

Results of High School and Higher Secondary Examinations

2009



GOVERNMENT OF INDIA
MINISTRY OF HUMAN RESOURCE DEVELOPMENT
BUREAU OF PLANNING, MONITORING & STATISTICS
NEW DELHI
2011

**RESULTS OF
HIGH SCHOOL AND
HIGHER SECONDARY
EXAMINATIONS**

2009



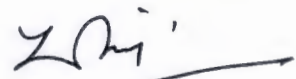
**Government of India
Ministry of Human Resource Development
Bureau of Planning, Monitoring & Statistics
Statistics Division
2011**

PREFACE

Examination is an important tool of assessing the progress made by students in their academic journey. Analyzing examination results statistically helps to understand the academic input by the teachers and the quantum of its receptivity by the students. It is also useful in order to estimate the availability of manpower and for assessing the demand for higher education in the country as well as catering to the needs of different organizations, educational planners and research scholars. Hence, the Ministry of Human Resource Development lays great emphasis in analyzing the board examination results.

This publication contains important statistics of examination results of the High School and Higher Secondary/Intermediate/Pre-University Examinations conducted by the various Boards in the country. I take this opportunity to place on record the co-operation received from the offices of State and Central Boards of Secondary, Higher Secondary and Intermediate/Pre-University Education, National Institute of Open Schooling, State Open Schools who have supplied the required data in time for bringing out this publication. I also express my appreciation of the work done by the Project Staff of the Statistics Bureau in bringing out this publication.

It is our constant endeavour to improve the coverage of this publication as well as its presentation based on the feedback from its users. Suggestions for improving the publication are always welcome and may be sent to us.



Dr. Vijay P. Goel
Deputy Director General
Ministry of Human Resource Development

New Delhi
Dated: 30.12.2011

PROJECT STAFF

Sanjay	Director
Chander Kant	Joint Director
Ruchika Gupta	Deputy Director
Lakhan Singh	Deputy Director
Vinit Kumar	Assistant Director
M.C.Shukla	Assistant Director
J.P.Gupta	Senior Statistical Officer
R.U.Choudhary	Senior Statistical Officer

Contents

Sl. No .	Subject	Page No.
I	AN OVERVIEW	1-15
a	<i>Introduction</i>	1-2
b	<i>Results of High School Examination</i>	3-8
	<i>Regular Boards</i>	3
	<i>Open Boards</i>	4
	<i>Trends during 2005-2009</i>	4
	<i>Board-wise Analysis</i>	7
	<i>Structure of the Tables</i>	8
	<i>Performance of SC and ST students</i>	8
	<i>Chart 1 - Number of students appeared and passed in 2009</i>	3
	<i>Chart 2 - Pass percentage among Boys and Girls in 2009</i>	4
	<i>Chart 3 - Number of students appeared and passed during 2005-09</i>	5
	<i>Chart 4 - Category-wise no. of students appeared and passed during 2005-09</i>	5
	<i>Chart 5 - Sex-wise no. of students appeared & passed during 2005-09</i>	6
	<i>Chart 6 - Category-wise pass percentage during 2005-09</i>	6
	<i>Chart 7 - Sex-wise pass percentage during 2005-09</i>	6
	<i>Chart 8 - Board-wise pass percentage in 2009</i>	7
c	<i>Results of Higher Secondary Examination</i>	9-15
	<i>Regular Boards</i>	9
	<i>Open Boards</i>	10
	<i>Trends during 2005-2009</i>	10
	<i>Students' Flow</i>	12
	<i>Board-wise Analysis</i>	14
	<i>Structure of the Tables</i>	15
	<i>Performance of SC and ST students</i>	15
	<i>Chart 1 - Number of students appeared and passed in 2009</i>	9
	<i>Chart 2 - Pass percentage among Boys and Girls in 2009</i>	10
	<i>Chart 3 - Number of students appeared and passed during 2005-09</i>	11
	<i>Chart 4 - Category-wise no. of students appeared and passed during 2005-09</i>	11
	<i>Chart 5 - Sex-wise no. of students appeared & passed during 2005-09</i>	11
	<i>Chart 6 - Category-wise pass percentage during 2005-09</i>	12
	<i>Chart 7 - Sex-wise pass percentage during 2005-09</i>	12
	<i>Chart 8 - Students' flow during 2005-07, 2006-07 and 2007-09</i>	13
	<i>Chart 9 - Students' flow during 2007-2009 for boys and girls</i>	13
	<i>Chart10 - Board-wise pass percentage in 2009</i>	14

Sl. No .	Subject	Page No.
II TABLES (High School Examination)		
1	Annual and Supplementary Examination Results -Regular Students-All categories	X- 1
2	Annual and Supplementary Examination Results -Private Students-All categories	X- 4
3	Annual and Supplementary Examination Results -Regular +Private Students-All categories	X- 7
4	Annual and Supplementary Examination Results -Regular SC Students	X-10
5	Annual and Supplementary Examination Results -Private SC Students	X-13
6	Annual and Supplementary Examination Results -Regular+ Private SC Students	X-16
7	Annual and Supplementary Examination Results -Regular ST Students	X-19
8	Annual and Supplementary Examination Results -Private ST Students	X-22
9	Annual and Supplementary Examination Results -Regular +Private ST Students	X-25
10	Annual and Supplementary Examination Results -Percentage wise -All Categories	X-28
11	Annual and Supplementary Examination Results -Percentage wise-SC Students	X-31
12	Annual and Supplementary Examination Results -Percentage wise ST Students	X-34
13	High School Open Examination Board Results	X-37
14	High School Open Examination Board Results-Percentage wise -All Categories	X-38
15	High School Open Examination Board Results-Percentage wise -SC Students	X-39
16	High School Open Examination Board Results-Percentage wise-ST Students	X-40
STATEMENTS (High School Examination)		
1	High School Examination Results during 2005-09	X-41
2	High School Examination Pass percentage during 2005-2009	X-42
III TABLES (Higher Secondary School Examination)		
1	Annual and Supplementary Examination Results -Regular Students-All categories	XII- 1
2	Annual and Supplementary Examination Results -Private Students-All categories	XII- 4
3	Annual and Supplementary Examination Results -Regular +Private Students-All categories	XII- 7
4	Annual and Supplementary Examination Results -Regular SC Students	XII-10
5	Annual and Supplementary Examination Results -Private SC Students	XII-13
6	Annual and Supplementary Examination Results -Regular+ Private SC Students	XII-16
7	Annual and Supplementary Examination Results -Regular ST Students	XII-19
8	Annual and Supplementary Examination Results -Private ST Students	XII-22
9	Annual and Supplementary Examination Results -Regular +Private ST Students	XII-25
10	Annual and Supplementary Examination Results -Percentage wise -All Categories	XII-28
11	Annual and Supplementary Examination Results -Percentage wise-SC Students	XII-31
12	Annual and Supplementary Examination Results -Percentage wise ST Students	XII-34
13	Higher Secondary Open School Examination Board Results	XII-37
14	Higher Secondary Open Examination Board Results-Percentage wise -All Categories	XII-38
15	Higher Secondary Open Examination Board Results-Percentage wise-SC Students	XII-39
16	Higher Secondary Open Examination Board Results-Percentage wise -ST Students	XII-40
STATEMENTS (Higher Secondary Examination)		
1	Higher Secondary Examination Results during 2005-09	XII-41
2	Higher Secondary Examination Pass Percentage during 2005-2009	XII-42
3	Students movement from class X onwards	XII-43

PART - I

RESULTS OF HIGH SCHOOL & HIGHER SECONDARY EXAMINATIONS (An Overview)

AN OVERVIEW

(a) INTRODUCTION

Examination means the test of a student's knowledge in prescribed subjects. Various Examination Boards have been established in the country for holding and conducting an examination at the end of Class X, the Secondary School stage and XII, the Senior Secondary School stage. These boards also prescribe conditions of examinations including course of studies for such examination.

Normally every year these Boards conduct Annual Examination in the month of February/March. Some of the Boards also conduct Supplementary Examination in the month of August/September on the basis of course/syllabus as prescribed by the Government.

The Examination results have assumed high importance for enabling students to enter job markets as well as for pursuing higher education. The result at the end of class XII is all the more significant as this leads students to enter tertiary level of education, including academic and professional courses of the university level.

It is of vital importance to compile the results of Secondary and Senior Secondary examinations conducted by various boards. Properly and systematically analyzed data on Examination results not only measure the efficacy of the educational system, it also indicates the flow of students from school level to higher education and job market.

The Results of Secondary and Higher Secondary/Intermediate Examinations conducted by Boards across the country have been analyzed in this publication. The data contained in this publication have been collected from the Boards in the country.

Open School Examination Boards

There were 14 open Boards across the country in the year 2009 and out of them only 5 conducted Class XII examinations and 6 conducted Class X examinations separately. Rest of the Boards did not conduct separate examination and their students appeared through the respective State Boards. In the table the name of the Open Boards with details are listed.

Unlike regular Boards, examination is conducted twice in a year during the month of March-May and September-November in Open Boards. In Open Schools, system of examination is different from other State and Central Boards. They provide a flexible scheme of examination by giving an opportunity to appear in one, two or more subjects

and credits are accumulated till the certification criteria is fulfilled. A candidate can avail number of chances as prescribed by the board to appear in public examinations spread over a period of more than one year unlike a time span of one year for other boards. There is no bifurcation of regular and private students and also no system of supplementary examination in Open Boards. It is, not reasonable to compare the pass-percentage of Open Board system with that of other State/ Central Boards as the number of appearing students includes all the students appearing in the examination whether appearing for one or more subjects, while number of passed students includes only those students who get certification i.e. passed in all the subjects. Keeping this in view, pass percentages have not been calculated for Open Boards.

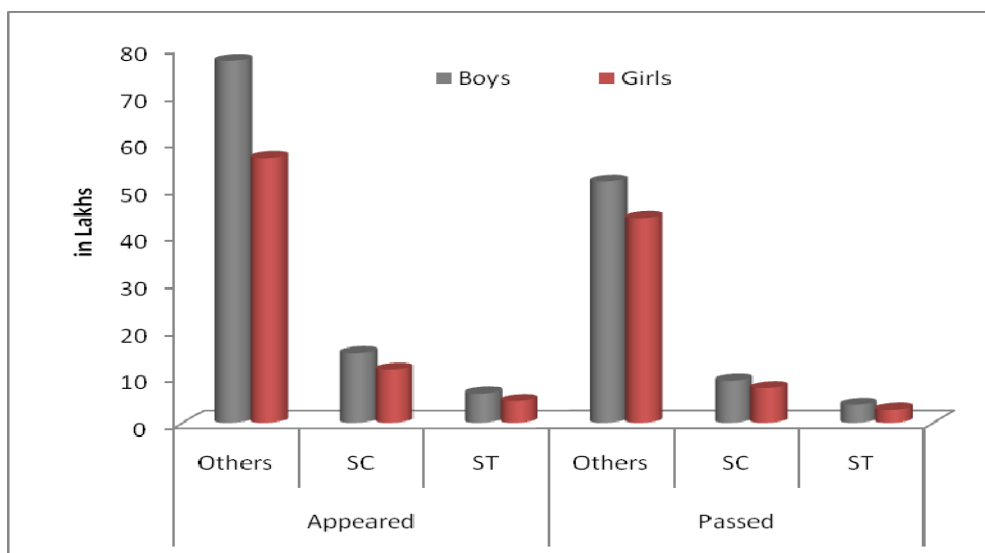
List of Open Boards

Sl. No.	Name of the Open Board	Secondary	Senior Secondary
1	Andhra Pradesh open school society	Data Presented Separately	Not yet Started conducting Examination
2	Chhattisgarh State Open School	Data Presented Separately	Data Presented Separately
3	Delhi State Open School (Patrachar Vidyalaya)	Data included in State board	Data included in State board
4	Haryana Open School	Data included in State board	Data included in State board
5	J.K. Open School, Jammu & Kashmir	Doesn't conduct Examination	Doesn't conduct Examination
6	JSS Karnataka Open School	Data included in State board	Data included in State board
7	Kerala State Open School	Data included in State board	Data included in State board
8	MP State Open School, Madhya Pradesh	Data Presented Separately	Data Presented Separately
9	National Institute of Open school New Delhi	Data Presented Separately	Data Presented Separately
10	Punjab Open School	Data included in State board	Data included in State board
11	Rajasthan State Open school	Data Presented Separately	Data Presented Separately
12	Tamil Nadu State Open School	Data included in State board	Data included in State board
13	U.P. State Open School, Uttar Pradesh	Data included in State board	Data included in State board
14	Rabindra Mukta Vidyalaya (West Bengal State Open School), West Bengal	Data Presented Separately	Data Presented Separately

(b) Class X/ Secondary/ High School - 2009

During 2009, 118.20 lakhs (Boys-64.28 lakhs and Girls-53.91 lakhs) students have completed Class X through various State & Central Examination Boards including Open Boards. Out of this, 2.14 lakhs students passed through Open School Examination Boards. It shows that students passed through open boards constitute only 1.8% of total pass out of class X. As regards to Scheduled Caste and Scheduled Tribes Students, number of pass out is 16.40 lakhs (Boys-8.99 lakhs and Girls-7.41 lakhs) and 6.61 lakhs (Boys-3.81 lakhs and Girls-2.80 lakhs) respectively. In 2009, for boys and girls number of students appeared and passed, for All categories, SC and ST during are shown in Chart 1 below.

Chart 1 – Number of students appeared and passed in 2009



Regular Boards

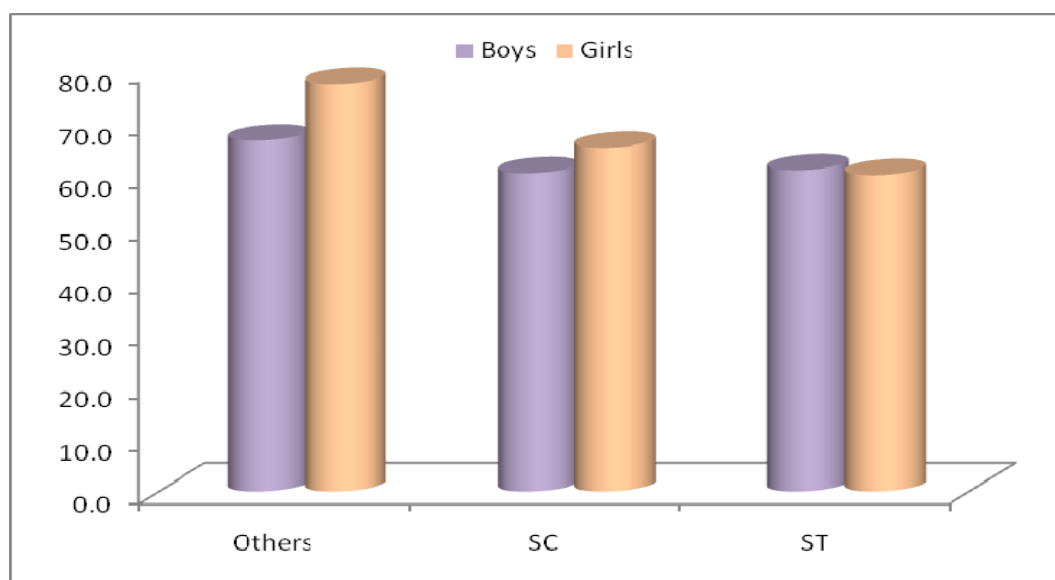
During the year 2009, as many as 160.50 lakhs students (Boys-89.91 lakhs and Girls-70.60 lakhs) appeared in the Secondary Examination. Out of this, 143.73 lakhs students appeared as Regular candidates and 16.78 lakhs appeared as Private Candidates. Out of those appeared, 116.06 lakhs students (Boys-62.98 lakhs and Girls-53.09 lakhs) passed. Thus out of those appeared in the Class X examination conducted by Regular Boards, 72.3% of students (Boys-70.0% and Girls-75.2%) have successfully completed class X. Pass percentage in respect of Regular candidates is 73.9% (Boys-71.8% and Girls-76.6%) while for private candidates pass percentage is only 58.6% (Boys-56.2% and Girls-62.2%). Pass percentage for Scheduled Caste Students is 63.3% (Boys-61.3% and Girls-65.8%) and for Scheduled Tribes Students, it is 61.8% (Boys-62.1% and Girls-61.3%). However, in comparison to boys, pass percentage among girls are higher in respect of others and SC category as shown in Chart 2.

Open Boards

10.39 lakhs students (Boys-8.47 lakhs and Girls-1.93 lakhs) have appeared in class X examination through Open School Examination Boards, out of which 2.14 lakhs students (Boys-1.31 lakhs and Girls-0.83 lakhs) got certification i.e. completed class X. Out of the total class X pass out through Open School Examination Boards, 0.28 lakhs students (Boys-0.18 lakhs and Girls-0.10 lakhs) belongs to Scheduled Caste category and 0.24 lakhs students (Boys 0.13 lakhs and Girls-0.11 lakhs) belongs to Scheduled Tribe category.

Total sex-wise number of students appeared and passed, for All categories, SC and ST during 2005 to 2009 have been given in Statement-1 and pass percentages are given in Statement-2. In comparison to boys, pass percentage among girls are higher in respect of others and SC category as shown in Chart 2 given below.

Chart 2 – Pass percentages among Boys and Girls in 2009



Trends during 2005-2009

Total sex-wise number of students appeared and passed, for All categories, SC and ST during 2005 to 2009 have been given in Statement-1. Total number of students appeared and passed during last 5 years has grown gradually. However, the pass percentages for General and SC categories have increased only marginally. For ST category it has increased from 48% to 61%. These are shown in various charts drawn below:

Chart 3 – Number of Students appeared and passed during 2005-2009

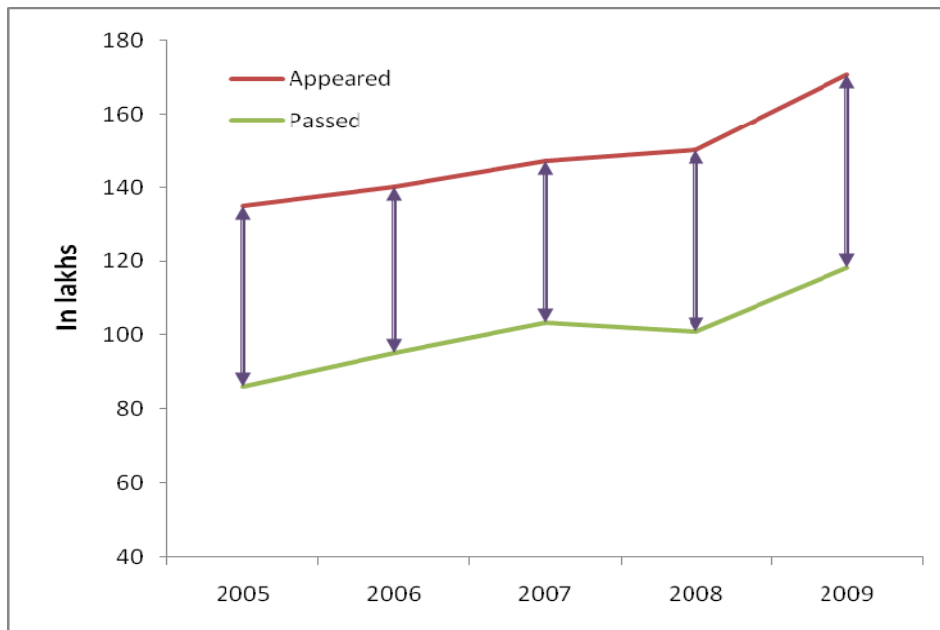


Chart 4 – Category-wise number of Students appeared and passed during 2005-2009

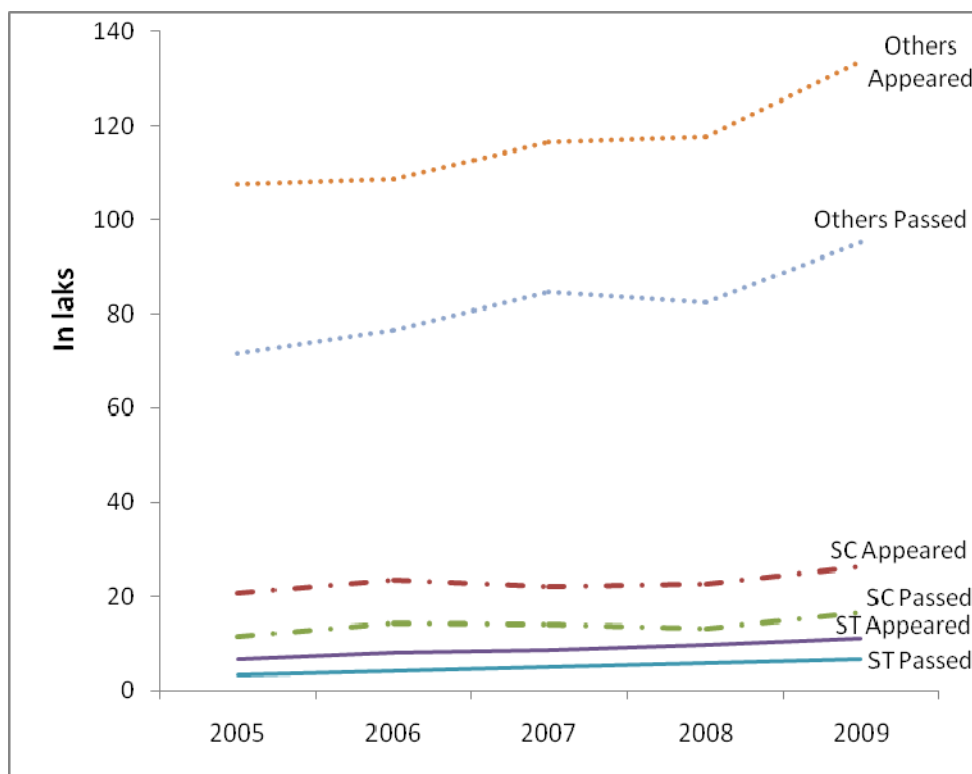


Chart 5 - Sex-wise number of Students appeared and passed during 2005-2009

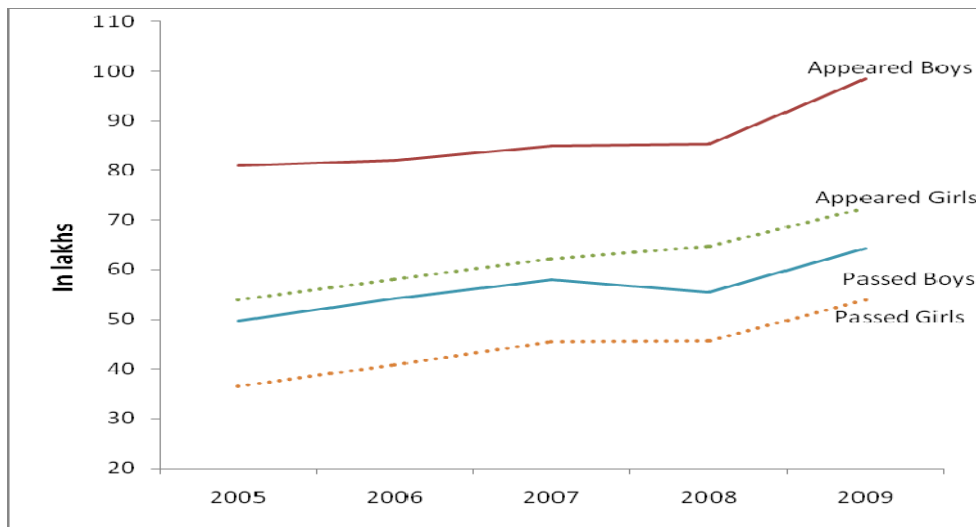


Chart 6 - Category-wise pass percentage during 2005-2009

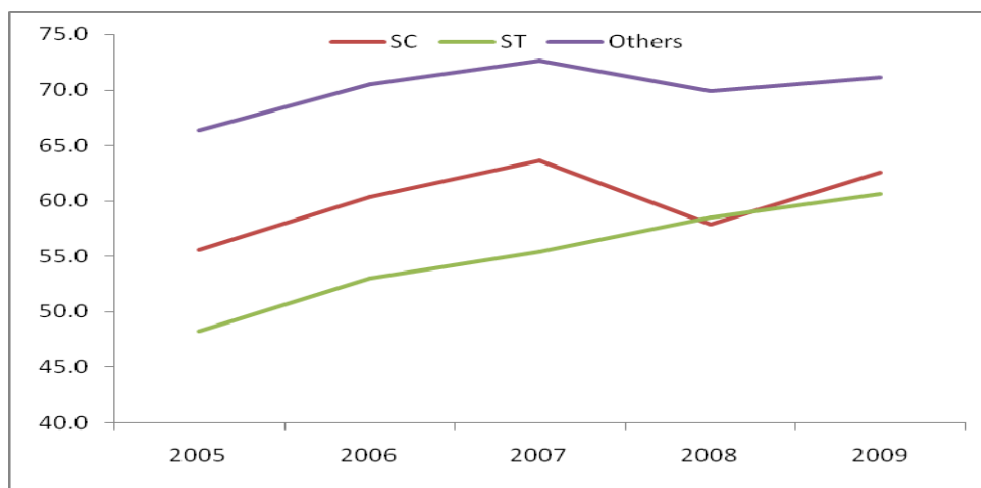
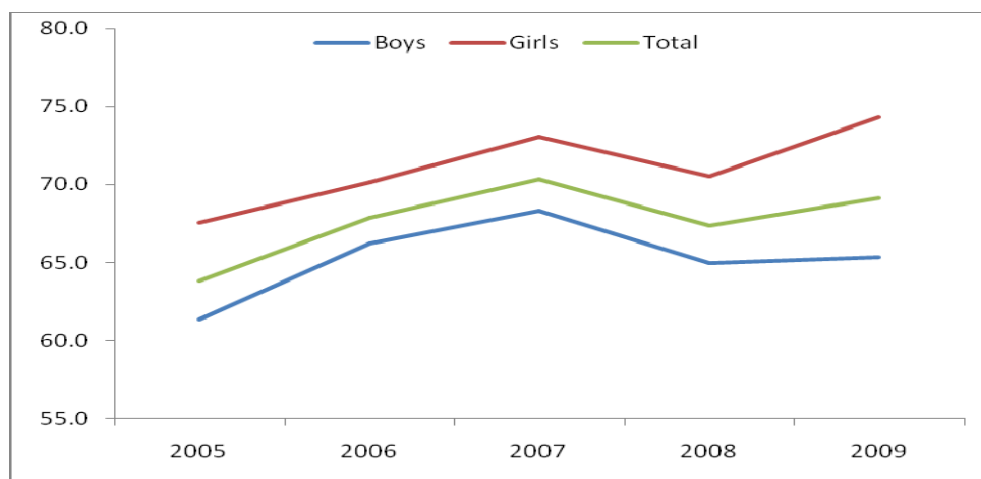


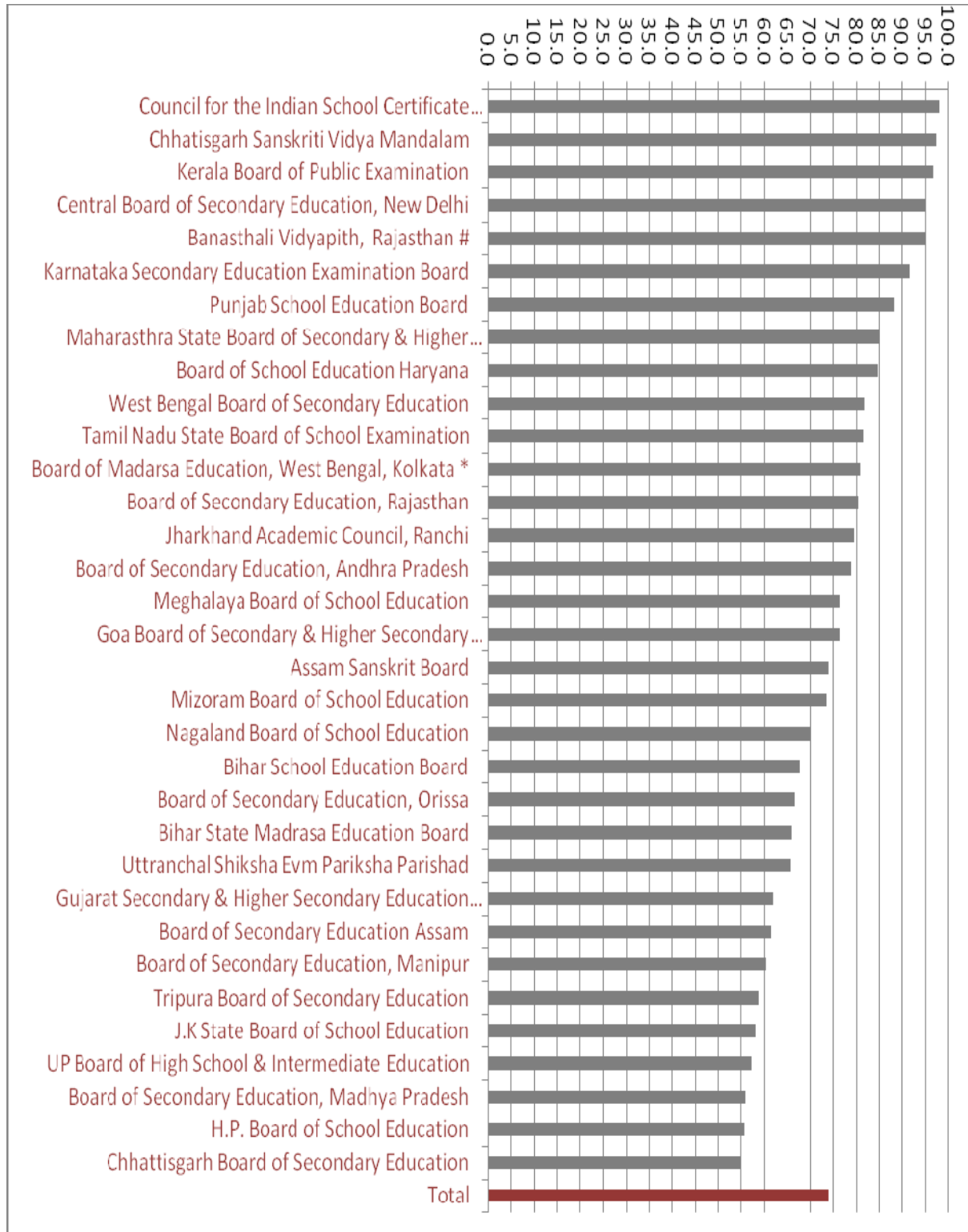
Chart 7 - Sex-wise pass percentage during 2005-2009



Board-wise Analysis:

Pass percentage among regular students varies from 55% to 98% among students appearing in examination through various regular boards. These have been shown in Chart - 8. In 18 boards the pass percentages are above average pass percentage.

Chart 8 – Board-wise pass percentage in 2009



Structure of the Tables

For two central boards and 32 state boards, number of students appeared, number of students passed and the pass percentage are given in the Table 1 and 2 for Regular and Private Students respectively. For Scheduled Caste Students these details are given in Table 4 and 5 and for Scheduled Tribe Students in Table 7 and 8. In Tables 3, 6 and 9, number of students appeared, number of students passed and the pass percentage for total of Regular and Private Students for All Categories, SC and ST students respectively are given. These figures are given for boys and girls separately. For Annual and Supplementary Examinations, number of students passed and the pass percentage are given separately.

Percentage-wise examination results have also been compiled and shown in Table 10, 11 and 12. Number of students have been categorised into three classes on the basis of percentages of marks scored in the examination. The classes are “60% & above”, “50% to below 60%” and “Below 50%”. For some Examination Boards, distribution of students in these classes is not available as mentioned in the table. In case of J.K State Board of School Education these classes corresponds to “75% & above”, “55% to below 75%” and “Below 55%” and in case of Tripura Board of Secondary Education these classes corresponds to “60% & above”, “45% to below 60%” and “Below 45%”. It may be seen that percentages of students scoring more than 60% of marks of the total students passed varies from about 5.5% to 89% in different boards.

Data for Open School Examination Boards have been tabulated separately in Table 13, 14, 15 and 16, where number of students appeared, number of students passed, pass percentages and Percentage-wise examination results are given for open boards.

Performance of SC and ST students

Out of total students appeared through regular boards, 15.9 % (Boys-16% and Girls-15.7%) of students were from **SC category**, whereas out of total students passed only 13.9 % (Boys-14.0% and Girls-13.8%) of students were from SC category. Out of total students appeared, 6.4 % (Boys-6.6% and Girls-6.2%) of students were from **ST category**, whereas out of total students passed only 5.5 % (Boys-5.8% and Girls-5.1%) of students were from ST category. J.K State Board of School Education does not maintain data separately for SC & ST categories.

(c) Class XII/ Higher Secondary/ Intermediate/Pre-University Examination - 2009

During 2009, 80.45 lakhs (Boys-44.67 lakhs and Girls-35.78 lakhs) students have completed Class XII through various State & Central Examination Boards including Open Boards. Out of this, 1.55 lakhs students passed through Open School Examination Boards. It shows that students passed through open boards constitute only 1.9% of total pass out of class XII. As regards to Scheduled Caste and Scheduled Tribes Students, number of pass-outs is 10.17 lakhs (Boys-5.76 lakhs and Girls-4.41 lakhs) and 3.58 lakhs (Boys-2.12 lakhs and Girls-1.46 lakhs) respectively. In 2009, for boys and girls number of students appeared and passed, for All categories, SC and ST during are shown in Chart 1 below.

Chart 1 - Number of students appeared and passed in 2009



Regular Boards

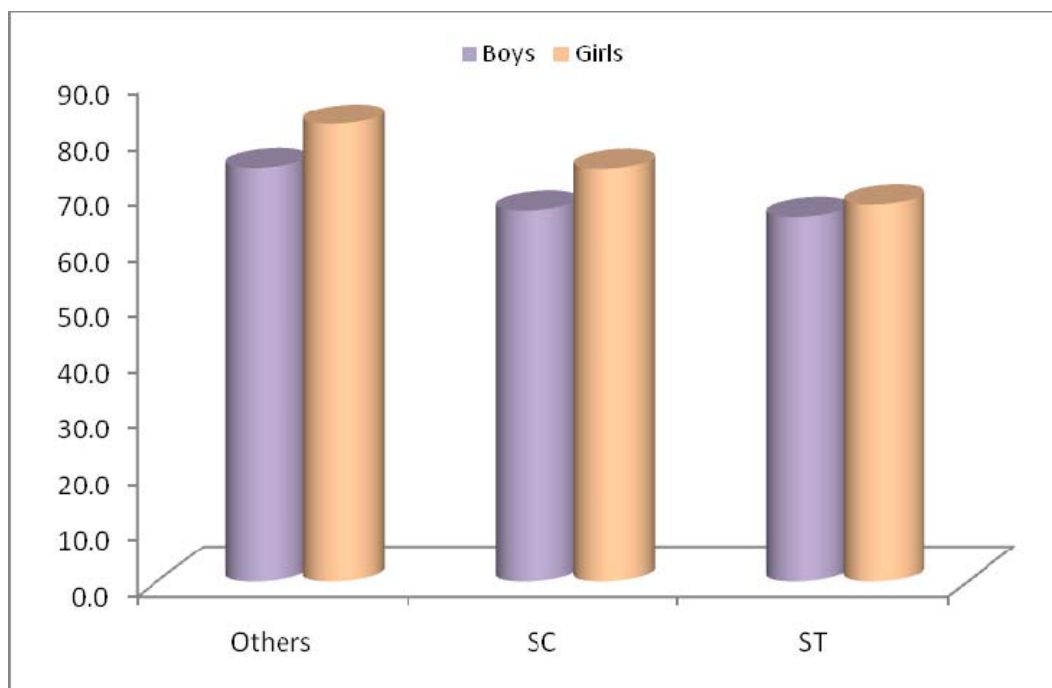
During the year 2009, as many as 101.76 lakhs students (Boys-58.59 lakhs and Girls-43.17 lakhs) appeared in the Higher Secondary Examination. Out of this, 92.10 lakhs students appeared as Regular candidates and 9.66 lakhs appeared as Private Candidates. Out of those appeared, 78.90 lakhs students (Boys-43.67 lakhs and Girls-35.23 lakhs) passed. Thus out of those appeared in the Class XII examination conducted by Regular Boards, 77.5% of students (Boys-74.5% and Girls-81.6%) have successfully completed Class XII. Pass percentage in respect of Regular candidates is 78.5% (Boys-75.9% and Girls-81.9%) while for private candidates pass percentage is only 68.1% (Boys-62.6% and Girls-78.0%). Pass percentage for Scheduled Caste Students is 70.5% (Boys-67.6% and Girls-74.7%) and for Scheduled Tribes Students, it is 67.4% (Boys-66.3% and Girls-69%).

Open Boards

3.76 lakhs students (Boys-2.58 lakhs and Girls-1.18 lakhs) have appeared in Class XII examination through Open School Examination Boards, out of which 1.55 lakhs students (Boys-1 lakhs and Girls-0.55 lakhs) got certification i.e. completed class XII. Out of the total class XII pass-outs through Open School Examination Boards, 0.17 lakhs students (Boys-0.11 lakhs and Girls-0.05 lakhs) belongs to Scheduled Caste category and 0.11 lakhs students (Boys 0.06 lakhs and Girls-0.05 lakhs) belongs to Scheduled Tribe category.

Total sex-wise number of students appeared and passed, for All categories, SC and ST during 2005 to 2009 have been given in Statement-1 and pass percentages are given in Statement-2. In comparison to boys, pass percentage among girls are higher in respect of others and SC & ST also as shown in Chart 2 given below.

Chart 2 - Pass percentages among Boys and Girls in 2009



Trends during 2005-2009

Total number of students appeared and passed during last 5 years has grown gradually. However, the pass percentages for different categories have increased only marginally. These are shown in various charts drawn below:

Chart 3 – Number of Students appeared and passed during 2005-2009

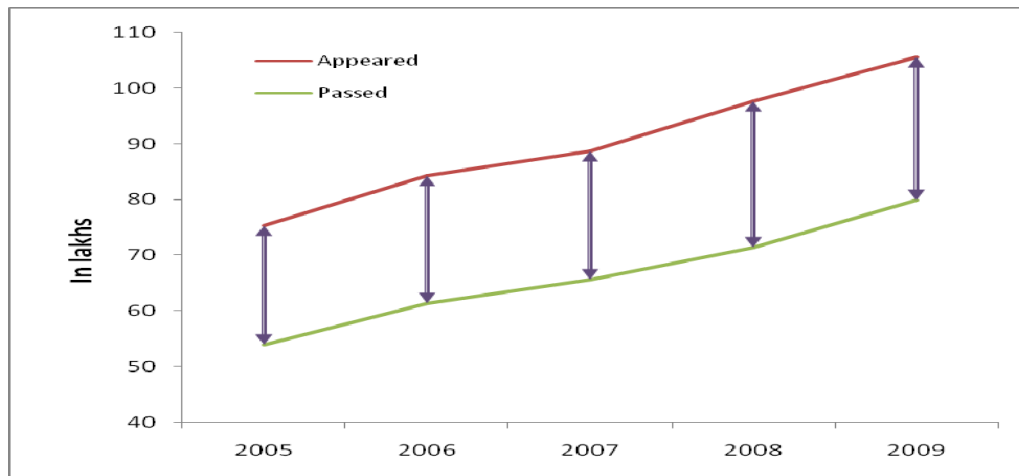


Chart 4 – Category-wise number of Students appeared and passed during 2005-2009

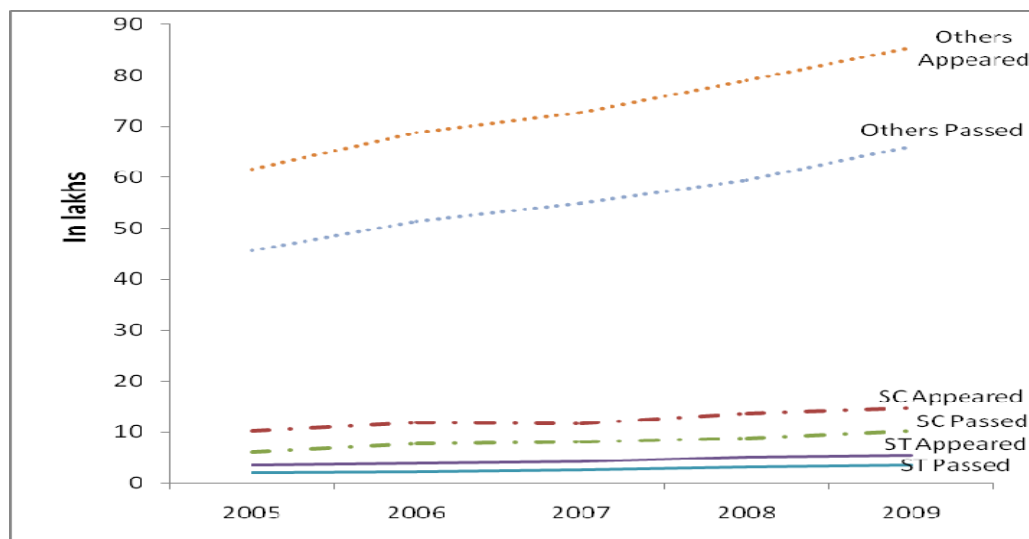


Chart 5 – Sex-wise number of Students appeared and passed during 2005-2009

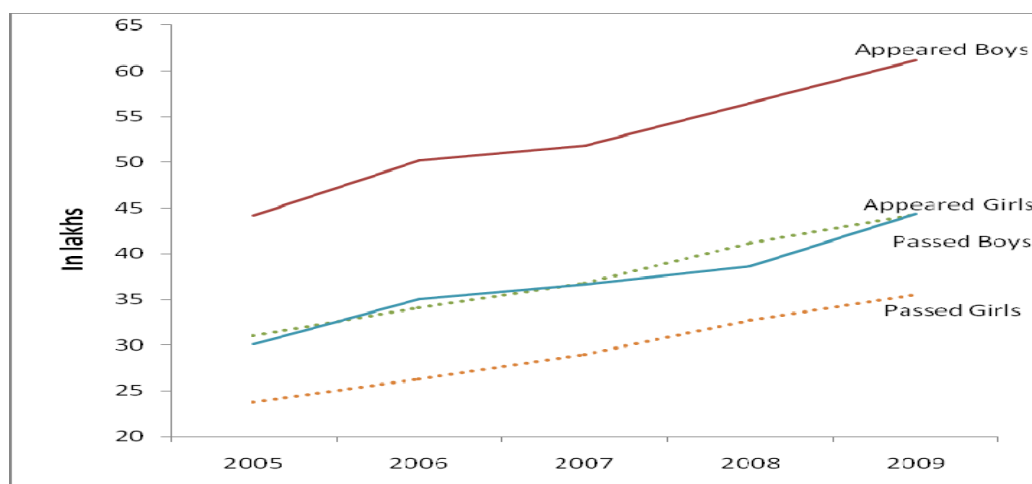


Chart 6 – Category-wise pass percentage during 2005-2009

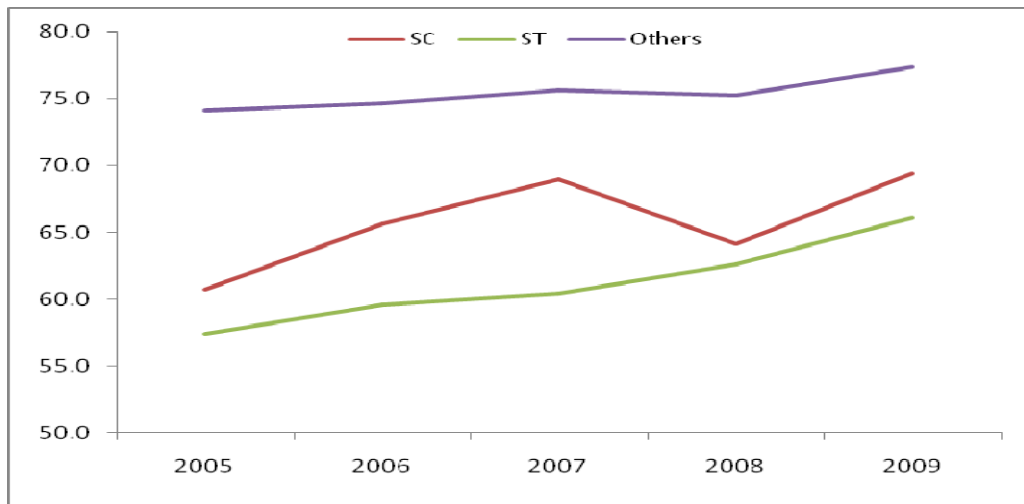
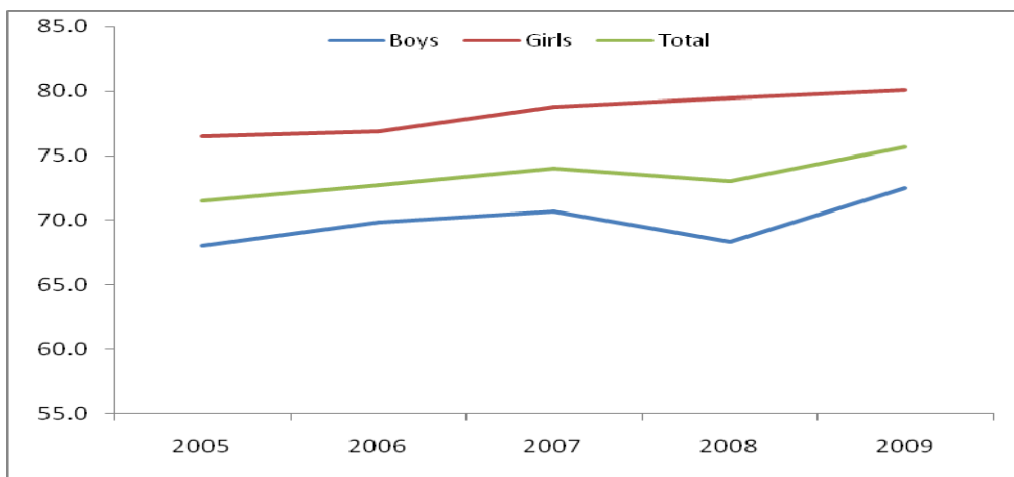


Chart 7 – Sex-wise pass percentage during 2005-2009



Students' Flow

Students' flow has been described here as its movement from Class X to passing out of Class XII. In the year 2009, the students, which have appeared and passed out from Class XII, were from among those students who were enrolled in Class XII in the year 2008. The students' enrolment has been taken from the publication, "Statistics on School Education". The students on roll as on 30th September of the year are taken as Students' enrolment during the year. The students, who have taken admission in Class XI in 2007, were from among the students who passed Class X examination in the year 2007. Excluding the drop-out, these students might have continued study in Class XII in the year 2008 and have been counted in enrolment in Class XII in the year 2008. Thus the chart depicts the rate of decline in movement of students towards higher education. The five stages, Number of students Passed in High School Examination, Enrolled in Class XI, Enrolled in Class XII, Appeared in Higher Secondary Examination and Passed in Higher Secondary Examination are shown in

the chart given below. In Chart 8, three lines depict the movement during years 2005-2007, 2006-2008 and 2007-2009. In Chart 9, two lines depict the movement of boys and girls during 2007-2009.

There are significant numbers of students, who do not go to formal schooling, but attempt to qualify by appearing in Class XII examination as is evident from the fact that the number of students appearing in Class XII in 2009 was more than the number of students passing out from Class X in 2007. Please see Statement -3.

Chart 8 – Students’ flow during 2005-2007, 2006-2008 and 2007-2009

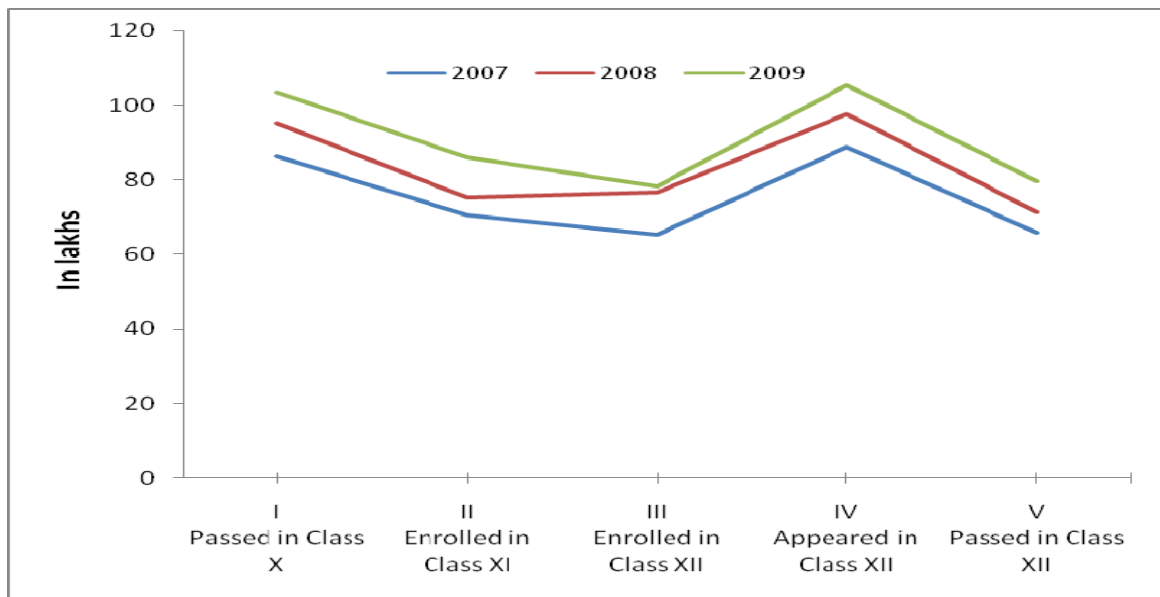
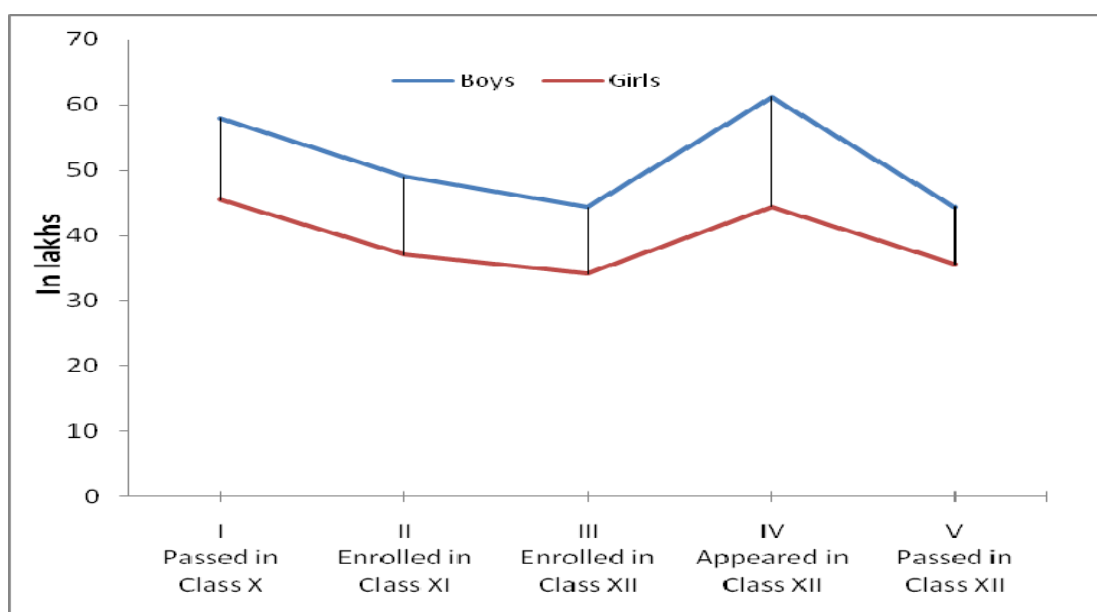


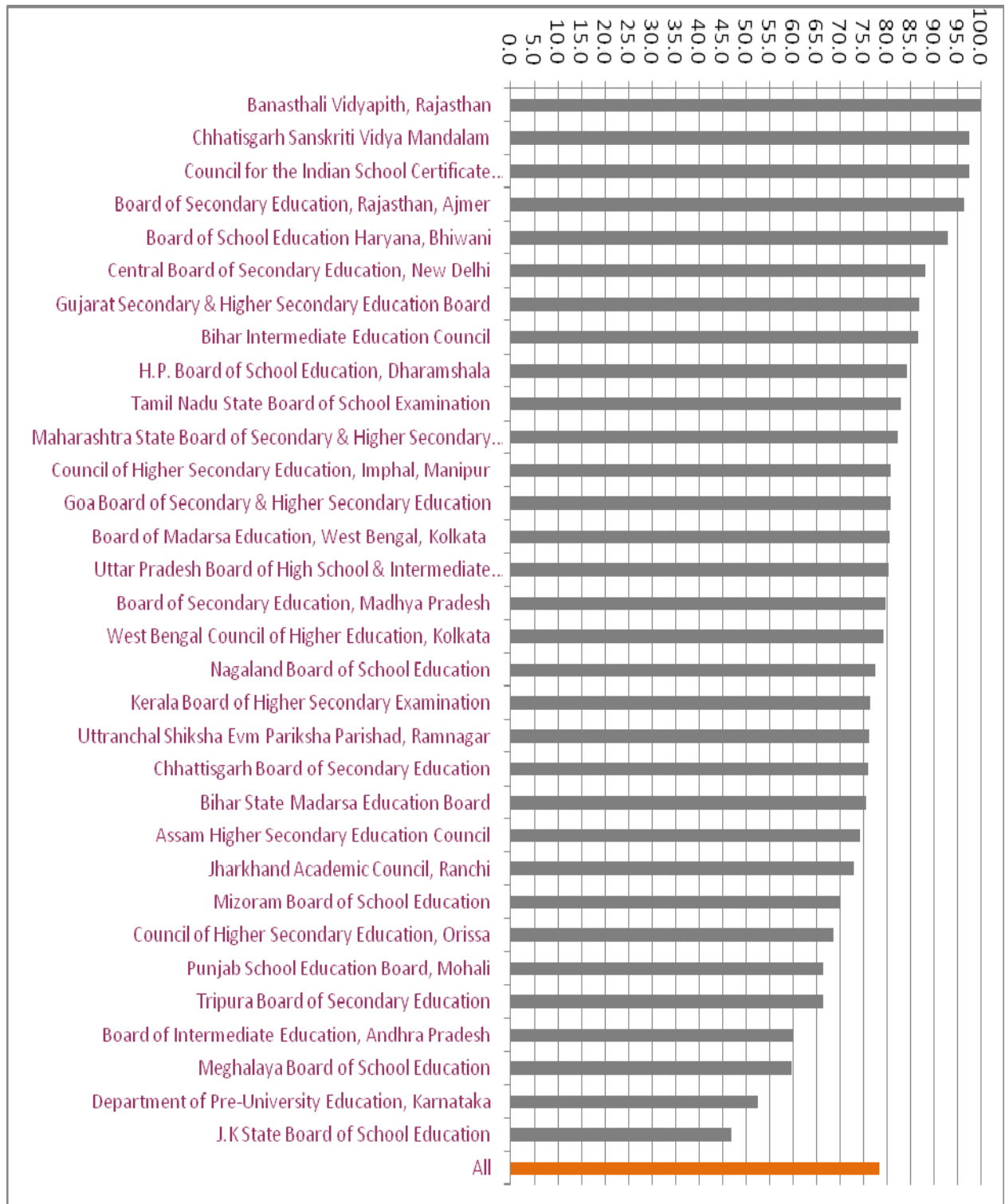
Chart 9 – Students’ flow during 2007-2009 for boys and girls



Board-wise Analysis

Pass percentage among regular students varies from 47% to 100% among students appearing in examination through various boards. These have been shown in Chart - 10. In 17 boards the pass percentages are above average pass percentage.

Chart 10 – Board-wise pass percentage in 2009



Structure of the Tables

For two Central Boards and 31 State Boards, number of students appeared, number of students passed and the pass percentage are given in the Table – 1 and 2 for Regular and Private Students respectively. For Scheduled Caste these details are given in Table 4 and 5 and for Scheduled Tribe Students in Table 7 and 8. In Tables 3, 6 and 9, number of students appeared, number of students passed and the pass percentage for total of Regular and Private Students for All Categories, SC and ST students respectively are given. These figures are given for boys and girls separately. For Annual and Supplementary Examinations, number of students passed and the pass percentage are given separately.

Percentage-wise examination results has also been compiled and shown in Table 10, 11 and 12. Number of students have been categorised into three classes on the basis of percentages of marks scored in the examination. The classes are “60% & above”, “50% to below 60%” and “Below 50%”. For some Examination Boards, distribution of students in these classes is not available as mentioned in the table. In case of J.K State Board of School Education these classes corresponds to “60% & above”, “48% to below 60%” and “Below 45%” and in case of Assam Higher Secondary Education Council, West Bengal Council of Higher Education, Kolkata and Tripura Board of Secondary Education these classes corresponds to “60% & above”, “45% to below 60%” and “Below 45%”. It may be seen that percentages of students scoring more than 60% of marks of the total students passed varies from about 3% to 86% in different boards.

Data for Open School Examination Boards have been tabulated separately in Table 13, 14, 15 and 16, where number of students appeared, number of students passed, pass percentages and Percentage-wise examination results are given for open boards.

Performance of SC and ST students

Out of total students appeared through regular boards, 13.9 % (Boys-14.2% and Girls-13.5%) of students were from SC category, whereas out of total students passed only 12.8 % (Boys-13.0% and Girls-12.5%) of students were from SC category. Out of total students appeared, 5.1 % (Boys-5.3% and Girls-4.7%) of students were from ST category, whereas out of total students passed only 4.4 % (Boys-4.8% and Girls-4.0%) of students were from ST category. Board of Madarsa Education, West Bengal, does not maintain data separately for SC & ST categories for Higher Secondary Examination.

PART - II

**RESULTS OF
HIGH SCHOOL
EXAMINATIONS**
(Tables & Statements)

RESULTS OF HIGH SCHOOL EXAMINATION- 2009

Table 1- Annual and Supplementary Examination Results - Regular Students - All Categories

Sl. No.	Name of the Board	Number of Students											Pass %age			
		Appeared			Passed											
					Annual			Supplementary			Annual + Supplementary					
		Boys	Girls	Total	Boys	Girls	Total	Boys	Girls	Total	Boys	Girls	Total	Boys	Girls	Total
1	2	3	4	5	6	7	8	9	10	11	12	13	14	15	16	17
Central Boards																
1	Central Board of Secondary Education, New Delhi	462038	323166	785204	412418	294829	707247	23130	15713	38843	435548	310542	746090	94.3	96.1	95.0
2	Council for the Indian School Certificate Examinations, New Delhi	60292	47190	107482	58885	46522	105407				58885	46522	105407	97.7	98.6	98.1
State Boards																
3	Board of Secondary Education, Andhra Pradesh	521117	480412	1001529	409481	379987	789468				409481	379987	789468	78.6	79.1	78.8
4	Board of Secondary Education Assam	118238	116503	234741	77088	67403	144491				77088	67403	144491	65.2	57.9	61.6
5	Assam Sanskrit Board	1603	1820	3423	1210	1325	2535				1210	1325	2535	75.5	72.8	74.1
6	Banasthali Vidyapith, Rajasthan #	16	162	178	16	150	166		3	3	16	153	169	100.0	94.4	94.9
7	Bihar School Education Board	483402	323411	806813	318287	196150	514437	15812	15643	31455	334099	211793	545892	69.1	65.5	67.7
8	Bihar State Madrasa Education Board	48286	70753	119039	31279	47201	78480				31279	47201	78480	64.8	66.7	65.9
9	Chhattisgarh Board of Secondary Education	156347	134840	291187	83954	74076	158030	1078	835	1913	85032	74911	159943	54.4	55.6	54.9
10	Chhatisgarh Madrasa Board															
11	Chhatisgarh Sanskriti Vidya Mandalam	139	60	199	130	53	183	7	4	11	137	57	194	98.6	95.0	97.5
12	Goa Board of Secondary & Higher Secondary Education	8544	8679	17223	6150	6243	12393	377	369	746	6527	6612	13139	76.4	76.2	76.3
13	Gujarat Secondary & Higher Secondary Education Board	472077	283360	755437	254430	175156	429586	24980	13605	38585	279410	188761	468171	59.2	66.6	62.0
14	Board of School Education Haryana	184640	143232	327872	155106	122964	278070				155106	122964	278070	84.0	85.8	84.8

RESULTS OF HIGH SCHOOL EXAMINATION- 2009

Table 1- Annual and Supplementary Examination Results - Regular Students - All Categories

Sl. No.	Name of the Board	Number of Students											Pass %age			
		Appeared			Passed											
					Annual			Supplementary			Annual + Supplementary					
		Boys	Girls	Total	Boys	Girls	Total	Boys	Girls	Total	Boys	Girls	Total	Boys	Girls	Total
1	2	3	4	5	6	7	8	9	10	11	12	13	14	15	16	17
15	H.P. Board of School Education	58285	50311	108596	32318	28229	60547				32318	28229	60547	55.4	56.1	55.8
16	J.K State Board of School Education	54537	43290	97827	32452	24288	56740				32452	24288	56740	59.5	56.1	58.0
17	Jharkhand Academic Council, Ranchi	136897	104343	241240	111669	80055	191724	204	151	355	111873	80206	192079	81.7	76.9	79.6
18	Karnataka Secondary Education Examination Board	379470	355190	734660	282629	274638	557267	66570	48643	115213	349199	323281	672480	92.0	91.0	91.5
19	Kerala Board of Public Examination	221018	225536	446554	198351	211997	410348	13638	7850	21488	211989	219847	431836	95.9	97.5	96.7
20	Maharashtra State Board of Secondary & Higher Secondary Education	830236	680198	1510434	673957	566490	1240447	27766	16863	44629	701723	583353	1285076	84.5	85.8	85.1
21	Board of Secondary Education, Madhya Pradesh	394121	264644	658765	134078	98302	232380	78132	58033	136165	212210	156335	368545	53.8	59.1	55.9
22	Board of Secondary Education, Manipur	12359	11886	24245	8190	6456	14646				8190	6456	14646	66.3	54.3	60.4
23	Meghalaya Board of School Education	7012	7651	14663	5513	5674	11187				5513	5674	11187	78.6	74.2	76.3
24	Mizoram Board of School Education	4447	4695	9142	3385	3334	6719				3385	3334	6719	76.1	71.0	73.5
25	Nagaland Board of School Education	7336	7218	14554	5315	4870	10185				5315	4870	10185	72.5	67.5	70.0
26	Board of Secondary Education, Orissa	178550	164343	342893	114467	99820	214287	7692	6560	14252	122159	106380	228539	68.4	64.7	66.7
27	Punjab School Education Board	125040	109433	234473	108440	98622	207062				108440	98622	207062	86.7	90.1	88.3
28	Board of Secondary Education, Rajasthan	583429	320462	903891	451561	254096	705657	12433	7989	20422	463994	262085	726079	79.5	81.8	80.3
29	Tamil Nadu State Board of School Examination	404425	419088	823513	318170	353277	671447				318170	353277	671447	78.7	84.3	81.5

RESULTS OF HIGH SCHOOL EXAMINATION- 2009

Table 1- Annual and Supplementary Examination Results - Regular Students - All Categories

Sl. No.	Name of the Board	Number of Students											Pass %age			
		Appeared			Passed											
					Annual			Supplementary			Annual + Supplementary					
		Boys	Girls	Total	Boys	Girls	Total	Boys	Girls	Total	Boys	Girls	Total	Boys	Girls	Total
1	2	3	4	5	6	7	8	9	10	11	12	13	14	15	16	17
30	Tripura Board of Secondary Education	15312	12948	28260	9510	7066	16576				9510	7066	16576	62.1	54.6	58.7
31	UP Board of High School & Intermediate Education	1603300	1229905	2833205	785672	837522	1623194				785672	837522	1623194	49.0	68.1	57.3
32	Uttanchal Shiksha Evm Pariksha Parishad	81305	71059	152364	51363	48798	100161				51363	48798	100161	63.2	68.7	65.7
33	West Bengal Board of Secondary Education	366534	344503	711037	318252	262953	581205				318252	262953	581205	86.8	76.3	81.7
34	Board of Madarsa Education, West Bengal, Kolkata *	12342	19622	31964	9083	12158	21241	1690	2884	4574	10773	15042	25815	87.3	76.7	80.8
Total		7992694	6379913	14372607	5462809	4690704	10153513	273509	195145	468654	5736318	4885849	10622167	71.8	76.6	73.9

* Figures pertains to 'ALIM' and 'High Madarsa' as both are equivalent to High School Examination.

The Institute is mainly meant for Women, Boys enrolment pertains to wards of the staff.

RESULTS OF HIGH SCHOOL EXAMINATION- 2009

Table 2 -Annual and Supplementary Examination Results - Private Students - All Categories

Sl. No.	Name of the Board	Number of Students											Pass %age			
		Appeared			Passed											
		Boys	Girls	Total	Annual			Supplementary			Annual + Supplementary					
					Boys	Girls	Total	Boys	Girls	Total	Boys	Girls	Total	Boys	Girls	Total
1	2	3	4	5	6	7	8	9	10	11	12	13	14	15	16	17
Central Boards																
1	Central Board of Secondary Education, New Delhi	11461	8756	20217	5113	3169	8282	960	906	1866	6073	4075	10148	53.0	46.5	50.2
2	Council for the Indian School Certificate Examinations, New Delhi	62	9	71	46	9	55				46	9	55	74.2	100.0	77.5
State Boards																
3	Board of Secondary Education, Andhra Pradesh	227340	117397	344737	94169	58501	152670	67147	47910	115057	161316	106411	267727	71.0	90.6	77.7
4	Board of Secondary Education Assam	42918	49525	92443	22015	26864	48879				22015	26864	48879	51.3	54.2	52.9
5	Assam Sanskrit Board	600	720	1320	300	340	640				300	340	640	50.0	47.2	48.5
6	Banasthali Vidyapith, Rajasthan #															
7	Bihar School Education Board	56002	39051	95053	40459	26607	67066	689	786	1475	41148	27393	68541	73.5	70.1	72.1
8	Bihar State Madrasa Education Board															
9	Chhattisgarh Board of Secondary Education	3808	2787	6595	1424	1124	2548	30	29	59	1454	1153	2607	38.2	41.4	39.5
10	Chhattisgarh Madrasa Board	74	62	136	38	34	72	13	12	25	51	46	97	68.9	74.2	71.3
11	Chhattisgarh Sanskriti Vidya Mandalam	10	3	13	10	1	11		2	2	10	3	13	100.0	100.0	100.0
12	Goa Board of Secondary & Higher Secondary Education	4	1	5	1		1	1		1	2		2	50.0		40.0
13	Gujarat Secondary & Higher Secondary Education Board	9520	2951	12471	2925	1109	4034	1102	443	1545	4027	1552	5579	42.3	52.6	44.7
14	Board of School Education Haryana	12971	3246	16217	5898	1308	7206				5898	1308	7206	45.5	40.3	44.4

RESULTS OF HIGH SCHOOL EXAMINATION- 2009

Table 2 -Annual and Supplementary Examination Results - Private Students - All Categories

Sl. No.	Name of the Board	Number of Students											Pass %age			
		Appeared			Passed											
					Annual			Supplementary			Annual + Supplementary					
		Boys	Girls	Total	Boys	Girls	Total	Boys	Girls	Total	Boys	Girls	Total	Boys	Girls	Total
1	2	3	4	5	6	7	8	9	10	11	12	13	14	15	16	17
15	H.P. Board of School Education	15161	14989	30150	8312	6818	15130	8407	8174	16581	16719	14992	31711	110.3	100.0	105.2
16	J.K State Board of School Education	62421	62418	124839	12958	12955	25913	10879	10879	21758	23837	23834	47671	38.2	38.2	38.2
17	Jharkhand Academic Council, Ranchi	69268	44880	114148	52605	32401	85006	172	99	271	52777	32500	85277	76.2	72.4	74.7
18	Karnataka Secondary Education Examination Board	19608	5852	25460	2403	1381	3784	6279	1977	8256	8682	3358	12040	44.3	57.4	47.3
19	Kerala Board of Public Examination	4618	4173	8791	2683	2754	5437				2683	2754	5437	58.1	66.0	61.8
20	Maharashtra State Board of Secondary & Higher Secondary Education	34921	16354	51275	13461	6740	20201	2016	864	2880	15477	7604	23081	44.3	46.5	45.0
21	Board of Secondary Education, Madhya Pradesh	38151	18782	56933	3189	1867	5056	6058	3663	9721	9247	5530	14777	24.2	29.4	26.0
22	Board of Secondary Education, Manipur	1431	1847	3278	510	534	1044				510	534	1044	35.6	28.9	31.8
23	Meghalaya Board of School Education	10476	11219	21695	2781	3036	5817				2781	3036	5817	26.5	27.1	26.8
24	Mizoram Board of School Education	1797	1775	3572	519	449	968	145	166	311	664	615	1279	37.0	34.6	35.8
25	Nagaland Board of School Education	4	5	9	4	5	9				4	5	9	100.0	100.0	100.0
26	Board of Secondary Education, Orissa	22279	16461	38740	9193	6563	15756	2936	2089	5025	12129	8652	20781	54.4	52.6	53.6
27	Punjab School Education Board	48485	33242	81727	33249	27285	60534	14039	7892	21931	47288	35177	82465	97.5	105.8	100.9
28	Board of Secondary Education, Rajasthan	40110	30137	70247	3751	3216	6967	944	805	1749	4695	4021	8716	11.7	13.3	12.4
29	Tamil Nadu State Board of School Examination															

RESULTS OF HIGH SCHOOL EXAMINATION- 2009

Table 2 -Annual and Supplementary Examination Results - Private Students - All Categories

Sl. No.	Name of the Board	Number of Students											Pass %age			
		Appeared			Passed											
		Annual			Supplementary			Annual + Supplementary			Boys	Girls	Total			
		Boys	Girls	Total	Boys	Girls	Total	Boys	Girls	Total				Boys	Girls	Total
1	2	3	4	5	6	7	8	9	10	11	12	13	14	15	16	17
30	Tripura Board of Secondary Education	4929	4908	9837	1826	1739	3565				1826	1739	3565	37.0	35.4	36.2
31	UP Board of High School & Intermediate Education	185018	104466	289484	80673	65777	146450				80673	65777	146450	43.6	63.0	50.6
32	Uttanchal Shiksha Evm Pariksha Parishad	14502	6196	20698	5416	2521	7937				5416	2521	7937	37.3	40.7	38.3
33	West Bengal Board of Secondary Education	58174	73768	131942	32315	38731	71046				32315	38731	71046	55.5	52.5	53.8
34	Board of Madarsa Education, West Bengal, Kolkata *	1884	3643	5527	1147	2097	3244	24	41	65	1171	2138	3309	62.2	58.7	59.9
Total		998007	679623	1677630	439393	335935	775328	121841	86737	208578	561234	422672	983906	56.2	62.2	58.6

Blank row indicates that there is no provision of examination for private candidates in the Board.

RESULTS OF HIGH SCHOOL EXAMINATION- 2009

Table 3 -Annual and Supplementary Examination Results - Regular + Private Students - All Categories

Sl. No.	Name of the Board	Number of Students												Pass %age		
		Appeared			Passed											
		Boys	Girls	Total	Annual			Supplementary			Annual + Supplementary					
					Boys	Girls	Total	Boys	Girls	Total	Boys	Girls	Total	Boys	Girls	Total
1	2	3	4	5	6	7	8	9	10	11	12	13	14	15	16	17
Central Boards																
1	Central Board of Secondary Education, New Delhi	473499	331922	805421	417531	297998	715529	24090	16619	40709	441621	314617	756238	93.3	94.8	93.9
2	Council for the Indian School Certificate Examinations, New Delhi	60354	47199	107553	58931	46531	105462				58931	46531	105462	97.6	98.6	98.1
State Boards																
3	Board of Secondary Education, Andhra Pradesh	748457	597809	1346266	503650	438488	942138	67147	47910	115057	570797	486398	1057195	76.3	81.4	78.5
4	Board of Secondary Education Assam	161156	166028	327184	99103	94267	193370				99103	94267	193370	61.5	56.8	59.1
5	Assam Sanskrit Board	2203	2540	4743	1510	1665	3175				1510	1665	3175	68.5	65.6	66.9
6	Banasthali Vidyapith, Rajasthan #	16	162	178	16	150	166		3	3	16	153	169	100.0	94.4	94.9
7	Bihar School Education Board	539404	362462	901866	358746	222757	581503	16501	16429	32930	375247	239186	614433	69.6	66.0	68.1
8	Bihar State Madrasa Education Board	48286	70753	119039	31279	47201	78480				31279	47201	78480	64.8	66.7	65.9
9	Chhattisgarh Board of Secondary Education	160155	137627	297782	85378	75200	160578	1108	864	1972	86486	76064	162550	54.0	55.3	54.6
10	Chhattisgarh Madrasa Board	74	62	136	38	34	72	13	12	25	51	46	97	68.9	74.2	71.3
11	Chhattisgarh Sanskriti Vidya Mandalam	149	63	212	140	54	194	7	6	13	147	60	207	98.7	95.2	97.6
12	Goa Board of Secondary & Higher Secondary Education	8548	8680	17228	6151	6243	12394	378	369	747	6529	6612	13141	76.4	76.2	76.3
13	Gujarat Secondary & Higher Secondary Education Board	481597	286311	767908	257355	176265	433620	26082	14048	40130	283437	190313	473750	58.9	66.5	61.7
14	Board of School Education Haryana	197611	146478	344089	161004	124272	285276				161004	124272	285276	81.5	84.8	82.9

RESULTS OF HIGH SCHOOL EXAMINATION- 2009

Table 3 -Annual and Supplementary Examination Results - Regular + Private Students - All Categories

Sl. No.	Name of the Board	Number of Students											Pass %age			
		Appeared			Passed											
					Annual			Supplementary			Annual + Supplementary					
		Boys	Girls	Total	Boys	Girls	Total	Boys	Girls	Total	Boys	Girls	Total	Boys	Girls	Total
1	2	3	4	5	6	7	8	9	10	11	12	13	14	15	16	17
15	H.P. Board of School Education	73446	65300	138746	40630	35047	75677	8407	8174	16581	49037	43221	92258	66.8	66.2	66.5
16	J.K State Board of School Education	116958	105708	222666	45410	37243	82653	10879	10879	21758	56289	48122	104411	48.1	45.5	46.9
17	Jharkhand Academic Council, Ranchi	206165	149223	355388	164274	112456	276730	376	250	626	164650	112706	277356	79.9	75.5	78.0
18	Karnataka Secondary Education Examination Board	399078	361042	760120	285032	276019	561051	72849	50620	123469	357881	326639	684520	89.7	90.5	90.1
19	Kerala Board of Public Examination	225636	229709	455345	201034	214751	415785	13638	7850	21488	214672	222601	437273	95.1	96.9	96.0
20	Maharashtra State Board of Secondary & Higher Secondary Education	865157	696552	1561709	687418	573230	1260648	29782	17727	47509	717200	590957	1308157	82.9	84.8	83.8
21	Board of Secondary Education, Madhya Pradesh	432272	283426	715698	137267	100169	237436	84190	61696	145886	221457	161865	383322	51.2	57.1	53.6
22	Board of Secondary Education, Manipur	13790	13733	27523	8700	6990	15690				8700	6990	15690	63.1	50.9	57.0
23	Meghalaya Board of School Education	17488	18870	36358	8294	8710	17004				8294	8710	17004	47.4	46.2	46.8
24	Mizoram Board of School Education	6244	6470	12714	3904	3783	7687	145	166	311	4049	3949	7998	64.8	61.0	62.9
25	Nagaland Board of School Education	7340	7223	14563	5319	4875	10194				5319	4875	10194	72.5	67.5	70.0
26	Board of Secondary Education, Orissa	200829	180804	381633	123660	106383	230043	10628	8649	19277	134288	115032	249320	66.9	63.6	65.3
27	Punjab School Education Board	173525	142675	316200	141689	125907	267596	14039	7892	21931	155728	133799	289527	89.7	93.8	91.6
28	Board of Secondary Education, Rajasthan	623539	350599	974138	455312	257312	712624	13377	8794	22171	468689	266106	734795	75.2	75.9	75.4
29	Tamil Nadu State Board of School Examination	404425	419088	823513	318170	353277	671447				318170	353277	671447	78.7	84.3	81.5

RESULTS OF HIGH SCHOOL EXAMINATION- 2009

Table 3 -Annual and Supplementary Examination Results - Regular + Private Students - All Categories

Sl. No.	Name of the Board	Number of Students											Pass %age			
		Appeared			Passed											
		Annual			Supplementary			Annual + Supplementary			Boys	Girls	Total			
		Boys	Girls	Total	Boys	Girls	Total	Boys	Girls	Total				Boys	Girls	Total
1	2	3	4	5	6	7	8	9	10	11	12	13	14	15	16	17
30	Tripura Board of Secondary Education	20241	17856	38097	11336	8805	20141				11336	8805	20141	56.0	49.3	52.9
31	UP Board of High School & Intermediate Education	1788318	1334371	3122689	866345	903299	1769644				866345	903299	1769644	48.4	67.7	56.7
32	Uttanchal Shiksha Evm Pariksha Parishad	95807	77255	173062	56779	51319	108098				56779	51319	108098	59.3	66.4	62.5
33	West Bengal Board of Secondary Education	424708	418271	842979	350567	301684	652251				350567	301684	652251	82.5	72.1	77.4
34	Board of Madarsa Education, West Bengal, Kolkata *	14226	23265	37491	10230	14255	24485	1714	2925	4639	11944	17180	29124	84.0	73.8	77.7
Total		8990701	7059536	16050237	5902202	5026639	10928841	395350	281882	677232	6297552	5308521	11606073	70.0	75.2	72.3

RESULTS OF HIGH SCHOOL EXAMINATION- 2009

Table 4 -Annual and Supplementary Examination Results - Regular SC Students

Sl. No.	Name of the Board	Number of Students												Pass %age		
		Appeared			Passed											
					Annual			Supplementary			Annual + Supplementary					
		Boys	Girls	Total	Boys	Girls	Total	Boys	Girls	Total	Boys	Girls	Total	Boys	Girls	Total
1	2	3	4	5	6	7	8	9	10	11	12	13	14	15	16	17
Central Boards																
1	Central Board of Secondary Education, New Delhi	23766	18414	42180	20655	16065	36720	1487	1401	2888	22142	17466	39608	93.2	94.9	93.9
2	Council for the Indian School Certificate Examinations, New Delhi	1706	1142	2848	1643	1110	2753					1110	2753		97.2	96.7
State Boards																
3	Board of Secondary Education, Andhra Pradesh	95209	88695	183904	67990	63624	131614				67990	63624	131614	71.4	71.7	71.6
4	Board of Secondary Education Assam	10981	10230	21211	6618	5221	11839				6618	5221	11839	60.3	51.0	55.8
5	Assam Sanskrit Board	400	500	900	310	400	710				310	400	710	77.5	80.0	78.9
6	Banasthali Vidyapith, Rajasthan #		3	3		2	2					2	2		66.7	66.7
7	Bihar School Education Board	59428	29191	88619	34016	13830	47846	2065	1487	3552	36081	15317	51398	60.7	52.5	58.0
8	Bihar State Madrasa Education Board															
9	Chhattisgarh Board of Secondary Education	23333	19696	43029	11020	9360	20380	119	100	219	11139	9460	20599	47.7	48.0	47.9
10	Chhattisgarh Madrasa Board															
11	Chhattisgarh Sanskriti Vidya Mandalam															
12	Goa Board of Secondary & Higher Secondary Education	68	79	147	35	56	91	7	2	9	42	58	100	61.8	73.4	68.0
13	Gujarat Secondary & Higher Secondary Education Board	43948	25740	69688	18899	12795	31694	1840	1119	2959	20739	13914	34653	47.2	54.1	49.7
14	Board of School Education Haryana	32299	24333	56632	24946	18496	43442				24946	18496	43442	77.2	76.0	76.7

RESULTS OF HIGH SCHOOL EXAMINATION- 2009

Table 4 - Annual and Supplementary Examination Results - Regular SC Students

Sl. No.	Name of the Board	Number of Students												Pass %age		
		Appeared			Passed											
					Annual			Supplementary			Annual + Supplementary					
		Boys	Girls	Total	Boys	Girls	Total	Boys	Girls	Total	Boys	Girls	Total	Boys	Girls	Total
1	2	3	4	5	6	7	8	9	10	11	12	13	14	15	16	17
15	H.P. Board of School Education	15218	13421	28639	3621	3352	6973				3621	3352	6973	23.8	25.0	24.3
16	J.K State Board of School Education															
17	Jharkhand Academic Council, Ranchi	12857	7508	20365	10137	5186	15323	15	3	18	10152	5189	15341	79.0	69.1	75.3
18	Karnataka Secondary Education Examination Board	65542	58501	124043	43166	38992	82158	14496	11632	26128	57662	50624	108286	88.0	86.5	87.3
19	Kerala Board of Public Examination	20106	21278	41384	16121	18535	34656	1948	1416	3364	18069	19951	38020	89.9	93.8	91.9
20	Maharashtra State Board of Secondary & Higher Secondary Education	120860	99737	220597	91110	76084	167194	5134	3493	8627	96244	79577	175821	79.6	79.8	79.7
21	Board of Secondary Education, Madhya Pradesh	64909	38484	103393	18618	11888	30506	12189	8301	20490	30807	20189	50996	47.5	52.5	49.3
22	Board of Secondary Education, Manipur	508	534	1042	312	298	610				312	298	610	61.4	55.8	58.5
23	Meghalaya Board of School Education	82	59	141	69	43	112				69	43	112	84.1	72.9	79.4
24	Mizoram Board of School Education	14	22	36	10	17	27				10	17	27	71.4	77.3	75.0
25	Nagaland Board of School Education	89	75	164	68	56	124				68	56	124	76.4	74.7	75.6
26	Board of Secondary Education, Orissa	27166	23738	50904	15084	11861	26945	1337	1034	2371	16421	12895	29316	60.4	54.3	57.6
27	Punjab School Education Board	31968	30280	62248	25782	24715	50497				25782	24715	50497	80.6	81.6	81.1
28	Board of Secondary Education, Rajasthan	86498	42531	129029	65111	32135	97246	1928	1256	3184	67039	33391	100430	77.5	78.5	77.8
29	Tamil Nadu State Board of School Examination	97641	103999	201640	68262	78386	146648				68262	78386	146648	69.9	75.4	72.7

RESULTS OF HIGH SCHOOL EXAMINATION- 2009

Table 4 -Annual and Supplementary Examination Results - Regular SC Students

Sl. No.	Name of the Board	Number of Students												Pass %age		
		Appeared			Passed											
		Annual			Supplementary			Annual + Supplementary			Boys	Girls	Total			
		Boys	Girls	Total	Boys	Girls	Total	Boys	Girls	Total				Boys	Girls	Total
1	2	3	4	5	6	7	8	9	10	11	12	13	14	15	16	17
30	Tripura Board of Secondary Education	2868	2395	5263	1942	1365	3307				1942	1365	3307	67.7	57.0	62.8
31	UP Board of High School & Intermediate Education	323397	243589	566986	133445	140261	273706				133445	140261	273706	41.3	57.6	48.3
32	Uttanchal Shiksha Evm Pariksha Parishad	16366	12548	28914	8971	7536	16507				8971	7536	16507	54.8	60.1	57.1
33	West Bengal Board of Secondary Education	89278	74762	164040	75083	53688	128771				75083	53688	128771	84.1	71.8	78.5
34	Board of Madarsa Education, West Bengal, Kolkata *	254	351	605	158	168	326				158	168	326	62.2	47.9	53.9
Total		1266759	991835	2258594	763202	645525	1408727	42565	31244	73809	804124	676769	1482536	63.5	68.2	65.6

RESULTS OF HIGH SCHOOL EXAMINATION- 2009

Table 5 -Annual and Supplementary Examination Results - Private SC Students

Sl. No.	Name of the Board	Number of Students												Pass %age		
		Appeared			Passed											
		Annual			Supplementary			Annual + Supplementary			Boys	Girls	Total			
		Boys	Girls	Total	Boys	Girls	Total	Boys	Girls	Total				Boys	Girls	Total
1	2	3	4	5	6	7	8	9	10	11	12	13	14	15	16	17
Central Boards																
1	Central Board of Secondary Education, New Delhi	993	867	1860	432	298	730	117	101	218	549	399	948	55.3	46.0	51.0
2	Council for the Indian School Certificate Examinations, New Delhi	2	1	3	1	1	2				1	1	2	50.0	100.0	66.7
State Boards																
3	Board of Secondary Education, Andhra Pradesh	50841	29719	80560	4226	2568	6794	15816	12331	28147	20042	14899	34941	39.4	50.1	43.4
4	Board of Secondary Education Assam															
5	Assam Sanskrit Board	120	200	320	80	130	210				80	130	210	66.7	65.0	65.6
6	Banasthali Vidyapith, Rajasthan #															
7	Bihar School Education Board	5928	3390	9318	3995	2060	6055	90	67	157	4085	2127	6212	68.9	62.7	66.7
8	Bihar State Madrasa Education Board															
9	Chhattisgarh Board of Secondary Education	538	419	957	186	168	354	5	2	7	191	170	361	35.5	40.6	37.7
10	Chhattisgarh Madrasa Board															
11	Chhattisgarh Sanskriti Vidya Mandalam															
12	Goa Board of Secondary & Higher Secondary Education															
13	Gujarat Secondary & Higher Secondary Education Board	1298	420	1718	378	125	503	143	63	206	521	188	709	40.1	44.8	41.3
14	Board of School Education Haryana	2938	757	3695	1178	275	1453				1178	275	1453	40.1	36.3	39.3

RESULTS OF HIGH SCHOOL EXAMINATION- 2009

Table 5 -Annual and Supplementary Examination Results - Private SC Students

Sl. No.	Name of the Board	Number of Students												Pass %age		
		Appeared			Passed											
					Annual			Supplementary			Annual + Supplementary					
		Boys	Girls	Total	Boys	Girls	Total	Boys	Girls	Total	Boys	Girls	Total	Boys	Girls	Total
1	2	3	4	5	6	7	8	9	10	11	12	13	14	15	16	17
15	H.P. Board of School Education	2296	1994	4290	732	472	1204	2161	2124	4285	2893	2596	5489	126.0	130.2	127.9
16	J.K State Board of School Education															
17	Jharkhand Academic Council, Ranchi	6025	3655	9680	4332	2392	6724	7	15	22	4339	2407	6746	72.0	65.9	69.7
18	Karnataka Secondary Education Examination Board	3899	1111	5010	267	141	408	1243	414	1657	1510	555	2065	38.7	50.0	41.2
19	Kerala Board of Public Examination	1010	561	1571	602	401	1003				602	401	1003	59.6	71.5	63.8
20	Maharashtra State Board of Secondary & Higher Secondary Education	5507	2651	8158	1743	978	2721	330	162	492	2073	1140	3213	37.6	43.0	39.4
21	Board of Secondary Education, Madhya Pradesh	7182	3297	10479	571	310	881	1047	606	1653	1618	916	2534	22.5	27.8	24.2
22	Board of Secondary Education, Manipur	61	72	133	24	21	45				24	21	45	39.3	29.2	33.8
23	Meghalaya Board of School Education	69	63	132	22	24	46				22	24	46	31.9	38.1	34.8
24	Mizoram Board of School Education	6	8	14	3	1	4		1	1	3	2	5	50.0	25.0	35.7
25	Nagaland Board of School Education															
26	Board of Secondary Education, Orissa	7006	17943	24949	2850	1792	4642	647	463	1110	3497	2255	5752	49.9	12.6	23.1
27	Punjab School Education Board	16071	10336	26407	8649	6071	14720	3555	2201	5756	12204	8272	20476	75.9	80.0	77.5
28	Board of Secondary Education, Rajasthan	7742	5086	12828	660	472	1132	184	131	315	844	603	1447	10.9	11.9	11.3
29	Tamil Nadu State Board of School Examination															

RESULTS OF HIGH SCHOOL EXAMINATION- 2009

Table 5 -Annual and Supplementary Examination Results - Private SC Students

Sl. No.	Name of the Board	Number of Students												Pass %age		
		Appeared			Passed											
		Annual			Supplementary			Annual + Supplementary			Boys	Girls	Total			
		Boys	Girls	Total	Boys	Girls	Total	Boys	Girls	Total				Boys	Girls	Total
1	2	3	4	5	6	7	8	9	10	11	12	13	14	15	16	17
30	Tripura Board of Secondary Education	752	711	1463	275	235	510				275	235	510	36.6	33.1	34.9
31	UP Board of High School & Intermediate Education	27453	12161	39614	7530	4835	12365				7530	4835	12365	27.4	39.8	31.2
32	Uttanchal Shiksha Evm Pariksha Parishad	3628	1326	4954	1234	497	1731				1234	497	1731	34.0	37.5	34.9
33	West Bengal Board of Secondary Education	18296	21129	39425	10050	10801	20851				10050	10801	20851	54.9	51.1	52.9
34	Board of Madarsa Education, West Bengal, Kolkata *	63	96	159	30	61	91				30	61	91	47.6	63.5	57.2
Total		169724	117973	287697	50050	35129	85179	25345	18681	44026	75395	53810	129205	44.4	45.6	44.9

Blank row indicates that there is no provision of examination for private candidates in the Board.

RESULTS OF HIGH SCHOOL EXAMINATION- 2009

Table 6 -Annual and Supplementary Examination Results - Regular + Private SC Students

Sl. No.	Name of the Board	Number of Students												Pass %age		
		Appeared			Passed											
		Boys	Girls	Total	Annual			Supplementary			Annual + Supplementary					
					Boys	Girls	Total	Boys	Girls	Total	Boys	Girls	Total	Boys	Girls	Total
1	2	3	4	5	6	7	8	9	10	11	12	13	14	15	16	17
Central Boards																
1	Central Board of Secondary Education, New Delhi	24759	19281	44040	21087	16363	37450	1604	1502	3106	22691	17865	40556	91.6	92.7	92.1
2	Council for the Indian School Certificate Examinations, New Delhi	1708	1143	2851	1644	1111	2755				1644	1111	2755	96.3	97.2	96.6
State Boards																
3	Board of Secondary Education, Andhra Pradesh	146050	118414	264464	72216	66192	138408	15816	12331	28147	88032	78523	166555	60.3	66.3	63.0
4	Board of Secondary Education Assam	10981	10230	21211	6618	5221	11839				6618	5221	11839	60.3	51.0	55.8
5	Assam Sanskrit Board	520	700	1220	390	530	920				390	530	920	75.0	75.7	75.4
6	Banasthali Vidyapith, Rajasthan #		3	3		2	2					2	2		66.7	66.7
7	Bihar School Education Board	65356	32581	97937	38011	15890	53901	2155	1554	3709	40166	17444	57610	61.5	53.5	58.8
8	Bihar State Madrasa Education Board															
9	Chhattisgarh Board of Secondary Education	23871	20115	43986	11206	9528	20734	124	102	226	11330	9630	20960	47.5	47.9	47.7
10	Chhattisgarh Madrasa Board															
11	Chhattisgarh Sanskriti Vidya Mandalam															
12	Goa Board of Secondary & Higher Secondary Education	68	79	147	35	56	91	7	2	9	42	58	100	61.8	73.4	68.0
13	Gujarat Secondary & Higher Secondary Education Board	45246	26160	71406	19277	12920	32197	1983	1182	3165	21260	14102	35362	47.0	53.9	49.5
14	Board of School Education Haryana	35237	25090	60327	26124	18771	44895				26124	18771	44895	74.1	74.8	74.4

RESULTS OF HIGH SCHOOL EXAMINATION- 2009

Table 6 -Annual and Supplementary Examination Results - Regular + Private SC Students

Sl. No.	Name of the Board	Number of Students												Pass %age		
		Appeared			Passed											
					Annual			Supplementary			Annual + Supplementary					
		Boys	Girls	Total	Boys	Girls	Total	Boys	Girls	Total	Boys	Girls	Total	Boys	Girls	Total
1	2	3	4	5	6	7	8	9	10	11	12	13	14	15	16	17
15	H.P. Board of School Education	17514	15415	32929	4353	3824	8177	2161	2124	4285	6514	5948	12462	37.2	38.6	37.8
16	J.K State Board of School Education															
17	Jharkhand Academic Council, Ranchi	18882	11163	30045	14469	7578	22047	22	18	40	14491	7596	22087	76.7	68.0	73.5
18	Karnataka Secondary Education Examination Board	69441	59612	129053	43433	39133	82566	15739	12046	27785	59172	51179	110351	85.2	85.9	85.5
19	Kerala Board of Public Examination	21116	21839	42955	16723	18936	35659	1948	1416	3364	18671	20352	39023	88.4	93.2	90.8
20	Maharashtra State Board of Secondary & Higher Secondary Education	126367	102388	228755	92853	77062	169915	5464	3655	9119	98317	80717	179034	77.8	78.8	78.3
21	Board of Secondary Education, Madhya Pradesh	72091	41781	113872	19189	12198	31387	13236	8907	22143	32425	21105	53530	45.0	50.5	47.0
22	Board of Secondary Education, Manipur	569	606	1175	336	319	655				336	319	655	59.1	52.6	55.7
23	Meghalaya Board of School Education	151	122	273	91	67	158				91	67	158	60.3	54.9	57.9
24	Mizoram Board of School Education	20	30	50	13	18	31		1	1	13	19	32	65.0	63.3	64.0
25	Nagaland Board of School Education	89	75	164	68	56	124				68	56	124	76.4	74.7	75.6
26	Board of Secondary Education, Orissa	34172	41681	75853	17934	13653	31587	1984	1497	3481	19918	15150	35068	58.3	36.3	46.2
27	Punjab School Education Board	48039	40616	88655	34431	30786	65217	3555	2201	5756	37986	32987	70973	79.1	81.2	80.1
28	Board of Secondary Education, Rajasthan	94240	47617	141857	65771	32607	98378	2112	1387	3499	67883	33994	101877	72.0	71.4	71.8
29	Tamil Nadu State Board of School Examination	97641	103999	201640	68262	78386	146648				68262	78386	146648	69.9	75.4	72.7

RESULTS OF HIGH SCHOOL EXAMINATION- 2009

Table 6 -Annual and Supplementary Examination Results - Regular + Private SC Students

Sl. No.	Name of the Board	Number of Students												Pass %age		
		Appeared			Passed											
					Annual			Supplementary			Annual + Supplementary					
		Boys	Girls	Total	Boys	Girls	Total	Boys	Girls	Total	Boys	Girls	Total	Boys	Girls	Total
1	2	3	4	5	6	7	8	9	10	11	12	13	14	15	16	17
30	Tripura Board of Secondary Education	3620	3106	6726	2217	1600	3817				2217	1600	3817	61.2	51.5	56.7
31	UP Board of High School & Intermediate Education	350850	255750	606600	140975	145096	286071				140975	145096	286071	40.2	56.7	47.2
32	Uttanchal Shiksha Evm Pariksha Parishad	19994	13874	33868	10205	8033	18238				10205	8033	18238	51.0	57.9	53.9
33	West Bengal Board of Secondary Education	107574	95891	203465	85133	64489	149622				85133	64489	149622	79.1	67.3	73.5
34	Board of Madarsa Education, West Bengal, Kolkata *	317	447	764	188	229	417				188	229	417	59.3	51.2	54.6
Total		1436483	1109808	2546291	813252	680654	1493906	67910	49925	117835	881162	730579	1611741	61.3	65.8	63.3

RESULTS OF HIGH SCHOOL EXAMINATION- 2009

Table 7 -Annual and Supplementary Examination Results - Regular ST Students

Sl. No.	Name of the Board	Number of Students												Pass %age		
		Appeared			Passed											
		Boys	Girls	Total	Annual			Supplementary			Annual + Supplementary					
					Boys	Girls	Total	Boys	Girls	Total	Boys	Girls	Total	Boys	Girls	Total
1	2	3	4	5	6	7	8	9	10	11	12	13	14	15	16	17
Central Boards																
1	Central Board of Secondary Education, New Delhi	13691	10759	24450	8754	6353	15107	2382	2130	4512	11136	8483	19619	81.3	78.8	80.2
2	Council for the Indian School Certificate Examinations, New Delhi	1824	1588	3412	1781	1546	3327				1781	1546	3327	97.6	97.4	97.5
State Boards																
3	Board of Secondary Education, Andhra Pradesh	34711	28283	62994	27407	21903	49310				27407	21903	49310	79.0	77.4	78.3
4	Board of Secondary Education Assam	23613	21659	45272	12411	9718	22129				12411	9718	22129	52.6	44.9	48.9
5	Assam Sanskrit Board	460	447	907	400	330	730				400	330	730	87.0	73.8	80.5
6	Banasthali Vidyapith, Rajasthan #		17	17		12	12		1	1		13	13		76.5	76.5
7	Bihar School Education Board	5609	2662	8271	3301	1497	4798	163	133	296	3464	1630	5094	61.8	61.2	61.6
8	Bihar State Madrasa Education Board															
9	Chhattisgarh Board of Secondary Education	41973	35688	77661	19648	16078	35726	263	196	459	19911	16274	36185	47.4	45.6	46.6
10	Chhattisgarh Madrasa Board															
11	Chhattisgarh Sanskriti Vidya Mandalam	73	53	126	68	50	118	4	3	7	72	53	125	98.6	100.0	99.2
12	Goa Board of Secondary & Higher Secondary Education	404	449	853	268	257	525	14	11	25	282	268	550	69.8	59.7	64.5
13	Gujarat Secondary & Higher Secondary Education Board	56855	41207	98062	23864	19720	43584	2980	1983	4963	26844	21703	48547	47.2	52.7	49.5
14	Board of School Education Haryana	136	77	213	102	13	115				102	13	115	75.0	16.9	54.0

RESULTS OF HIGH SCHOOL EXAMINATION- 2009

Table 7 -Annual and Supplementary Examination Results - Regular ST Students

Sl. No.	Name of the Board	Number of Students												Pass %age		
		Appeared			Passed											
					Annual			Supplementary			Annual + Supplementary					
		Boys	Girls	Total	Boys	Girls	Total	Boys	Girls	Total	Boys	Girls	Total	Boys	Girls	Total
1	2	3	4	5	6	7	8	9	10	11	12	13	14	15	16	17
15	H.P. Board of School Education	3621	3352	6973	1892	1666	3558				1892	1666	3558	52.3	49.7	51.0
16	J.K State Board of School Education															
17	Jharkhand Academic Council, Ranchi	27291	20537	47828	20982	14930	35912	28	18	46	21010	14948	35958	77.0	72.8	75.2
18	Karnataka Secondary Education Examination Board	24332	20590	44922	16431	14212	30643	4848	3560	8408	21279	17772	39051	87.5	86.3	86.9
19	Kerala Board of Public Examination	2474	2653	5127	1892	2169	4061	251	237	488	2143	2406	4549	86.6	90.7	88.7
20	Maharashtra State Board of Secondary & Higher Secondary Education	62034	45417	107451	48304	35307	83611	1741	992	2733	50045	36299	86344	80.7	79.9	80.4
21	Board of Secondary Education, Madhya Pradesh	48351	31214	79565	11636	7338	18974	11184	7608	18792	22820	14946	37766	47.2	47.9	47.5
22	Board of Secondary Education, Manipur	4554	4338	8892	3298	2797	6095				3298	2797	6095	72.4	64.5	68.5
23	Meghalaya Board of School Education	5946	6760	12706	4603	4949	9552				4603	4949	9552	77.4	73.2	75.2
24	Mizoram Board of School Education	4345	4611	8956	3398	3386	6784				3398	3386	6784	78.2	73.4	75.7
25	Nagaland Board of School Education	6567	6597	13164	4702	4408	9110				4702	4408	9110	71.6	66.8	69.2
26	Board of Secondary Education, Orissa	26440	21015	47455	13536	9675	23211	1133	971	2104	14669	10646	25315	55.5	50.7	53.3
27	Punjab School Education Board	9059	8608	17667	8034	7766	15800				8034	7766	15800	88.7	90.2	89.4
28	Board of Secondary Education, Rajasthan	68246	36285	104531	46936	24277	71213	2282	1301	3583	49218	25578	74796	72.1	70.5	71.6
29	Tamil Nadu State Board of School Examination	3460	3015	6475	2476	2178	4654				2476	2178	4654	71.6	72.2	71.9

RESULTS OF HIGH SCHOOL EXAMINATION- 2009

Table 7 -Annual and Supplementary Examination Results - Regular ST Students

Sl. No.	Name of the Board	Number of Students												Pass %age		
		Appeared			Passed											
		Annual			Supplementary			Annual + Supplementary			Boys	Girls	Total			
		Boys	Girls	Total	Boys	Girls	Total	Boys	Girls	Total				Boys	Girls	Total
1	2	3	4	5	6	7	8	9	10	11	12	13	14	15	16	17
30	Tripura Board of Secondary Education	4377	3316	7693	1618	925	2543				1618	925	2543	37.0	27.9	33.1
31	UP Board of High School & Intermediate Education	8998	5907	14905	4470	3777	8247				4470	3777	8247	49.7	63.9	55.3
32	Uttanchal Shiksha Evm Pariksha Parishad	2708	2781	5489	1576	1601	3177				1576	1601	3177	58.2	57.6	57.9
33	West Bengal Board of Secondary Education	16279	11726	28005	11629	6657	18286				11629	6657	18286	71.4	56.8	65.3
34	Board of Madarsa Education, West Bengal, Kolkata *	112	94	206	64	50	114				64	50	114	57.1	53.2	55.3
Total		508543	381705	890248	305481	225545	531026	27273	19144	46417	332754	244689	577443	65.4	64.1	64.9

RESULTS OF HIGH SCHOOL EXAMINATION- 2009

Table 8 -Annual and Supplementary Examination Results - Private ST Students

Sl. No.	Name of the Board	Number of Students												Pass %age		
		Appeared			Passed											
					Annual			Supplementary			Annual + Supplementary					
		Boys	Girls	Total	Boys	Girls	Total	Boys	Girls	Total	Boys	Girls	Total	Boys	Girls	Total
1	2	3	4	5	6	7	8	9	10	11	12	13	14	15	16	17
Central Boards																
1	Central Board of Secondary Education, New Delhi	767	757	1524	296	36	332	173	162	335	469	198	667	61.1	26.2	43.8
2	Council for the Indian School Certificate Examinations, New Delhi	2		2	1		1				1		1	50.0		50.0
State Boards																
3	Board of Secondary Education, Andhra Pradesh	15800	7992	23792	1942	919	2861	5112	3470	8582	7054	4389	11443	44.6	54.9	48.1
4	Board of Secondary Education Assam															
5	Assam Sanskrit Board	150	70	220	130	28	158				130	28	158	86.7	40.0	71.8
6	Banasthali Vidyapith, Rajasthan #															
7	Bihar School Education Board	886	723	1609	602	461	1063	7	40	47	609	501	1110	68.7	69.3	69.0
8	Bihar State Madrasa Education Board															
9	Chhattisgarh Board of Secondary Education	1514	1216	2730	487	390	877	9	9	18	496	399	895	32.8	32.8	32.8
10	Chhattisgarh Madrasa Board															
11	Chhattisgarh Sanskriti Vidya Mandalam	4	6	10	4	3	7		2	2	4	5	9	100.0	83.3	90.0
12	Goa Board of Secondary & Higher Secondary Education															
13	Gujarat Secondary & Higher Secondary Education Board	538	258	796	167	105	272	50	29	79	217	134	351	40.3	51.9	44.1
14	Board of School Education Haryana	33	7	40	13	1	14				13	1	14	39.4	14.3	35.0

RESULTS OF HIGH SCHOOL EXAMINATION- 2009

Table 8 - Annual and Supplementary Examination Results - Private ST Students

Sl. No.	Name of the Board	Number of Students												Pass %age		
		Appeared			Passed											
		Boys	Girls	Total	Annual			Supplementary			Annual + Supplementary					
					Boys	Girls	Total	Boys	Girls	Total	Boys	Girls	Total	Boys	Girls	Total
1	2	3	4	5	6	7	8	9	10	11	12	13	14	15	16	17
15	H.P. Board of School Education	732	472	1204	282	178	460	462	453	915	744	631	1375	101.6	133.7	114.2
16	J.K State Board of School Education															
17	Jharkhand Academic Council, Ranchi	13610	8593	22203	9536	5751	15287	16	13	29	9552	5764	15316	70.2	67.1	69.0
18	Karnataka Secondary Education Examination Board	1068	272	1340	105	36	141	293	96	389	398	132	530	37.3	48.5	39.6
19	Kerala Board of Public Examination	380	159	539	116	83	199				116	83	199	30.5	52.2	36.9
20	Maharashtra State Board of Secondary & Higher Secondary Education	1446	542	1988	534	227	761	84	18	102	618	245	863	42.7	45.2	43.4
21	Board of Secondary Education, Madhya Pradesh	7752	3202	10954	424	193	617	1215	578	1793	1639	771	2410	21.1	24.1	22.0
22	Board of Secondary Education, Manipur	305	400	705	147	168	315				147	168	315	48.2	42.0	44.7
23	Meghalaya Board of School Education	9611	10480	20091	2456	2762	5218				2456	2762	5218	25.6	26.4	26.0
24	Mizoram Board of School Education	1748	1733	3481	554	488	1042	145	166	311	699	654	1353	40.0	37.7	38.9
25	Nagaland Board of School Education	4	5	9	4	5	9				4	5	9	100.0	100.0	100.0
26	Board of Secondary Education, Orissa	6988	4817	11805	2557	1672	4229	653	532	1185	3210	2204	5414	45.9	45.8	45.9
27	Punjab School Education Board	3472	2495	5967	2215	1799	4014	29	3	32	2244	1802	4046	64.6	72.2	67.8
28	Board of Secondary Education, Rajasthan	6474	4253	10727	374	273	647	122	75	197	496	348	844	7.7	8.2	7.9
29	Tamil Nadu State Board of School Examination															

RESULTS OF HIGH SCHOOL EXAMINATION- 2009

Table 8 -Annual and Supplementary Examination Results - Private ST Students

Sl. No.	Name of the Board	Number of Students												Pass %age		
		Appeared			Passed											
		Annual			Supplementary			Annual + Supplementary			Boys	Girls	Total			
		Boys	Girls	Total	Boys	Girls	Total	Boys	Girls	Total				Boys	Girls	Total
1	2	3	4	5	6	7	8	9	10	11	12	13	14	15	16	17
30	Tripura Board of Secondary Education	2463	2298	4761	908	793	1701				908	793	1701	36.9	34.5	35.7
31	UP Board of High School & Intermediate Education	626	279	905	231	139	370				231	139	370	36.9	49.8	40.9
32	Uttanchal Shiksha Evm Pariksha Parishad	800	439	1239	257	173	430				257	173	430	32.1	39.4	34.7
33	West Bengal Board of Secondary Education	6381	5683	12064	2489	1877	4366				2489	1877	4366	39.0	33.0	36.2
34	Board of Madarsa Education, West Bengal, Kolkata *	31	29	60	14	17	31				14	17	31	45.2	58.6	51.7
Total		83585	57180	140765	26845	18577	45422	8370	5646	14016	35215	24223	59438	42.1	42.4	42.2

Blank row indicates that there is no provision of examination for private candidates in the Board.

RESULTS OF HIGH SCHOOL EXAMINATION- 2009

Table 9 -Annual and Supplementary Examination Results - Regular + Private ST Students

Sl. No.	Name of the Board	Number of Students												Pass %age		
		Appeared			Passed											
		Boys	Girls	Total	Annual			Supplementary			Annual + Supplementary					
					Boys	Girls	Total	Boys	Girls	Total	Boys	Girls	Total	Boys	Girls	Total
1	2	3	4	5	6	7	8	9	10	11	12	13	14	15	16	17
Central Boards																
1	Central Board of Secondary Education, New Delhi	14458	11516	25974	9050	6389	15439	2555	2292	4847	11605	8681	20286	80.3	75.4	78.1
2	Council for the Indian School Certificate Examinations, New Delhi	1826	1588	3414	1782	1546	3328				1782	1546	3328	97.6	97.4	97.5
State Boards																
3	Board of Secondary Education, Andhra Pradesh	50511	36275	86786	29349	22822	52171	5112	3470	8582	34461	26292	60753	68.2	72.5	70.0
4	Board of Secondary Education Assam	23613	21659	45272	12411	9718	22129				12411	9718	22129	52.6	44.9	48.9
5	Assam Sanskrit Board	610	517	1127	530	358	888				530	358	888	86.9	69.2	78.8
6	Banasthali Vidyapith, Rajasthan #		17	17		12	12		1	1		13	13		76.5	76.5
7	Bihar School Education Board	6495	3385	9880	3903	1958	5861	170	173	343	4073	2131	6204	62.7	63.0	62.8
8	Bihar State Madrasa Education Board															
9	Chhattisgarh Board of Secondary Education	43487	36904	80391	20135	16468	36603	272	205	477	20407	16673	37080	46.9	45.2	46.1
10	Chhattisgarh Madrasa Board															
11	Chhattisgarh Sanskriti Vidya Mandalam	77	59	136	72	53	125	4	5	9	76	58	134	98.7	98.3	98.5
12	Goa Board of Secondary & Higher Secondary Education	404	449	853	268	257	525	14	11	25	282	268	550	69.8	59.7	64.5
13	Gujarat Secondary & Higher Secondary Education Board	57393	41465	98858	24031	19825	43856	3030	2012	5042	27061	21837	48898	47.2	52.7	49.5
14	Board of School Education Haryana	169	84	253	115	14	129				115	14	129	68.0	16.7	51.0

RESULTS OF HIGH SCHOOL EXAMINATION- 2009

Table 9 -Annual and Supplementary Examination Results - Regular + Private ST Students

Sl. No.	Name of the Board	Number of Students												Pass %age		
		Appeared			Passed											
					Annual			Supplementary			Annual + Supplementary					
		Boys	Girls	Total	Boys	Girls	Total	Boys	Girls	Total	Boys	Girls	Total	Boys	Girls	Total
1	2	3	4	5	6	7	8	9	10	11	12	13	14	15	16	17
15	H.P. Board of School Education	4353	3824	8177	2174	1844	4018	462	453	915	2636	2297	4933	60.6	60.1	60.3
16	J.K State Board of School Education															
17	Jharkhand Academic Council, Ranchi	40901	29130	70031	30518	20681	51199	44	31	75	30562	20712	51274	74.7	71.1	73.2
18	Karnataka Secondary Education Examination Board	25400	20862	46262	16536	14248	30784	5141	3656	8797	21677	17904	39581	85.3	85.8	85.6
19	Kerala Board of Public Examination	2854	2812	5666	2008	2252	4260	251	237	488	2259	2489	4748	79.2	88.5	83.8
20	Maharashtra State Board of Secondary & Higher Secondary Education	63480	45959	109439	48838	35534	84372	1825	1010	2835	50663	36544	87207	79.8	79.5	79.7
21	Board of Secondary Education, Madhya Pradesh	56103	34416	90519	12060	7531	19591	12399	8186	20585	24459	15717	40176	43.6	45.7	44.4
22	Board of Secondary Education, Manipur	4859	4738	9597	3445	2965	6410				3445	2965	6410	70.9	62.6	66.8
23	Meghalaya Board of School Education	15557	17240	32797	7059	7711	14770				7059	7711	14770	45.4	44.7	45.0
24	Mizoram Board of School Education	6093	6344	12437	3952	3874	7826	145	166	311	4097	4040	8137	67.2	63.7	65.4
25	Nagaland Board of School Education	6571	6602	13173	4706	4413	9119				4706	4413	9119	71.6	66.8	69.2
26	Board of Secondary Education, Orissa	33428	25832	59260	16093	11347	27440	1786	1503	3289	17879	12850	30729	53.5	49.7	51.9
27	Punjab School Education Board	12531	11103	23634	10249	9565	19814	29	3	32	10278	9568	19846	82.0	86.2	84.0
28	Board of Secondary Education, Rajasthan	74720	40538	115258	47310	24550	71860	2404	1376	3780	49714	25926	75640	66.5	64.0	65.6
29	Tamil Nadu State Board of School Examination	3460	3015	6475	2476	2178	4654				2476	2178	4654	71.6	72.2	71.9

RESULTS OF HIGH SCHOOL EXAMINATION- 2009

Table 9 -Annual and Supplementary Examination Results - Regular + Private ST Students

Sl. No.	Name of the Board	Number of Students												Pass %age		
		Appeared			Passed											
					Annual			Supplementary			Annual + Supplementary					
		Boys	Girls	Total	Boys	Girls	Total	Boys	Girls	Total	Boys	Girls	Total	Boys	Girls	Total
1	2	3	4	5	6	7	8	9	10	11	12	13	14	15	16	17
30	Tripura Board of Secondary Education	6840	5614	12454	2526	1718	4244				2526	1718	4244	36.9	30.6	34.1
31	UP Board of High School & Intermediate Education	9624	6186	15810	4701	3916	8617				4701	3916	8617	48.8	63.3	54.5
32	Uttanchal Shiksha Evm Pariksha Parishad	3508	3220	6728	1833	1774	3607				1833	1774	3607	52.3	55.1	53.6
33	West Bengal Board of Secondary Education	22660	17409	40069	14118	8534	22652				14118	8534	22652	62.3	49.0	56.5
34	Board of Madarsa Education, West Bengal, Kolkata *	143	123	266	78	67	145				78	67	145	54.5	54.5	54.5
Total		592128	438885	1031013	332326	244122	576448	35643	24790	60433	367969	268912	636881	62.1	61.3	61.8

RESULTS OF HIGH SCHOOL EXAMINATION- 2009

Table 10 -Annual and Supplementary Examination Results - Percentage-wise-All Categories

Sl. No.	Name of the Board	Total Number of Students Passed	Out of the Total, Number of Students passed with marks			Percentage of Students passed with marks		
			60% & above	50% to below 60%	Below 50%	60% & above	50% to below 60%	Below 50%
1	2	3	4	5	6	7	8	9
Central Boards								
1	Central Board of Secondary Education, New Delhi	756238	456707	140789	158742	60.4	18.6	21.0
2	Council for the Indian School Certificate Examinations, New Delhi	105462	94177	9166	2119	89.3	8.7	2.0
State Boards								
3	Board of Secondary Education, Andhra Pradesh	1057195	678655	287989	90551	64.2	27.2	8.6
4	Board of Secondary Education Assam	193370	17171	30642	145557	8.9	15.8	75.3
5	Assam Sanskrit Board	3175	2125	Not provided		66.9	Not provided	
6	Banasthali Vidyapith, Rajasthan #	169	118	44	7	69.8	26.0	4.1
7	Bihar School Education Board	614433	118226	163638	332569	19.2	26.6	54.1
8	Bihar State Madrasa Education Board	78480	32038	46359	83	40.8	59.1	0.1
9	Chhattisgarh Board of Secondary Education	162550	33939	38074	90537	20.9	23.4	55.7
10	Chhattisgarh Madrasa Board	97	58	30	9	59.8	30.9	9.3
11	Chhattisgarh Sanskriti Vidya Mandalam	207	101	46	60	48.8	22.2	29.0
12	Goa Board of Secondary & Higher Secondary Education	13141	4229	3311	5601	32.2	25.2	42.6
13	Gujarat Secondary & Higher Secondary Education Board	473750	182965	138536	152249	38.6	29.2	32.1
14	Board of School Education Haryana	285276	78103	89816	117357	27.4	31.5	41.1

RESULTS OF HIGH SCHOOL EXAMINATION- 2009

Table 10 -Annual and Supplementary Examination Results - Percentage-wise-All Categories

Sl. No.	Name of the Board	Total Number of Students Passed	Out of the Total, Number of Students passed with marks			Percentage of Students passed with marks		
			60% & above	50% to below 60%	Below 50%	60% & above	50% to below 60%	Below 50%
1	2	3	4	5	6	7	8	9
15	H.P. Board of School Education	92258	38629	22413	31216	41.9	24.3	33.8
16	J.K State Board of School Education	104411	8786	13247	82378	8.4	12.7	78.9
17	Jharkhand Academic Council, Ranchi	277356	81129	99332	96895	29.3	35.8	34.9
18	Karnataka Secondary Education Examination Board	684520	237302	169750	277468	34.7	24.8	40.5
19	Kerala Board of Public Examination	437273	102697	70286	264290	23.5	16.1	60.4
20	Maharashtra State Board of Secondary & Higher Secondary Education	1308157	650022	476697	181438	49.7	36.4	13.9
21	Board of Secondary Education, Madhya Pradesh	383322	89340	123487	170495	23.3	32.2	44.5
22	Board of Secondary Education, Manipur	15690	4026	4692	6972	25.7	29.9	44.4
23	Meghalaya Board of School Education	17004	2780	6559	7665	16.3	38.6	45.1
24	Mizoram Board of School Education	7998	1634	2344	4020	20.4	29.3	50.3
25	Nagaland Board of School Education	10194	563	1292	8339	5.5	12.7	81.8
26	Board of Secondary Education, Orissa	249320	43904	77985	127431	17.6	31.3	51.1
27	Punjab School Education Board	289527	Percentage-wise Results not awarded					
28	Board of Secondary Education, Rajasthan	734795	141149	221839	371807	19.2	30.2	50.6
29	Tamil Nadu State Board of School Examination	671447	392172	150709	128566	58.4	22.4	19.1

RESULTS OF HIGH SCHOOL EXAMINATION- 2009

Table 10 -Annual and Supplementary Examination Results - Percentage-wise-All Categories

Sl. No.	Name of the Board	Total Number of Students Passed	Out of the Total, Number of Students passed with marks			Percentage of Students passed with marks		
			60% & above	50% to below 60%	Below 50%	60% & above	50% to below 60%	Below 50%
1	2	3	4	5	6	7	8	9
30	Tripura Board of Secondary Education	20141	1357	2267	16517	6.7	11.3	82.0
31	UP Board of High School & Intermediate Education	1769644	284212	686466	798966	16.1	38.8	45.1
32	Uttranchal Shiksha Evm Pariksha Parishad	108098	12929	36536	58633	12.0	33.8	54.2
33	West Bengal Board of Secondary Education	652251	Due to implementation of partial grading system Percentage-wise Results not available					
34	Board of Madarsa Education, West Bengal , Kolkata *	29124	Percentage-wise Results not maintained					
Total		11606073						

RESULTS OF HIGH SCHOOL EXAMINATION- 2009

Table 11 -Annual and Supplementary Examination Results - Percentage-wise-SC Students

Sl. No.	Name of the Board	Total Number of Students Passed	Out of the Total, Number of Students passed with marks			Percentage of Students passed with marks		
			60% & above	50% to below 60%	Below 50%	60% & above	50% to below 60%	Below 50%
1	2	3	4	5	6	7	8	9
Central Boards								
1	Central Board of Secondary Education, New Delhi	40556	15861	9861	14834	39.1	24.3	36.6
2	Council for the Indian School Certificate Examinations, New Delhi	2755	2277	389	89	82.6	14.1	3.2
State Boards								
3	Board of Secondary Education, Andhra Pradesh	166555	80515	39158	46882	48.3	23.5	28.1
4	Board of Secondary Education Assam	11839	Percentage-wise Results not maintained for this category					
5	Assam Sanskrit Board	920	694	Not provided		75.4	Not provided	
6	Banasthali Vidyapith, Rajasthan #	2	2			100.0		
7	Bihar School Education Board	57610	15160	13379	29071	26.3	23.2	50.5
8	Bihar State Madrasa Education Board							
9	Chhattisgarh Board of Secondary Education	20960	3496	4934	12530	16.7	23.5	59.8
10	Chhattisgarh Madrasa Board							
11	Chhattisgarh Sanskriti Vidya Mandalam							
12	Goa Board of Secondary & Higher Secondary Education	100	30	22	48	30.0	22.0	48.0
13	Gujarat Secondary & Higher Secondary Education Board	35362	10675	10794	13893	30.2	30.5	39.3
14	Board of School Education Haryana	44895	6934	13259	24702	15.4	29.5	55.0

RESULTS OF HIGH SCHOOL EXAMINATION- 2009

Table 11 -Annual and Supplementary Examination Results - Percentage-wise-SC Students

Sl. No.	Name of the Board	Total Number of Students Passed	Out of the Total, Number of Students passed with marks			Percentage of Students passed with marks		
			60% & above	50% to below 60%	Below 50%	60% & above	50% to below 60%	Below 50%
1	2	3	4	5	6	7	8	9
15	H.P. Board of School Education	12462	804	3514	8144	6.5	28.2	65.4
16	J.K State Board of School Education							
17	Jharkhand Academic Council, Ranchi	22087	5145	7773	9169	23.3	35.2	41.5
18	Karnataka Secondary Education Examination Board	110351	25532	27209	57610	23.1	24.7	52.2
19	Kerala Board of Public Examination	39023	3135	3826	32062	8.0	9.8	82.2
20	Maharashtra State Board of Secondary & Higher Secondary Education	179034	75371	72063	31600	42.1	40.3	17.7
21	Board of Secondary Education, Madhya Pradesh	53530	9493	17613	26424	17.7	32.9	49.4
22	Board of Secondary Education, Manipur	655	139	176	340	21.2	26.9	51.9
23	Meghalaya Board of School Education	158	31	53	74	19.6	33.5	46.8
24	Mizoram Board of School Education	32	12	9	11	37.5	28.1	34.4
25	Nagaland Board of School Education	124	30	36	58	24.2	29.0	46.8
26	Board of Secondary Education, Orissa	35068	3690	9704	21674	10.5	27.7	61.8
27	Punjab School Education Board	70973	Percentage-wise Results not awarded					
28	Board of Secondary Education, Rajasthan	101877	17650	30202	54025	17.3	29.6	53.0
29	Tamil Nadu State Board of School Examination	146648	67702	39485	39461	46.2	26.9	26.9

RESULTS OF HIGH SCHOOL EXAMINATION- 2009

Table 11 -Annual and Supplementary Examination Results - Percentage-wise-SC Students

Sl. No.	Name of the Board	Total Number of Students Passed	Out of the Total, Number of Students passed with marks			Percentage of Students passed with marks		
			60% & above	50% to below 60%	Below 50%	60% & above	50% to below 60%	Below 50%
1	2	3	4	5	6	7	8	9
30	Tripura Board of Secondary Education	3817	188	398	3231	4.9	10.4	84.6
31	UP Board of High School & Intermediate Education	286071	31227	105964	148880	10.9	37.0	52.0
32	Uttranchal Shiksha Evm Pariksha Parishad	18238	1229	5381	11628	6.7	29.5	63.8
33	West Bengal Board of Secondary Education	149622	Due to implementation of partial grading system Percentage-wise Results not available					
34	Board of Madarsa Education, West Bengal , Kolkata *	417	Percentage-wise Results not maintained for this category					
Total		1611741						

RESULTS OF HIGH SCHOOL EXAMINATION- 2009

Table 12 -Annual and Supplementary Examination Results - Percentage-wise-ST Students

Sl. No.	Name of the Board	Total Number of Students Passed	Out of the Total, Number of Students passed with marks			Percentage of Students passed with marks		
			60% & above	50% to below 60%	Below 50%	60% & above	50% to below 60%	Below 50%
1	2	3	4	5	6	7	8	9
Central Boards								
1	Central Board of Secondary Education, New Delhi	20286	7878	4055	8353	38.8	20.0	41.2
2	Council for the Indian School Certificate Examinations, New Delhi	3328	2610	586	132	78.4	17.6	4.0
State Boards								
3	Board of Secondary Education, Andhra Pradesh	60753	32289	13892	14572	53.1	22.9	24.0
4	Board of Secondary Education Assam	22129	Percentage-wise Results not maintained for this category					
5	Assam Sanskrit Board	888						
6	Banasthali Vidyapith, Rajasthan #	13	4	6	3	30.8	46.2	23.1
7	Bihar School Education Board	6204	1326	1621	3257	21.4	26.1	52.5
8	Bihar State Madrasa Education Board							
9	Chhattisgarh Board of Secondary Education	37080	4508	7764	24808	12.2	20.9	66.9
10	Chhattisgarh Madrasa Board							
11	Chhattisgarh Sanskriti Vidya Mandalam	134	59	43	32	44.0	32.1	23.9
12	Goa Board of Secondary & Higher Secondary Education	550	123	144	283	22.4	26.2	51.5
13	Gujarat Secondary & Higher Secondary Education Board	48898	10663	17295	20940	21.8	35.4	42.8
14	Board of School Education Haryana	129	41	11	77	31.8	8.5	59.7

RESULTS OF HIGH SCHOOL EXAMINATION- 2009

Table 12 -Annual and Supplementary Examination Results - Percentage-wise-ST Students

Sl. No.	Name of the Board	Total Number of Students Passed	Out of the Total, Number of Students passed with marks			Percentage of Students passed with marks		
			60% & above	50% to below 60%	Below 50%	60% & above	50% to below 60%	Below 50%
1	2	3	4	5	6	7	8	9
15	H.P. Board of School Education	4933	702	1519	2712	14.2	30.8	55.0
16	J.K State Board of School Education							
17	Jharkhand Academic Council, Ranchi	51274	11545	18432	21297	22.5	35.9	41.5
18	Karnataka Secondary Education Examination Board	39581	9056	10325	20200	22.9	26.1	51.0
19	Kerala Board of Public Examination	4748	272	381	4095	5.7	8.0	86.2
20	Maharashtra State Board of Secondary & Higher Secondary Education	87207	32784	39461	14962	37.6	45.2	17.2
21	Board of Secondary Education, Madhya Pradesh	40176	4069	11829	24278	10.1	29.4	60.4
22	Board of Secondary Education, Manipur	6410	1605	2267	2538	25.0	35.4	39.6
23	Meghalaya Board of School Education	14770	2216	5805	6749	15.0	39.3	45.7
24	Mizoram Board of School Education	8137	2168	2313	3656	26.6	28.4	44.9
25	Nagaland Board of School Education	9119	1899	2981	4239	20.8	32.7	46.5
26	Board of Secondary Education, Orissa	30729	2125	8224	20380	6.9	26.8	66.3
27	Punjab School Education Board	19846	Percentage-wise Results not awarded					
28	Board of Secondary Education, Rajasthan	75640	11336	19264	45040	15.0	25.5	59.5
29	Tamil Nadu State Board of School Examination	4654	2004	1280	1370	43.1	27.5	29.4

RESULTS OF HIGH SCHOOL EXAMINATION- 2009

Table 12 -Annual and Supplementary Examination Results - Percentage-wise-ST Students

Sl. No.	Name of the Board	Total Number of Students Passed	Out of the Total, Number of Students passed with marks			Percentage of Students passed with marks		
			60% & above	50% to below 60%	Below 50%	60% & above	50% to below 60%	Below 50%
1	2	3	4	5	6	7	8	9
30	Tripura Board of Secondary Education	4244	50	175	4019	1.2	4.1	94.7
31	UP Board of High School & Intermediate Education	8617	480	1784	6353	5.6	20.7	73.7
32	Uttranchal Shiksha Evm Pariksha Parishad	3607	394	1189	2024	10.9	33.0	56.1
33	West Bengal Board of Secondary Education	22652	Due to implementation of partial grading system Percentage-wise Results not available					
34	Board of Madarsa Education, West Bengal , Kolkata *	145	Percentage-wise Results not maintained for this category					
Total		636881						

RESULTS OF HIGH SCHOOL EXAMINATION- 2009

Table 13 - High School Open Examination Board Results

Sl. No.	Name of the Board	Number of Students																	
		All Categories						Scheduled Caste						Scheduled Tribe					
		Appeared			Passed			Appeared			Passed			Appeared			Passed		
		Boys	Girls	Total	Boys	Girls	Total	Boys	Girls	Total	Boys	Girls	Total	Boys	Girls	Total	Boys	Girls	Total
1	2	3	4	5	6	7	8	9	10	11	12	13	14	15	16	17	18	19	20
1	National Institute of Open Schooling, New Delhi	218082	96621	314703	72950	36260	109210	30748	10359	41107	9029	3398	12427	11745	11999	23744	4324	4331	8655
2	A.P. Open School Society, Hyderabad	23191	15313	38504	9612	7409	17021	4944	3230	8174	2034	1609	3643	2454	1675	4129	1053	726	1779
3	Chhattisgarh State Open School	19201	12684	31885	9533	7004	16537	2226	1496	3722	1143	850	1993	5787	4313	10100	2608	2273	4881
4	M.P. State Open School Board of Secondary Education, Bhopal	55334	33922	89256	27755	17765	45520	7353	4217	11570	3635	2168	5803	7506	5458	12964	3635	2760	6395
5	Rajasthan State Open School, Rajasthan	521117	17276	538393	7098	7146	14244	3611	2809	6420	1225	1139	2364	3301	2271	5572	1124	842	1966
6	Rabindra Mukta Vidyalaya (West Bengal State Open School), Kolkata	9964	16716	26680	3779	7305	11084	1866	2748	4614	625	946	1571	1719	1950	3669	373	430	803
Total		846889	192532	1039421	130727	82889	213616	50748	24859	75607	17691	10110	27801	32512	27666	60178	13117	11362	24479

Note: In Open Schooling System, candidates are not classified as 'Regular' or 'Private'.

RESULTS OF HIGH SCHOOL EXAMINATION- 2009

Table 14 -High School Open Examination Board Results - Percentage-wise-All Categories

Sl. No.	Name of the Board	Total Number of Students Passed	Out of the Total, Number of Students passed with marks			Percentage of Students passed with marks		
			60% & above	50% to below 60%	Below 50%	60% & above	50% to below 60%	Below 50%
1	2	3	4	5	6	7	8	9
1	National Institute of Open Schooling, New Delhi	109210	10175	30498	68537	9.3	27.9	62.8
2	A.P. Open School Society, Hyderabad	17021	2261	6973	7787	13.3	41.0	45.7
3	Chhattisgarh State Open School	16537	210	2524	13803	1.3	15.3	83.5
4	M.P. State Open School Board of Secondary Education, Bhopal	45520	7195	26556	11769	15.8	58.3	25.9
5	Rajasthan State Open School, Rajasthan	14244	GRADING SYSTEM					
6	Rabindra Mukta Vidyalaya (West Bengal State Open School), Kolkata	11084	1030	5812	4242	9.3	52.4	38.3
Total		213616						

RESULTS OF HIGH SCHOOL EXAMINATION- 2009

Table 15 -High School Open Examination Board Results - Percentage-wise-SC Students

Sl. No.	Name of the Board	Total Number of Students Passed	Out of the Total, Number of Students passed with marks			Percentage of Students passed with marks		
			60% & above	50% to below 60%	Below 50%	60% & above	50% to below 60%	Below 50%
1	2	3	4	5	6	7	8	9
1	National Institute of Open Schooling, New Delhi	12427	810	3207	8410	6.5	25.8	67.7
2	A.P. Open School Society, Hyderabad	3643	410	1450	1783	11.3	39.8	48.9
3	Chhattisgarh State Open School	1993	30	324	1639	1.5	16.3	82.2
4	M.P. State Open School Board of Secondary Education, Bhopal	5803	778	3423	1602	13.4	59.0	27.6
5	Rajasthan State Open School, Rajasthan	2364	GRADING SYSTEM					
6	Rabindra Mukta Vidyalaya (West Bengal State Open School), Kolkata	1571	79	566	926	5.0	36.0	58.9
Total		27801						

RESULTS OF HIGH SCHOOL EXAMINATION- 2009

Table 16 -High School Open Examination Board Results - Percentage-wise-ST Students

Sl. No.	Name of the Board	Total Number of Students Passed	Out of the Total, Number of Students passed with marks			Percentage of Students passed with marks		
			60% & above	50% to below 60%	Below 50%	60% & above	50% to below 60%	Below 50%
1	2	3	4	5	6	7	8	9
1	National Institute of Open Schooling, New Delhi	8655	714	2433	5508	8.2	28.1	63.6
2	A.P. Open School Society, Hyderabad	1779	174	723	882	9.8	40.6	49.6
3	Chhattisgarh State Open School	4881	41	589	4251	0.8	12.1	87.1
4	M.P. State Open School Board of Secondary Education, Bhopal	6395	621	3684	2090	9.7	57.6	32.7
5	Rajasthan State Open School, Rajasthan	1966	GRADING SYSTEM					
6	Rabindra Mukta Vidyalaya (West Bengal State Open School), Kolkata	803	17	266	520	2.1	33.1	64.8
Total		24479						

Statement 1 - HIGH SCHOOL EXAMINATION RESULTS DURING 2005 - 2009

Year	Number of Students																	
	All Categories						Scheduled Caste						Scheduled Tribe					
	Appeared			Passed			Appeared			Passed			Appeared			Passed		
	Boys	Girls	Total	Boys	Girls	Total	Boys	Girls	Total	Boys	Girls	Total	Boys	Girls	Total	Boys	Girls	Total
2005	8090002	5396738	13486740	4964179	3645676	8609855	1288065	777810	2065875	686378	461759	1148137	405777	256534	662311	194989	124737	319726
2006	8196746	5815061	14011807	5428736	4079333	9508069	1431911	928066	2359977	842860	582173	1425033	478567	310947	789514	254503	164256	418759
2007	8490098	6222331	14712429	5798647	4546040	10344687	1301759	906193	2207952	808748	596255	1405003	510295	348014	858309	282064	193468	475532
2008	8532240	6473905	15006145	5542036	4566928	10108964	1321627	950249	2271876	729564	586372	1315936	562481	404022	966503	329711	235928	565639
2009	9837590	7252068	17089658	6428279	5391410	11819689	1487231	1134667	2621898	898853	740689	1639542	624640	466551	1091191	381086	280274	661360

Statement 2 - HIGH SCHOOL EXAMINATION PASS PERCENTAGE DURING 2005 - 2009

Year	All Categories			Scheduled Caste			Scheduled Tribe		
	Boys	Girls	Total	Boys	Girls	Total	Boys	Girls	Total
2005	61.4	67.6	63.8	53.3	59.4	55.6	48.1	48.6	48.3
2006	66.2	70.2	67.9	58.9	62.7	60.4	53.2	52.8	53.0
2007	68.3	73.1	70.3	62.1	65.8	63.6	55.3	55.6	55.4
2008	65.0	70.5	67.4	55.2	61.7	57.9	58.6	58.4	58.5
2009	65.3	74.3	69.2	60.4	65.3	62.5	61.0	60.1	60.6

PART - III

RESULTS OF HIGHER SECONDARY EXAMINATIONS (Tables & Statements)

RESULTS OF HIGHER SECONDARY EXAMINATION- 2009

Table 1- Annual and Supplementary Examination Results - Regular Students - All Categories

Sl. No.	Name of the Board	Number of Students												Pass %age		
		Appeared			Passed											
					Annual			Supplementary			Annual + Supplementary					
		Boys	Girls	Total	Boys	Girls	Total	Boys	Girls	Total	Boys	Girls	Total	Boys	Girls	Total
1	2	3	4	5	6	7	8	9	10	11	12	13	14	15	16	17
Central Boards																
1	Central Board of Secondary Education, New Delhi	334125	246449	580574	264416	215664	480080	19711	12446	32157	284127	228110	512237	85.0	92.6	88.2
2	Council for the Indian School Certificate Examinations, New Delhi	27939	23000	50939	27101	22652	49753	00	00	00	27101	22652	49753	97.0	98.5	97.7
State Boards																
3	Board of Intermediate Education, Andhra Pradesh	363144	297741	660885	211589	185581	397170	00	00	00	211589	185581	397170	58.3	62.3	60.1
4	Assam Higher Secondary Education Council	67656	62293	129949	50109	46339	96448	00	00	00	50109	46339	96448	74.1	74.4	74.2
5	Banasthali Vidyapith, Rajasthan	24	328	352	24	328	352				24	328	352	100.0	100.0	100.0
6	Bihar Intermediate Education Council	325518	205442	530960	285914	174652	460566	00	00	00	285914	174652	460566	87.8	85.0	86.7
7	Bihar State Madarsa Education Board	20586	27962	48548	15770	20951	36721	00	00	00	15770	20951	36721	76.6	74.9	75.6
8	Chhattisgarh Board of Secondary Education	94921	64276	159197	66829	49651	116480	2613	2000	4613	69442	51651	121093	73.2	80.4	76.1
9	Chhattisgarh Madarsa Board, Chhattisgarh															
10	Chhattisgarh Sanskriti Vidya Mandalam	89	40	129	85	40	125	1		1	86	40	126	96.6	100.0	97.7
11	Goa Board of Secondary & Higher Secondary Education	4704	6027	10731	3346	4865	8211	223	234	457	3569	5099	8668	75.9	84.6	80.8
12	Gujarat Secondary & Higher Secondary Education Board	235059	167554	402613	189941	150166	340107	6760	3314	10074	196701	153480	350181	83.7	91.6	87.0
13	Board of School Education Haryana, Bhiwani	112836	92742	205578	101662	89612	191274				101662	89612	191274	90.1	96.6	93.0
14	H.P. Board of School Education, Dharamshala	38276	36224	74500	26170	26173	52343	5432	4988	10420	31602	31161	62763	82.6	86.0	84.2

RESULTS OF HIGHER SECONDARY EXAMINATION- 2009

Table 1- Annual and Supplementary Examination Results - Regular Students - All Categories

Sl. No.	Name of the Board	Number of Students												Pass %age		
		Appeared			Passed											
					Annual			Supplementary			Annual + Supplementary					
		Boys	Girls	Total	Boys	Girls	Total	Boys	Girls	Total	Boys	Girls	Total	Boys	Girls	Total
1	2	3	4	5	6	7	8	9	10	11	12	13	14	15	16	17
15	J.K State Board of School Education	48621	37418	86039	22759	17525	40284				22759	17525	40284	46.8	46.8	46.8
16	Jharkhand Academic Council, Ranchi	120245	80969	201214	83257	63829	147086	11	6	17	83268	63835	147103	69.2	78.8	73.1
17	Department of Pre-University Education, Karnataka	314530	268641	583171	119467	134541	254008	27066	25438	52504	146533	159979	306512	46.6	59.6	52.6
18	Kerala Board of Higher Secondary Examination	121422	139997	261419	86341	113533	199874				86341	113533	199874	71.1	81.1	76.5
19	Maharashtra State Board of Secondary & Higher Secondary Education	634712	471715	1106427	490284	397042	887326	15276	9104	24380	505560	406146	911706	79.7	86.1	82.4
20	Board of Secondary Education, Madhya Pradesh	196667	119155	315822	122877	87127	210004	26419	15524	41943	149296	102651	251947	75.9	86.1	79.8
21	Council of Higher Secondary Education, Imphal, Manipur	8652	7745	16397	6200	5392	11592	918	743	1661	7118	6135	13253	82.3	79.2	80.8
22	Meghalaya Board of School Education	8324	8627	16951	4744	5383	10127				4744	5383	10127	57.0	62.4	59.7
23	Mizoram Board of School Education	2424	2548	4972	1721	1766	3487				1721	1766	3487	71.0	69.3	70.1
24	Nagaland Board of School Education	4621	4582	9203	3565	3582	7147				3565	3582	7147	77.1	78.2	77.7
25	Council of Higher Secondary Education, Orissa	113572	96227	209799	75841	68382	144223				75841	68382	144223	66.8	71.1	68.7
26	Punjab School Education Board, Mohali	23825	22496	46321	14514	16263	30777				14514	16263	30777	60.9	72.3	66.4
27	Board of Secondary Education, Rajasthan, Ajmer	255650	121274	376924	243252	118639	361891	1446	584	2030	244698	119223	363921	95.7	98.3	96.6
28	Tamil Nadu State Board of School Examination	339694	301764	641458	290122	242168	532290				290122	242168	532290	85.4	80.3	83.0

RESULTS OF HIGHER SECONDARY EXAMINATION- 2009

Table 1- Annual and Supplementary Examination Results - Regular Students - All Categories

Sl. No.	Name of the Board	Number of Students												Pass %age		
		Appeared			Passed											
		Annual			Supplementary			Annual + Supplementary			Boys	Girls	Total			
		Boys	Girls	Total	Boys	Girls	Total	Boys	Girls	Total				Boys	Girls	Total
1	2	3	4	5	6	7	8	9	10	11	12	13	14	15	16	17
29	Tripura Board of Secondary Education	9455	7973	17428	6469	5110	11579				6469	5110	11579	68.4	64.1	66.4
30	Uttar Pradesh Board of High School & Intermediate Education	1109718	809247	1918965	820328	721732	1542060				820328	721732	1542060	73.9	89.2	80.4
31	Uttanchal Shiksha Evm Pariksha Parishad, Ramnagar	39910	38921	78831	28276	31781	60057				28276	31781	60057	70.8	81.7	76.2
32	West Bengal Council of Higher Education, Kolkata	261808	200810	462618	209423	157718	367141				209423	157718	367141	80.0	78.5	79.4
33	Board of Madarsa Education, West Bengal, Kolkata **	636	68	704	524	44	568				524	44	568	82.4	64.7	80.7
Total		5239363	3970255	9209618	3872920	3178231	7051151	105876	74381	180257	3978796	3252612	7231408	75.9	81.9	78.5

** Figures pertain to 'fazil' examination which is equivalent to higher secondary examination.

RESULTS OF HIGHER SECONDARY EXAMINATION- 2009

Table 2 -Annual and Supplementary Examination Results - Private Students - All Categories

Sl. No.	Name of the Board	Number of Students												Pass %age		
		Appeared			Passed											
		Annual			Supplementary			Annual + Supplementary			Boys	Girls	Total			
		Boys	Girls	Total	Boys	Girls	Total	Boys	Girls	Total				Boys	Girls	Total
1	2	3	4	5	6	7	8	9	10	11	12	13	14	15	16	17
Central Boards																
1	Central Board of Secondary Education, New Delhi	20026	11505	31531	9687	6004	15691	1918	1504	3422	11605	7508	19113	57.9	65.3	60.6
2	Council for the Indian School Certificate Examinations, New Delhi	1006	242	1248	749	168	917				749	168	917	74.5	69.4	73.5
State Boards																
3	Board of Intermediate Education, Andhra Pradesh	120191	59478	179669	27015	17117	44132	55882	39434	95316	82897	56551	139448	69.0	95.1	77.6
4	Assam Higher Secondary Education Council	18091	16592	34683	8621	8881	17502				8621	8881	17502	47.7	53.5	50.5
5	Banasthali Vidyapith, Rajasthan															
6	Bihar Intermediate Education Council	23172	28656	51828	19264	22418	41682				19264	22418	41682	83.1	78.2	80.4
7	Bihar State Madarsa Education Board															
8	Chhattisgarh Board of Secondary Education	4955	2676	7631	2509	1612	4121	258	160	418	2767	1772	4539	55.8	66.2	59.5
9	Chhattisgarh Madarsa Board, Chhattisgarh	41	32	73	35	28	63	3		3	38	28	66	92.7	87.5	90.4
10	Chhattisgarh Sanskriti Vidya Mandalam	7	2	9	6	1	7				6	1	7	85.7	50.0	77.8
11	Goa Board of Secondary & Higher Secondary Education	20	9	29	4	1	5				4	1	5	20.0	11.1	17.2
12	Gujarat Secondary & Higher Secondary Education Board	24806	7368	32174	13689	4958	18647	951	304	1255	14640	5262	19902	59.0	71.4	61.9
13	Board of School Education Haryana, Bhiwani	12336	3393	15729	6307	1931	8238				6307	1931	8238	51.1	56.9	52.4
14	H.P. Board of School Education, Dharamshala	8840	6054	14894	3954	2963	6917	1541	941	2482	5495	3904	9399	62.2	64.5	63.1

RESULTS OF HIGHER SECONDARY EXAMINATION- 2009

Table 2 -Annual and Supplementary Examination Results - Private Students - All Categories

Sl. No.	Name of the Board	Number of Students												Pass %age		
		Appeared			Passed											
					Annual			Supplementary			Annual + Supplementary					
		Boys	Girls	Total	Boys	Girls	Total	Boys	Girls	Total	Boys	Girls	Total	Boys	Girls	Total
1	2	3	4	5	6	7	8	9	10	11	12	13	14	15	16	17
15	J.K State Board of School Education	19982	13278	33260	4975	3450	8425	2998	2090	5088	7973	5540	13513	39.9	41.7	40.6
16	Jharkhand Academic Council, Ranchi	28016	12754	40770	16428	8699	25127	14	7	21	16442	8706	25148	58.7	68.3	61.7
17	Department of Pre-University Education, Karnataka	24247	11245	35492	5416	3583	8999	3266	1604	4870	8682	5187	13869	35.8	46.1	39.1
18	Kerala Board of Higher Secondary Examination	46623	42116	88739	14230	20923	35153	32216	27252	59468	46446	48175	94621	99.6	114.4	106.6
19	Maharashtra State Board of Secondary & Higher Secondary Education	40729	15767	56496	19591	8751	28342	1502	632	2134	21093	9383	30476	51.8	59.5	53.9
20	Board of Secondary Education, Madhya Pradesh	28779	13542	42321	7914	4655	12569	4303	2591	6894	12217	7246	19463	42.5	53.5	46.0
21	Council of Higher Secondary Education, Imphal, Manipur	54	42	96	6	11	17	14	10	24	20	21	41	37.0	50.0	42.7
22	Meghalaya Board of School Education	2448	2435	4883	323	335	658				323	335	658	13.2	13.8	13.5
23	Mizoram Board of School Education	1355	959	2314	396	233	629	77	113	190	473	346	819	34.9	36.1	35.4
24	Nagaland Board of School Education	1449	1094	2543	693	568	1261				693	568	1261	47.8	51.9	49.6
25	Council of Higher Secondary Education, Orissa	4058	2779	6837	3079	2208	5287				3079	2208	5287	75.9	79.5	77.3
26	Punjab School Education Board, Mohali	48858	34887	83745	21400	22438	43838	16854	12468	29322	38254	34906	73160	78.3	100.1	87.4
27	Board of Secondary Education, Rajasthan, Ajmer	29671	16713	46384	9184	6072	15256	1586	1179	2765	10770	7251	18021	36.3	43.4	38.9
28	Tamil Nadu State Board of School Examination															

RESULTS OF HIGHER SECONDARY EXAMINATION- 2009

Table 2 -Annual and Supplementary Examination Results - Private Students - All Categories

Sl. No.	Name of the Board	Number of Students												Pass %age		
		Appeared			Passed											
		Annual			Supplementary			Annual + Supplementary			Boys	Girls	Total			
		Boys	Girls	Total	Boys	Girls	Total	Boys	Girls	Total				Boys	Girls	Total
1	2	3	4	5	6	7	8	9	10	11	12	13	14	15	16	17
29	Tripura Board of Secondary Education	1223	802	2025	320	184	504				320	184	504	26.2	22.9	24.9
30	Uttar Pradesh Board of High School & Intermediate Education	102795	40048	142843	66455	31000	97455				66455	31000	97455	64.6	77.4	68.2
31	Uttranchal Shiksha Evm Pariksha Parishad, Ramnagar	5379	2749	8128	2100	1380	3480				2100	1380	3480	39.0	50.2	42.8
32	West Bengal Council of Higher Education, Kolkata															
33	Board of Madarsa Education, West Bengal, Kolkata **	58	7	65	26	5	31				26	5	31	44.8	71.4	47.7
Total		619215	347224	966439	264376	180577	444953	123383	90289	213672	387759	270866	658625	62.6	78.0	68.1

Blank row indicates that there is no provision of examination for private candidates in the Board.

RESULTS OF HIGHER SECONDARY EXAMINATION- 2009

Table 3 -Annual and Supplementary Examination Results - Regular + Private Students - All Categories

Sl. No.	Name of the Board	Number of Students												Pass %age		
		Appeared			Passed											
		Annual			Supplementary			Annual + Supplementary			Boys	Girls	Total			
		Boys	Girls	Total	Boys	Girls	Total	Boys	Girls	Total				Boys	Girls	Total
1	2	3	4	5	6	7	8	9	10	11	12	13	14	15	16	17
Central Boards																
1	Central Board of Secondary Education, New Delhi	354151	257954	612105	274103	221668	495771	21629	13950	35579	295732	235618	531350	83.5	91.3	86.8
2	Council for the Indian School Certificate Examinations, New Delhi	28945	23242	52187	27850	22820	50670				27850	22820	50670	96.2	98.2	97.1
State Boards																
3	Board of Intermediate Education, Andhra Pradesh	483335	357219	840554	238604	202698	441302	55882	39434	95316	294486	242132	536618	60.9	67.8	63.8
4	Assam Higher Secondary Education Council	85747	78885	164632	58730	55220	113950				58730	55220	113950	68.5	70.0	69.2
5	Banasthali Vidyapith, Rajasthan	24	328	352	24	328	352				24	328	352	100.0	100.0	100.0
6	Bihar Intermediate Education Council	348690	234098	582788	305178	197070	502248				305178	197070	502248	87.5	84.2	86.2
7	Bihar State Madarsa Education Board	20586	27962	48548	15770	20951	36721				15770	20951	36721	76.6	74.9	75.6
8	Chhattisgarh Board of Secondary Education	99876	66952	166828	69338	51263	120601	2871	2160	5031	72209	53423	125632	72.3	79.8	75.3
9	Chhatisgarh Madarsa Board, Chhatisgarh	41	32	73	35	28	63	3		3	38	28	66	92.7	87.5	90.4
10	Chhatisgarh Sanskriti Vidya Mandalam	96	42	138	91	41	132	1		1	92	41	133	95.8	97.6	96.4
11	Goa Board of Secondary & Higher Secondary Education	4724	6036	10760	3350	4866	8216	223	234	457	3573	5100	8673	75.6	84.5	80.6
12	Gujarat Secondary & Higher Secondary Education Board	259865	174922	434787	203630	155124	358754	7711	3618	11329	211341	158742	370083	81.3	90.8	85.1
13	Board of School Education Haryana, Bhiwani	125172	96135	221307	107969	91543	199512				107969	91543	199512	86.3	95.2	90.2
14	H.P. Board of School Education, Dharamshala	47116	42278	89394	30124	29136	59260	6973	5929	12902	37097	35065	72162	78.7	82.9	80.7

RESULTS OF HIGHER SECONDARY EXAMINATION- 2009

Table 3 -Annual and Supplementary Examination Results - Regular + Private Students - All Categories

Sl. No.	Name of the Board	Number of Students												Pass %age		
		Appeared			Passed											
					Annual			Supplementary			Annual + Supplementary					
		Boys	Girls	Total	Boys	Girls	Total	Boys	Girls	Total	Boys	Girls	Total	Boys	Girls	Total
1	2	3	4	5	6	7	8	9	10	11	12	13	14	15	16	17
15	J.K State Board of School Education	68603	50696	119299	27734	20975	48709	2998	2090	5088	30732	23065	53797	44.8	45.5	45.1
16	Jharkhand Academic Council, Ranchi	148261	93723	241984	99685	72528	172213	25	13	38	99710	72541	172251	67.3	77.4	71.2
17	Department of Pre-University Education, Karnataka	338777	279886	618663	124883	138124	263007	30332	27042	57374	155215	165166	320381	45.8	59.0	51.8
18	Kerala Board of Higher Secondary Examination	168045	182113	350158	100571	134456	235027	32216	27252	59468	132787	161708	294495	79.0	88.8	84.1
19	Maharashtra State Board of Secondary & Higher Secondary Education	675441	487482	1162923	509875	405793	915668	16778	9736	26514	526653	415529	942182	78.0	85.2	81.0
20	Board of Secondary Education, Madhya Pradesh	225446	132697	358143	130791	91782	222573	30722	18115	48837	161513	109897	271410	71.6	82.8	75.8
21	Council of Higher Secondary Education, Imphal, Manipur	8706	7787	16493	6206	5403	11609	932	753	1685	7138	6156	13294	82.0	79.1	80.6
22	Meghalaya Board of School Education	10772	11062	21834	5067	5718	10785				5067	5718	10785	47.0	51.7	49.4
23	Mizoram Board of School Education	3779	3507	7286	2117	1999	4116	77	113	190	2194	2112	4306	58.1	60.2	59.1
24	Nagaland Board of School Education	6070	5676	11746	4258	4150	8408				4258	4150	8408	70.1	73.1	71.6
25	Council of Higher Secondary Education, Orissa	117630	99006	216636	78920	70590	149510				78920	70590	149510	67.1	71.3	69.0
26	Punjab School Education Board, Mohali	72683	57383	130066	35914	38701	74615	16854	12468	29322	52768	51169	103937	72.6	89.2	79.9
27	Board of Secondary Education, Rajasthan, Ajmer	285321	137987	423308	252436	124711	377147	3032	1763	4795	255468	126474	381942	89.5	91.7	90.2
28	Tamil Nadu State Board of School Examination	339694	301764	641458	290122	242168	532290				290122	242168	532290	85.4	80.3	83.0

RESULTS OF HIGHER SECONDARY EXAMINATION- 2009

Table 3 -Annual and Supplementary Examination Results - Regular + Private Students - All Categories

Sl. No.	Name of the Board	Number of Students												Pass %age		
		Appeared			Passed											
					Annual			Supplementary			Annual + Supplementary					
		Boys	Girls	Total	Boys	Girls	Total	Boys	Girls	Total	Boys	Girls	Total	Boys	Girls	Total
1	2	3	4	5	6	7	8	9	10	11	12	13	14	15	16	17
29	Tripura Board of Secondary Education	10678	8775	19453	6789	5294	12083				6789	5294	12083	63.6	60.3	62.1
30	Uttar Pradesh Board of High School & Intermediate Education	1212513	849295	2061808	886783	752732	1639515				886783	752732	1639515	73.1	88.6	79.5
31	Uttanchal Shiksha Evm Pariksha Parishad, Ramnagar	45289	41670	86959	30376	33161	63537				30376	33161	63537	67.1	79.6	73.1
32	West Bengal Council of Higher Education, Kolkata	261808	200810	462618	209423	157718	367141				209423	157718	367141	80.0	78.5	79.4
33	Board of Madarsa Education, West Bengal, Kolkata **	694	75	769	550	49	599				550	49	599	79.3	65.3	77.9
Total		5858578	4317479	10176057	4137296	3358808	7496104	229259	164670	393929	4366555	3523478	7890033	74.5	81.6	77.5

RESULTS OF HIGHER SECONDARY EXAMINATION- 2009

Table 4 -Annual and Supplementary Examination Results - Regular SC Students

Sl. No.	Name of the Board	Number of Students												Pass %age		
		Appeared			Passed											
					Annual			Supplementary			Annual + Supplementary					
		Boys	Girls	Total	Boys	Girls	Total	Boys	Girls	Total	Boys	Girls	Total	Boys	Girls	Total
1	2	3	4	5	6	7	8	9	10	11	12	13	14	15	16	17
Central Boards																
1	Central Board of Secondary Education, New Delhi	19370	14987	34357	15622	12989	28611	1180	897	2077	16802	13886	30688	86.7	92.7	89.3
2	Council for the Indian School Certificate Examinations, New Delhi	600	365	965	565	347	912				565	347	912	94.2	95.1	94.5
State Boards																
3	Board of Intermediate Education, Andhra Pradesh	57825	49306	107131	25751	23844	49595				25751	23844	49595	44.5	48.4	46.3
4	Assam Higher Secondary Education Council	5230	4466	9696	3156	2750	5906				3156	2750	5906	60.3	61.6	60.9
5	Banasthali Vidyapith, Rajasthan	1	10	11	1	10	11				1	10	11	100.0	100.0	100.0
6	Bihar Intermediate Education Council	32911	14671	47582	27727	11423	39150				27727	11423	39150	84.2	77.9	82.3
7	Bihar State Madarsa Education Board															
8	Chhattisgarh Board of Secondary Education	14296	9199	23495	8765	6213	14978	350	260	610	9115	6473	15588	63.8	70.4	66.3
9	Chhatisgarh Madarsa Board, Chhatisgarh															
10	Chhatisgarh Sanskriti Vidya Mandalam															
11	Goa Board of Secondary & Higher Secondary Education	44	65	109	30	53	83	2	1	3	32	54	86	72.7	83.1	78.9
12	Gujarat Secondary & Higher Secondary Education Board	18971	12758	31729	14648	11094	25742	666	305	971	15314	11399	26713	80.7	89.3	84.2
13	Board of School Education Haryana, Bhiwani	16944	12064	29008	14918	11395	26313				14918	11395	26313	88.0	94.5	90.7
14	H.P. Board of School Education, Dharamshala	7799	7109	14908	5221	5024	10245	1170	1010	2180	6391	6034	12425	81.9	84.9	83.3

RESULTS OF HIGHER SECONDARY EXAMINATION- 2009

Table 4 -Annual and Supplementary Examination Results - Regular SC Students

Sl. No.	Name of the Board	Number of Students												Pass %age			
		Appeared			Passed												
		Annual			Supplementary			Annual + Supplementary			Boys	Girls	Total				
		Boys	Girls	Total	Boys	Girls	Total	Boys	Girls	Total				Boys	Girls	Total	
1	2	3	4	5	6	7	8	9	10	11	12	13	14	15	16	17	
15	J.K State Board of School Education																
16	Jharkhand Academic Council, Ranchi	12181	5924	18105	8265	4476	12741		1	1	8265	4477	12742	67.9	75.6	70.4	
17	Department of Pre-University Education, Karnataka	60697	45318	106015	16940	16131	33071	5293	4681	9974	22233	20812	43045	36.6	45.9	40.6	
18	Kerala Board of Higher Secondary Examination	10984	14124	25108	5371	8078	13449				5371	8078	13449	48.9	57.2	53.6	
19	Maharashtra State Board of Secondary & Higher Secondary Education	92295	68023	160318	66474	52764	119238	2521	1704	4225	68995	54468	123463	74.8	80.1	77.0	
20	Board of Secondary Education, Madhya Pradesh	28776	14519	43295	15895	9775	25670	4063	2123	6186	19958	11898	31856	69.4	81.9	73.6	
21	Council of Higher Secondary Education, Imphal, Manipur	238	273	511	170	215	385	24	23	47	194	238	432	81.5	87.2	84.5	
22	Meghalaya Board of School Education	93	73	166	62	47	109				62	47	109	66.7	64.4	65.7	
23	Mizoram Board of School Education	6	8	14	6	8	14				6	8	14	100.0	100.0	100.0	
24	Nagaland Board of School Education	62	57	119	52	38	90				52	38	90	83.9	66.7	75.6	
25	Council of Higher Secondary Education, Orissa	13310	9533	22843	8234	6129	14363				8234	6129	14363	61.9	64.3	62.9	
26	Punjab School Education Board, Mohali	9127	8340	17467	5606	5994	11600				5606	5994	11600	61.4	71.9	66.4	
27	Board of Secondary Education, Rajasthan, Ajmer	33437	12860	46297	31865	12542	44407	216	74	290	32081	12616	44697	95.9	98.1	96.5	
28	Tamil Nadu State Board of School Examination	64463	72319	136782	45318	54922	100240				45318	54922	100240	70.3	75.9	73.3	

RESULTS OF HIGHER SECONDARY EXAMINATION- 2009

Table 4 -Annual and Supplementary Examination Results - Regular SC Students

Sl. No.	Name of the Board	Number of Students												Pass %age		
		Appeared			Passed											
					Annual			Supplementary			Annual + Supplementary					
		Boys	Girls	Total	Boys	Girls	Total	Boys	Girls	Total	Boys	Girls	Total	Boys	Girls	Total
1	2	3	4	5	6	7	8	9	10	11	12	13	14	15	16	17
29	Tripura Board of Secondary Education	1794	1382	3176	1222	840	2062				1222	840	2062	68.1	60.8	64.9
30	Uttar Pradesh Board of High School & Intermediate Education	188539	124227	312766	134166	108218	242384				134166	108218	242384	71.2	87.1	77.5
31	Uttanchal Shiksha Evm Pariksha Parishad, Ramnagar	6261	5034	11295	4199	4004	8203				4199	4004	8203	67.1	79.5	72.6
32	West Bengal Council of Higher Education, Kolkata	54999	33948	88947	41319	24233	65552				41319	24233	65552	75.1	71.4	73.7
33	Board of Madarsa Education, West Bengal, Kolkata **															
Total		751253	540962	1292215	501568	393556	895124	15485	11079	26564	517053	404635	921688	68.8	74.8	71.3

RESULTS OF HIGHER SECONDARY EXAMINATION- 2009

Table 5 - Annual and Supplementary Examination Results - Private SC Students

Sl. No.	Name of the Board	Number of Students												Pass %age		
		Appeared			Passed											
					Annual			Supplementary			Annual + Supplementary					
		Boys	Girls	Total	Boys	Girls	Total	Boys	Girls	Total	Boys	Girls	Total	Boys	Girls	Total
1	2	3	4	5	6	7	8	9	10	11	12	13	14	15	16	17
Central Boards																
1	Central Board of Secondary Education, New Delhi	962	894	1856	468	399	867	114	125	239	582	524	1106	60.5	58.6	59.6
2	Council for the Indian School Certificate Examinations, New Delhi	32	10	42	21	6	27				21	6	27	65.6	60.0	64.3
State Boards																
3	Board of Intermediate Education, Andhra Pradesh	29304	16258	45562	5509	4057	9566	10335	7923	18258	15844	11980	27824	54.1	73.7	61.1
4	Assam Higher Secondary Education Council	1695	1256	2951	1321	731	2052				1321	731	2052	77.9	58.2	69.5
5	Banasthali Vidyapith, Rajasthan															
6	Bihar Intermediate Education Council	2467	2241	4708	1985	1621	3606				1985	1621	3606	80.5	72.3	76.6
7	Bihar State Madarsa Education Board															
8	Chhattisgarh Board of Secondary Education	715	329	1044	372	201	573	28	18	46	400	219	619	55.9	66.6	59.3
9	Chhatisgarh Madarsa Board, Chhatisgarh															
10	Chhatisgarh Sanskriti Vidya Mandalam															
11	Goa Board of Secondary & Higher Secondary Education	1		1												
12	Gujarat Secondary & Higher Secondary Education Board	2677	725	3402	1297	443	1740	92	44	136	1389	487	1876	51.9	67.2	55.1
13	Board of School Education Haryana, Bhiwani	1840	539	2379	876	315	1191				876	315	1191	47.6	58.4	50.1
14	H.P. Board of School Education, Dharamshala	1762	843	2605	730	486	1216	254	150	404	984	636	1620	55.8	75.4	62.2

RESULTS OF HIGHER SECONDARY EXAMINATION- 2009

Table 5 -Annual and Supplementary Examination Results - Private SC Students

Sl. No.	Name of the Board	Number of Students												Pass %age			
		Appeared			Passed												
					Annual			Supplementary			Annual + Supplementary						
		Boys	Girls	Total	Boys	Girls	Total	Boys	Girls	Total	Boys	Girls	Total	Boys	Girls	Total	
1	2	3	4	5	6	7	8	9	10	11	12	13	14	15	16	17	
15	J.K State Board of School Education																
16	Jharkhand Academic Council, Ranchi	5	3	8	2		2	2		2	4		4	80.0		50.0	
17	Department of Pre-University Education, Karnataka	4047	1763	5810	647	348	995	544	248	792	1191	596	1787	29.4	33.8	30.8	
18	Kerala Board of Higher Secondary Examination	1523	1900	3423	231	524	755	2525	2814	5339	2756	3338	6094	181.0	175.7	178.0	
19	Maharashtra State Board of Secondary & Higher Secondary Education	5096	2312	7408	2529	709	3238	203	106	309	2732	815	3547	53.6	35.3	47.9	
20	Board of Secondary Education, Madhya Pradesh	5154	2156	7310	1319	652	1971	730	402	1132	2049	1054	3103	39.8	48.9	42.4	
21	Council of Higher Secondary Education, Imphal, Manipur	1		1													
22	Meghalaya Board of School Education	22	19	41	2	5	7				2	5	7	9.1	26.3	17.1	
23	Mizoram Board of School Education	3	3	6	3	3	6				3	3	6	100.0	100.0	100.0	
24	Nagaland Board of School Education	16	8	24	9	6	15				9	6	15	56.3	75.0	62.5	
25	Council of Higher Secondary Education, Orissa	451	240	691	343	179	522				343	179	522	76.1	74.6	75.5	
26	Punjab School Education Board, Mohali	4165	3244	7409	1407	1512	2919	3204	2558	5762	4611	4070	8681	110.7	125.5	117.2	
27	Board of Secondary Education, Rajasthan, Ajmer	5073	2280	7353	1411	720	2131	247	176	423	1658	896	2554	32.7	39.3	34.7	
28	Tamil Nadu State Board of School Examination																

RESULTS OF HIGHER SECONDARY EXAMINATION- 2009

Table 5 -Annual and Supplementary Examination Results - Private SC Students

Sl. No.	Name of the Board	Number of Students												Pass %age		
		Appeared			Passed											
		Annual			Supplementary			Annual + Supplementary			Boys	Girls	Total			
		Boys	Girls	Total	Boys	Girls	Total	Boys	Girls	Total				Boys	Girls	Total
1	2	3	4	5	6	7	8	9	10	11	12	13	14	15	16	17
29	Tripura Board of Secondary Education	195	113	308	52	25	77				52	25	77	26.7	22.1	25.0
30	Uttar Pradesh Board of High School & Intermediate Education	14715	5262	19977	7925	3488	11413				7925	3488	11413	53.9	66.3	57.1
31	Uttanchal Shiksha Evm Pariksha Parishad, Ramnagar	1021	473	1494	372	222	594				372	222	594	36.4	46.9	39.8
32	West Bengal Council of Higher Education, Kolkata															
33	Board of Madarsa Education, West Bengal, Kolkata **															
Total		82942	42871	125813	28831	16652	45483	18278	14564	32842	47109	31216	78325	56.8	72.8	62.3

Blank row indicates that there is no provision of examination for private candidates in the Board.

RESULTS OF HIGHER SECONDARY EXAMINATION- 2009

Table 6 -Annual and Supplementary Examination Results - Regular + Private SC Students

Sl. No.	Name of the Board	Number of Students												Pass %age		
		Appeared			Passed											
					Annual			Supplementary			Annual + Supplementary					
		Boys	Girls	Total	Boys	Girls	Total	Boys	Girls	Total	Boys	Girls	Total	Boys	Girls	Total
1	2	3	4	5	6	7	8	9	10	11	12	13	14	15	16	17
Central Boards																
1	Central Board of Secondary Education, New Delhi	20332	15881	36213	16090	13388	29478	1294	1022	2316	17384	14410	31794	85.5	90.7	87.8
2	Council for the Indian School Certificate Examinations, New Delhi	632	375	1007	586	353	939				586	353	939	92.7	94.1	93.2
State Boards																
3	Board of Intermediate Education, Andhra Pradesh	87129	65564	152693	31260	27901	59161	10335	7923	18258	41595	35824	77419	47.7	54.6	50.7
4	Assam Higher Secondary Education Council	6925	5722	12647	4477	3481	7958				4477	3481	7958	64.6	60.8	62.9
5	Banasthali Vidyapith, Rajasthan	1	10	11	1	10	11				1	10	11	100.0	100.0	100.0
6	Bihar Intermediate Education Council	35378	16912	52290	29712	13044	42756				29712	13044	42756	84.0	77.1	81.8
7	Bihar State Madarsa Education Board															
8	Chhattisgarh Board of Secondary Education	15011	9528	24539	9137	6414	15551	378	278	656	9515	6692	16207	63.4	70.2	66.0
9	Chhatisgarh Madarsa Board, Chhatisgarh															
10	Chhatisgarh Sanskriti Vidya Mandalam															
11	Goa Board of Secondary & Higher Secondary Education	45	65	110	30	53	83	2	1	3	32	54	86	71.1	83.1	78.2
12	Gujarat Secondary & Higher Secondary Education Board	21648	13483	35131	15945	11537	27482	758	349	1107	16703	11886	28589	77.2	88.2	81.4
13	Board of School Education Haryana, Bhiwani	18784	12603	31387	15794	11710	27504				15794	11710	27504	84.1	92.9	87.6
14	H.P. Board of School Education, Dharamshala	9561	7952	17513	5951	5510	11461	1424	1160	2584	7375	6670	14045	77.1	83.9	80.2

RESULTS OF HIGHER SECONDARY EXAMINATION- 2009

Table 6 -Annual and Supplementary Examination Results - Regular + Private SC Students

Sl. No.	Name of the Board	Number of Students												Pass %age			
		Appeared			Passed												
		Annual			Supplementary			Annual + Supplementary			Boys	Girls	Total				
		Boys	Girls	Total	Boys	Girls	Total	Boys	Girls	Total				Boys	Girls	Total	
1	2	3	4	5	6	7	8	9	10	11	12	13	14	15	16	17	
15	J.K State Board of School Education																
16	Jharkhand Academic Council, Ranchi	12186	5927	18113	8267	4476	12743	2	1	3	8269	4477	12746	67.9	75.5	70.4	
17	Department of Pre-University Education, Karnataka	64744	47081	111825	17587	16479	34066	5837	4929	10766	23424	21408	44832	36.2	45.5	40.1	
18	Kerala Board of Higher Secondary Examination	12507	16024	28531	5602	8602	14204	2525	2814	5339	8127	11416	19543	65.0	71.2	68.5	
19	Maharashtra State Board of Secondary & Higher Secondary Education	97391	70335	167726	69003	53473	122476	2724	1810	4534	71727	55283	127010	73.6	78.6	75.7	
20	Board of Secondary Education, Madhya Pradesh	33930	16675	50605	17214	10427	27641	4793	2525	7318	22007	12952	34959	64.9	77.7	69.1	
21	Council of Higher Secondary Education, Imphal, Manipur	239	273	512	170	215	385	24	23	47	194	238	432	81.2	87.2	84.4	
22	Meghalaya Board of School Education	115	92	207	64	52	116				64	52	116	55.7	56.5	56.0	
23	Mizoram Board of School Education	9	11	20	9	11	20				9	11	20	100.0	100.0	100.0	
24	Nagaland Board of School Education	78	65	143	61	44	105				61	44	105	78.2	67.7	73.4	
25	Council of Higher Secondary Education, Orissa	13761	9773	23534	8577	6308	14885				8577	6308	14885	62.3	64.5	63.2	
26	Punjab School Education Board, Mohali	13292	11584	24876	7013	7506	14519	3204	2558	5762	10217	10064	20281	76.9	86.9	81.5	
27	Board of Secondary Education, Rajasthan, Ajmer	38510	15140	53650	33276	13262	46538	463	250	713	33739	13512	47251	87.6	89.2	88.1	
28	Tamil Nadu State Board of School Examination	64463	72319	136782	45318	54922	100240				45318	54922	100240	70.3	75.9	73.3	

RESULTS OF HIGHER SECONDARY EXAMINATION- 2009

Table 6 -Annual and Supplementary Examination Results - Regular + Private SC Students

Sl. No.	Name of the Board	Number of Students												Pass %age		
		Appeared			Passed											
		Annual			Supplementary			Annual + Supplementary			Boys	Girls	Total			
		Boys	Girls	Total	Boys	Girls	Total	Boys	Girls	Total				Boys	Girls	Total
1	2	3	4	5	6	7	8	9	10	11	12	13	14	15	16	17
29	Tripura Board of Secondary Education	1989	1495	3484	1274	865	2139				1274	865	2139	64.1	57.9	61.4
30	Uttar Pradesh Board of High School & Intermediate Education	203254	129489	332743	142091	111706	253797				142091	111706	253797	69.9	86.3	76.3
31	Uttanchal Shiksha Evm Pariksha Parishad, Ramnagar	7282	5507	12789	4571	4226	8797				4571	4226	8797	62.8	76.7	68.8
32	West Bengal Council of Higher Education, Kolkata	54999	33948	88947	41319	24233	65552				41319	24233	65552	75.1	71.4	73.7
33	Board of Madarsa Education, West Bengal, Kolkata **															
Total		834195	583833	1418028	530399	410208	940607	33763	25643	59406	564162	435851	1000013	67.6	74.7	70.5

RESULTS OF HIGHER SECONDARY EXAMINATION- 2009

Table 7 -Annual and Supplementary Examination Results - Regular ST Students

Sl. No.	Name of the Board	Number of Students												Pass %age		
		Appeared			Passed											
					Annual			Supplementary			Annual + Supplementary					
		Boys	Girls	Total	Boys	Girls	Total	Boys	Girls	Total	Boys	Girls	Total	Boys	Girls	Total
1	2	3	4	5	6	7	8	9	10	11	12	13	14	15	16	17
Central Boards																
1	Central Board of Secondary Education, New Delhi	9449	7375	16824	6220	4939	11159	872	836	1708	7092	5775	12867	75.1	78.3	76.5
2	Council for the Indian School Certificate Examinations, New Delhi	637	724	1361	614	707	1321				614	707	1321	96.4	97.7	97.1
State Boards																
3	Board of Intermediate Education, Andhra Pradesh	22815	14554	37369	10035	6382	16417				10035	6382	16417	44.0	43.9	43.9
4	Assam Higher Secondary Education Council	7755	6261	14016	3469	2730	6199				3469	2730	6199	44.7	43.6	44.2
5	Banasthali Vidyapith, Rajasthan	1	17	18	1	17	18				1	17	18	100.0	100.0	100.0
6	Bihar Intermediate Education Council	3819	1927	5746	3178	1585	4763				3178	1585	4763	83.2	82.3	82.9
7	Bihar State Madarsa Education Board															
8	Chhattisgarh Board of Secondary Education	21333	13209	34542	15278	9948	25226	589	432	1021	15867	10380	26247	74.4	78.6	76.0
9	Chhatisgarh Madarsa Board, Chhatisgarh															
10	Chhatisgarh Sanskriti Vidya Mandalam	42	37	79	42	36	78				42	36	78	100.0	97.3	98.7
11	Goa Board of Secondary & Higher Secondary Education	254	285	539	142	195	337	16	13	29	158	208	366	62.2	73.0	67.9
12	Gujarat Secondary & Higher Secondary Education Board	26707	19964	46671	20016	15747	35763	860	504	1364	20876	16251	37127	78.2	81.4	79.6
13	Board of School Education Haryana, Bhiwani	49	16	65	42	14	56				42	14	56	85.7	87.5	86.2
14	H.P. Board of School Education, Dharamshala	2103	1791	3894	1372	1201	2573	305	265	570	1677	1466	3143	79.7	81.9	80.7

RESULTS OF HIGHER SECONDARY EXAMINATION- 2009

Table 7 -Annual and Supplementary Examination Results - Regular ST Students

Sl. No.	Name of the Board	Number of Students												Pass %age			
		Appeared			Passed												
					Annual			Supplementary			Annual + Supplementary						
		Boys	Girls	Total	Boys	Girls	Total	Boys	Girls	Total	Boys	Girls	Total	Boys	Girls	Total	
1	2	3	4	5	6	7	8	9	10	11	12	13	14	15	16	17	
15	J.K State Board of School Education																
16	Jharkhand Academic Council, Ranchi	23002	17604	40606	15708	13588	29296				15708	13588	29296	68.3	77.2	72.1	
17	Department of Pre-University Education, Karnataka	19829	13096	32925	5742	5160	10902	1803	1327	3130	7545	6487	14032	38.1	49.5	42.6	
18	Kerala Board of Higher Secondary Examination	1384	1650	3034	550	855	1405				550	855	1405	39.7	51.8	46.3	
19	Maharashtra State Board of Secondary & Higher Secondary Education	34578	21591	56169	27254	17139	44393	705	409	1114	27959	17548	45507	80.9	81.3	81.0	
20	Board of Secondary Education, Madhya Pradesh	17954	9177	27131	9794	5676	15470	2842	1545	4387	12636	7221	19857	70.4	78.7	73.2	
21	Council of Higher Secondary Education, Imphal, Manipur	3459	3303	6762	2433	2371	4804	355	298	653	2788	2669	5457	80.6	80.8	80.7	
22	Meghalaya Board of School Education	7106	7704	14810	4010	4773	8783				4010	4773	8783	56.4	62.0	59.3	
23	Mizoram Board of School Education	2387	2508	4895	1691	1744	3435				1691	1744	3435	70.8	69.5	70.2	
24	Nagaland Board of School Education	4172	4215	8387	3189	3313	6502				3189	3313	6502	76.4	78.6	77.5	
25	Council of Higher Secondary Education, Orissa	13721	10170	23891	7964	6000	13964				7964	6000	13964	58.0	59.0	58.4	
26	Punjab School Education Board, Mohali	25	15	40	19	8	27				19	8	27	76.0	53.3	67.5	
27	Board of Secondary Education, Rajasthan, Ajmer	25059	10061	35120	23341	9466	32807	292	121	413	23633	9587	33220	94.3	95.3	94.6	
28	Tamil Nadu State Board of School Examination	2111	1651	3762	1545	1188	2733				1545	1188	2733	73.2	72.0	72.6	

RESULTS OF HIGHER SECONDARY EXAMINATION- 2009

Table 7 -Annual and Supplementary Examination Results - Regular ST Students

Sl. No.	Name of the Board	Number of Students												Pass %age		
		Appeared			Passed											
					Annual			Supplementary			Annual + Supplementary					
		Boys	Girls	Total	Boys	Girls	Total	Boys	Girls	Total	Boys	Girls	Total	Boys	Girls	Total
1	2	3	4	5	6	7	8	9	10	11	12	13	14	15	16	17
29	Tripura Board of Secondary Education	2293	1632	3925	1073	652	1725				1073	652	1725	46.8	40.0	43.9
30	Uttar Pradesh Board of High School & Intermediate Education	5642	3224	8866	4034	2828	6862				4034	2828	6862	71.5	87.7	77.4
31	Uttanchal Shiksha Evm Pariksha Parishad, Ramnagar	1587	1425	3012	1043	1118	2161				1043	1118	2161	65.7	78.5	71.7
32	West Bengal Council of Higher Education, Kolkata	9474	4420	13894	6280	2960	9240				6280	2960	9240	66.3	67.0	66.5
33	Board of Madarsa Education, West Bengal, Kolkata **															
Total		268747	179606	448353	176079	122340	298419	8639	5750	14389	184718	128090	312808	68.7	71.3	69.8

RESULTS OF HIGHER SECONDARY EXAMINATION- 2009

Table 8 - Annual and Supplementary Examination Results - Private ST Students

Sl. No.	Name of the Board	Number of Students												Pass %age		
		Appeared			Passed											
					Annual			Supplementary			Annual + Supplementary					
		Boys	Girls	Total	Boys	Girls	Total	Boys	Girls	Total	Boys	Girls	Total	Boys	Girls	Total
1	2	3	4	5	6	7	8	9	10	11	12	13	14	15	16	17
Central Boards																
1	Central Board of Secondary Education, New Delhi	649	418	1067	288	201	489	72	66	138	360	267	627	55.5	63.9	58.8
2	Council for the Indian School Certificate Examinations, New Delhi	35	10	45	26	6	32				26	6	32	74.3	60.0	71.1
State Boards																
3	Board of Intermediate Education, Andhra Pradesh	11540	6151	17691	2156	1299	3455	4538	2728	7266	6694	4027	10721	58.0	65.5	60.6
4	Assam Higher Secondary Education Council	4005	3819	7824	2694	1819	4513				2694	1819	4513	67.3	47.6	57.7
5	Banasthali Vidyapith, Rajasthan															
6	Bihar Intermediate Education Council	355	379	734	283	263	546				283	263	546	79.7	69.4	74.4
7	Bihar State Madarsa Education Board															
8	Chhattisgarh Board of Secondary Education	1408	789	2197	687	422	1109	66	44	110	753	466	1219	53.5	59.1	55.5
9	Chhatisgarh Madarsa Board, Chhatisgarh															
10	Chhatisgarh Sanskriti Vidya Mandalam															
11	Goa Board of Secondary & Higher Secondary Education															
12	Gujarat Secondary & Higher Secondary Education Board	1782	340	2122	1320	189	1509	37	12	49	1357	201	1558	76.2	59.1	73.4
13	Board of School Education Haryana, Bhiwani	24	7	31	11	4	15				11	4	15	45.8	57.1	48.4
14	H.P. Board of School Education, Dharamshala	635	470	1105	305	226	531	80	60	140	385	286	671	60.6	60.9	60.7

RESULTS OF HIGHER SECONDARY EXAMINATION- 2009

Table 8 - Annual and Supplementary Examination Results - Private ST Students

Sl. No.	Name of the Board	Number of Students												Pass %age			
		Appeared			Passed												
					Annual			Supplementary			Annual + Supplementary						
		Boys	Girls	Total	Boys	Girls	Total	Boys	Girls	Total	Boys	Girls	Total	Boys	Girls	Total	
1	2	3	4	5	6	7	8	9	10	11	12	13	14	15	16	17	
15	J.K State Board of School Education																
16	Jharkhand Academic Council, Ranchi	6468	3526	9994	3672	2233	5905	1	2	3	3673	2235	5908	56.8	63.4	59.1	
17	Department of Pre-University Education, Karnataka	1111	493	1604	177	136	313	145	63	208	322	199	521	29.0	40.4	32.5	
18	Kerala Board of Higher Secondary Examination	193	220	413	34	70	104	343	381	724	377	451	828	195.3	205.0	200.5	
19	Maharashtra State Board of Secondary & Higher Secondary Education	1557	675	2232	827	438	1265	62	26	88	889	464	1353	57.1	68.7	60.6	
20	Board of Secondary Education, Madhya Pradesh	4091	1556	5647	781	383	1164	567	266	833	1348	649	1997	33.0	41.7	35.4	
21	Council of Higher Secondary Education, Imphal, Manipur	26	14	40	3	2	5	9	2	11	12	4	16	46.2	28.6	40.0	
22	Meghalaya Board of School Education	2309	2345	4654	294	324	618				294	324	618	12.7	13.8	13.3	
23	Mizoram Board of School Education	1243	864	2107	351	246	597	76	111	187	427	357	784	34.4	41.3	37.2	
24	Nagaland Board of School Education	1355	1033	2388	637	535	1172				637	535	1172	47.0	51.8	49.1	
25	Council of Higher Secondary Education, Orissa	506	291	797	391	240	631				391	240	631	77.3	82.5	79.2	
26	Punjab School Education Board, Mohali	9	11	20	3	5	8	9	7	16	12	12	24	133.3	109.1	120.0	
27	Board of Secondary Education, Rajasthan, Ajmer	2799	1317	4116	632	294	926	148	71	219	780	365	1145	27.9	27.7	27.8	
28	Tamil Nadu State Board of School Examination																

RESULTS OF HIGHER SECONDARY EXAMINATION- 2009

Table 8 -Annual and Supplementary Examination Results - Private ST Students

Sl. No.	Name of the Board	Number of Students												Pass %age		
		Appeared			Passed											
		Annual			Supplementary			Annual + Supplementary			Boys	Girls	Total			
		Boys	Girls	Total	Boys	Girls	Total	Boys	Girls	Total				Boys	Girls	Total
1	2	3	4	5	6	7	8	9	10	11	12	13	14	15	16	17
29	Tripura Board of Secondary Education	491	372	863	109	75	184				109	75	184	22.2	20.2	21.3
30	Uttar Pradesh Board of High School & Intermediate Education	191	138	329	78	81	159				78	81	159	40.8	58.7	48.3
31	Uttanchal Shiksha Evm Pariksha Parishad, Ramnagar	428	144	572	120	74	194				120	74	194	28.0	51.4	33.9
32	West Bengal Council of Higher Education, Kolkata															
33	Board of Madarsa Education, West Bengal, Kolkata **															
Total		43210	25382	68592	15879	9565	25444	6153	3839	9992	22032	13404	35436	51.0	52.8	51.7

Blank row indicates that there is no provision of examination for private candidates in the Board.

RESULTS OF HIGHER SECONDARY EXAMINATION- 2009

Table 9 - Annual and Supplementary Examination Results - Regular + Private ST Students

Sl. No.	Name of the Board	Number of Students												Pass %age		
		Appeared			Passed											
					Annual			Supplementary			Annual + Supplementary					
		Boys	Girls	Total	Boys	Girls	Total	Boys	Girls	Total	Boys	Girls	Total	Boys	Girls	Total
1	2	3	4	5	6	7	8	9	10	11	12	13	14	15	16	17
Central Boards																
1	Central Board of Secondary Education, New Delhi	10098	7793	17891	6508	5140	11648	944	902	1846	7452	6042	13494	73.8	77.5	75.4
2	Council for the Indian School Certificate Examinations, New Delhi	672	734	1406	640	713	1353				640	713	1353	95.2	97.1	96.2
State Boards																
3	Board of Intermediate Education, Andhra Pradesh	34355	20705	55060	12191	7681	19872	4538	2728	7266	16729	10409	27138	48.7	50.3	49.3
4	Assam Higher Secondary Education Council	11760	10080	21840	6163	4549	10712				6163	4549	10712	52.4	45.1	49.0
5	Banasthali Vidyapith, Rajasthan	1	17	18	1	17	18				1	17	18	100.0	100.0	100.0
6	Bihar Intermediate Education Council	4174	2306	6480	3461	1848	5309				3461	1848	5309	82.9	80.1	81.9
7	Bihar State Madarsa Education Board															
8	Chhattisgarh Board of Secondary Education	22741	13998	36739	15965	10370	26335	655	476	1131	16620	10846	27466	73.1	77.5	74.8
9	Chhatisgarh Madarsa Board, Chhatisgarh															
10	Chhatisgarh Sanskriti Vidya Mandalam	42	37	79	42	36	78				42	36	78	100.0	97.3	98.7
11	Goa Board of Secondary & Higher Secondary Education	254	285	539	142	195	337	16	13	29	158	208	366	62.2	73.0	67.9
12	Gujarat Secondary & Higher Secondary Education Board	28489	20304	48793	21336	15936	37272	897	516	1413	22233	16452	38685	78.0	81.0	79.3
13	Board of School Education Haryana, Bhiwani	73	23	96	53	18	71				53	18	71	72.6	78.3	74.0
14	H.P. Board of School Education, Dharamshala	2738	2261	4999	1677	1427	3104	385	325	710	2062	1752	3814	75.3	77.5	76.3

RESULTS OF HIGHER SECONDARY EXAMINATION- 2009

Table 9 - Annual and Supplementary Examination Results - Regular + Private ST Students

Sl. No.	Name of the Board	Number of Students												Pass %age		
		Appeared			Passed											
		Annual			Supplementary			Annual + Supplementary			Boys	Girls	Total			
		Boys	Girls	Total	Boys	Girls	Total	Boys	Girls	Total				Boys	Girls	Total
1	2	3	4	5	6	7	8	9	10	11	12	13	14	15	16	17
15	J.K State Board of School Education															
16	Jharkhand Academic Council, Ranchi	29470	21130	50600	19380	15821	35201	1	2	3	19381	15823	35204	65.8	74.9	69.6
17	Department of Pre-University Education, Karnataka	20940	13589	34529	5919	5296	11215	1948	1390	3338	7867	6686	14553	37.6	49.2	42.1
18	Kerala Board of Higher Secondary Examination	1577	1870	3447	584	925	1509	343	381	724	927	1306	2233	58.8	69.8	64.8
19	Maharashtra State Board of Secondary & Higher Secondary Education	36135	22266	58401	28081	17577	45658	767	435	1202	28848	18012	46860	79.8	80.9	80.2
20	Board of Secondary Education, Madhya Pradesh	22045	10733	32778	10575	6059	16634	3409	1811	5220	13984	7870	21854	63.4	73.3	66.7
21	Council of Higher Secondary Education, Imphal, Manipur	3485	3317	6802	2436	2373	4809	364	300	664	2800	2673	5473	80.3	80.6	80.5
22	Meghalaya Board of School Education	9415	10049	19464	4304	5097	9401				4304	5097	9401	45.7	50.7	48.3
23	Mizoram Board of School Education	3630	3372	7002	2042	1990	4032	76	111	187	2118	2101	4219	58.3	62.3	60.3
24	Nagaland Board of School Education	5527	5248	10775	3826	3848	7674				3826	3848	7674	69.2	73.3	71.2
25	Council of Higher Secondary Education, Orissa	14227	10461	24688	8355	6240	14595				8355	6240	14595	58.7	59.7	59.1
26	Punjab School Education Board, Mohali	34	26	60	22	13	35	9	7	16	31	20	51	91.2	76.9	85.0
27	Board of Secondary Education, Rajasthan, Ajmer	27858	11378	39236	23973	9760	33733	440	192	632	24413	9952	34365	87.6	87.5	87.6
28	Tamil Nadu State Board of School Examination	2111	1651	3762	1545	1188	2733				1545	1188	2733	73.2	72.0	72.6

RESULTS OF HIGHER SECONDARY EXAMINATION- 2009

Table 9 -Annual and Supplementary Examination Results - Regular + Private ST Students

Sl. No.	Name of the Board	Number of Students												Pass %age		
		Appeared			Passed											
					Annual			Supplementary			Annual + Supplementary					
		Boys	Girls	Total	Boys	Girls	Total	Boys	Girls	Total	Boys	Girls	Total	Boys	Girls	Total
1	2	3	4	5	6	7	8	9	10	11	12	13	14	15	16	17
29	Tripura Board of Secondary Education	2784	2004	4788	1182	727	1909				1182	727	1909	42.5	36.3	39.9
30	Uttar Pradesh Board of High School & Intermediate Education	5833	3362	9195	4112	2909	7021				4112	2909	7021	70.5	86.5	76.4
31	Uttanchal Shiksha Evm Pariksha Parishad, Ramnagar	2015	1569	3584	1163	1192	2355				1163	1192	2355	57.7	76.0	65.7
32	West Bengal Council of Higher Education, Kolkata	9474	4420	13894	6280	2960	9240				6280	2960	9240	66.3	67.0	66.5
33	Board of Madarsa Education, West Bengal, Kolkata **															
Total		311957	204988	516945	191958	131905	323863	14792	9589	24381	206750	141494	348244	66.3	69.0	67.4

RESULTS OF HIGHER SECONDARY EXAMINATION- 2009

Table 10 -Annual and Supplementary Examination Results - Percentage-wise-All Categories

Sl. No.	Name of the Board	Total Number of Students Passed	Out of the Total, Number of Students passed with marks			Percentage of Students passed with marks		
			60% & above	50% to below 60%	Below 50%	60% & above	50% to below 60%	Below 50%
1	2	3	4	5	6	7	8	9
Central Boards								
1	Central Board of Secondary Education, New Delhi	531350	345218	131318	54814	65.0	24.7	10.3
2	Council for the Indian School Certificate Examinations, New Delhi	50670	46629	3103	938	92.0	6.1	1.9
State Boards								
3	Board of Intermediate Education, Andhra Pradesh	536618	333989	118984	83645	62.2	22.2	15.6
4	Assam Higher Secondary Education Council	113950	9691	25116	79143	8.5	22.0	69.5
5	Banasthali Vidyapith, Rajasthan	352	304	44	10	86.4	12.5	2.8
6	Bihar Intermediate Education Council	502248	220398	205969	75881	43.9	41.0	15.1
7	Bihar State Madarsa Education Board	36721	20581	15867	273	56.0	43.2	0.7
8	Chhattisgarh Board of Secondary Education	125632	Percentage-wise Results not maintained					
9	Chhattisgarh Madarsa Board, Chhattisgarh	66	Percentage-wise Results not maintained					
10	Chhattisgarh Sanskriti Vidya Mandalam	133	67	50	16	50.4	37.6	12.0
11	Goa Board of Secondary & Higher Secondary Education	8673	2835	3027	2811	32.7	34.9	32.4
12	Gujarat Secondary & Higher Secondary Education Board	370083	183899	99565	86619	49.7	26.9	23.4
13	Board of School Education Haryana, Bhiwani	199512	111385	71734	16393	55.8	36.0	8.2
14	H.P. Board of School Education, Dharamshala	72162	29972	30406	11784	41.5	42.1	16.3

RESULTS OF HIGHER SECONDARY EXAMINATION- 2009

Table 10 -Annual and Supplementary Examination Results - Percentage-wise-All Categories

Sl. No.	Name of the Board	Total Number of Students Passed	Out of the Total, Number of Students passed with marks			Percentage of Students passed with marks		
			60% & above	50% to below 60%	Below 50%	60% & above	50% to below 60%	Below 50%
1	2	3	4	5	6	7	8	9
15	J.K State Board of School Education	53797						
16	Jharkhand Academic Council, Ranchi	172251	19169	64802	88280	11.1	37.6	51.3
17	Department of Pre-University Education, Karnataka	320381	125141	84877	110363	39.1	26.5	34.4
18	Kerala Board of Higher Secondary Examination	294495	66767	63810	104450	22.7	21.7	35.5
19	Maharashtra State Board of Secondary & Higher Secondary Education	942182	346808	441108	154266	36.8	46.8	16.4
20	Board of Secondary Education, Madhya Pradesh	271410	107210	102283	61917	39.5	37.7	22.8
21	Council of Higher Secondary Education, Imphal, Manipur	13294	3842	5694	3758	28.9	42.8	28.3
22	Meghalaya Board of School Education	10785	1178	4247	5360	10.9	39.4	49.7
23	Mizoram Board of School Education	4306	467	1315	2524	10.8	30.5	58.6
24	Nagaland Board of School Education	8408	340	997	7071	4.0	11.9	84.1
25	Council of Higher Secondary Education, Orissa	149510	21839	42758	84913	14.6	28.6	56.8
26	Punjab School Education Board, Mohali	103937	Percentage-wise Results not awarded					
27	Board of Secondary Education, Rajasthan, Ajmer	381942	105315	187022	89605	27.6	49.0	23.5
28	Tamil Nadu State Board of School Examination	532290	383806	116288	32196	72.1	21.8	6.0

RESULTS OF HIGHER SECONDARY EXAMINATION- 2009

Table 10 -Annual and Supplementary Examination Results - Percentage-wise-All Categories

Sl. No.	Name of the Board	Total Number of Students Passed	Out of the Total, Number of Students passed with marks			Percentage of Students passed with marks		
			60% & above	50% to below 60%	Below 50%	60% & above	50% to below 60%	Below 50%
1	2	3	4	5	6	7	8	9
29	Tripura Board of Secondary Education	12083	596	2483	9004	4.9	20.5	74.5
30	Uttar Pradesh Board of High School & Intermediate Education	1639515	440630	686956	511929	26.9	41.9	31.2
31	Uttanchal Shiksha Evm Pariksha Parishad, Ramnagar	63537	4795	19402	39340	7.5	30.5	61.9
32	West Bengal Council of Higher Education, Kolkata	367141	111478	211145	44518	30.4	57.5	12.1
33	Board of Madarsa Education, West Bengal, Kolkata **	599	Percentage-wise Results not maintained					
Total		7890033						

RESULTS OF HIGHER SECONDARY EXAMINATION- 2009

Table 11 -Annual and Supplementary Examination Results - Percentage-wise-SC Students

Sl. No.	Name of the Board	Total Number of Students Passed	Out of the Total, Number of Students passed with marks			Percentage of Students passed with marks		
			60% & above	50% to below 60%	Below 50%	60% & above	50% to below 60%	Below 50%
1	2	3	4	5	6	7	8	9
Central Boards								
1	Central Board of Secondary Education, New Delhi	31794	15252	10324	6218	48.0	32.5	19.6
2	Council for the Indian School Certificate Examinations, New Delhi	939	805	106	28	85.7	11.3	3.0
State Boards								
3	Board of Intermediate Education, Andhra Pradesh	77419	34373	15188	27858	44.4	19.6	36.0
4	Assam Higher Secondary Education Council	7958	Percentage-wise Results not maintained for this category					
5	Banasthali Vidyapith, Rajasthan	11	9	2		81.8	18.2	
6	Bihar Intermediate Education Council	42756	14104	18972	9680	33.0	44.4	22.6
7	Bihar State Madarsa Education Board							
8	Chhattisgarh Board of Secondary Education	16207	Percentage-wise Results not maintained					
9	Chhatisgarh Madarsa Board, Chhatisgarh							
10	Chhatisgarh Sanskriti Vidya Mandalam							
11	Goa Board of Secondary & Higher Secondary Education	86	18	37	31	20.9	43.0	36.0
12	Gujarat Secondary & Higher Secondary Education Board	28589	12424	8251	7914	43.5	28.9	27.7
13	Board of School Education Haryana, Bhiwani	27504	11917	12237	3350	43.3	44.5	12.2
14	H.P. Board of School Education, Dharamshala	14045	4171	5730	4144	29.7	40.8	29.5

RESULTS OF HIGHER SECONDARY EXAMINATION- 2009

Table 11 -Annual and Supplementary Examination Results - Percentage-wise-SC Students

Sl. No.	Name of the Board	Total Number of Students Passed	Out of the Total, Number of Students passed with marks			Percentage of Students passed with marks		
			60% & above	50% to below 60%	Below 50%	60% & above	50% to below 60%	Below 50%
1	2	3	4	5	6	7	8	9
15	J.K State Board of School Education							
16	Jharkhand Academic Council, Ranchi	12746	1052	5214	6480	8.3	40.9	50.8
17	Department of Pre-University Education, Karnataka	44832	13139	12294	19399	29.3	27.4	43.3
18	Kerala Board of Higher Secondary Examination	19543	1970	3600	13973	10.1	18.4	71.5
19	Maharashtra State Board of Secondary & Higher Secondary Education	127010	36710	64216	26084	28.9	50.6	20.5
20	Board of Secondary Education, Madhya Pradesh	34959	11374	14295	9290	32.5	40.9	26.6
21	Council of Higher Secondary Education, Imphal, Manipur	432	143	207	82	33.1	47.9	19.0
22	Meghalaya Board of School Education	116	25	40	51	21.6	34.5	44.0
23	Mizoram Board of School Education	20	2	3	15	10.0	15.0	75.0
24	Nagaland Board of School Education	105	6	32	67	5.7	30.5	63.8
25	Council of Higher Secondary Education, Orissa	14885	1087	3635	10163	7.3	24.4	68.3
26	Punjab School Education Board, Mohali	20281	Percentage-wise Results not awarded					
27	Board of Secondary Education, Rajasthan, Ajmer	47251	18690	19758	8803	39.6	41.8	18.6
28	Tamil Nadu State Board of School Examination	100240	59917	29945	10378	59.8	29.9	10.4

RESULTS OF HIGHER SECONDARY EXAMINATION- 2009

Table 11 -Annual and Supplementary Examination Results - Percentage-wise-SC Students

Sl. No.	Name of the Board	Total Number of Students Passed	Out of the Total, Number of Students passed with marks			Percentage of Students passed with marks		
			60% & above	50% to below 60%	Below 50%	60% & above	50% to below 60%	Below 50%
1	2	3	4	5	6	7	8	9
29	Tripura Board of Secondary Education	2139	68	400	1671	3.2	18.7	78.1
30	Uttar Pradesh Board of High School & Intermediate Education	253797	53637	108912	91248	21.1	42.9	36.0
31	Uttranchal Shiksha Evm Pariksha Parishad, Ramnagar	8797	424	2410	5963	4.8	27.4	67.8
32	West Bengal Council of Higher Education, Kolkata	65552	13643	30374	21535	20.8	46.3	32.9
33	Board of Madarsa Education, West Bengal, Kolkata **							
Total		1000013						

RESULTS OF HIGHER SECONDARY EXAMINATION- 2009

Table 12 -Annual and Supplementary Examination Results - Percentage-wise-ST Students

Sl. No.	Name of the Board	Total Number of Students Passed	Out of the Total, Number of Students passed with marks			Percentage of Students passed with marks		
			60% & above	50% to below 60%	Below 50%	60% & above	50% to below 60%	Below 50%
1	2	3	4	5	6	7	8	9
Central Boards								
1	Central Board of Secondary Education, New Delhi	13494	6027	4117	3350	44.7	30.5	24.8
2	Council for the Indian School Certificate Examinations, New Delhi	1353	1151	171	31	85.1	12.6	2.3
State Boards								
3	Board of Intermediate Education, Andhra Pradesh	27138	11011	8572	7555	40.6	31.6	27.8
4	Assam Higher Secondary Education Council	10712	Percentage-wise Results not maintained for this category					
5	Banasthali Vidyapith, Rajasthan	18	12	6		66.7	33.3	
6	Bihar Intermediate Education Council	5309	1832	2362	1115	34.5	44.5	21.0
7	Bihar State Madarsa Education Board							
8	Chhattisgarh Board of Secondary Education	27466	Percentage-wise Results not maintained					
9	Chhatisgarh Madarsa Board, Chhatisgarh							
10	Chhatisgarh Sanskriti Vidya Mandalam	78	21	30	27	26.9	38.5	34.6
11	Goa Board of Secondary & Higher Secondary Education	366	79	144	143	21.6	39.3	39.1
12	Gujarat Secondary & Higher Secondary Education Board	38685	15899	12916	9870	41.1	33.4	25.5
13	Board of School Education Haryana, Bhiwani	71	42	27	2	59.2	38.0	2.8
14	H.P. Board of School Education, Dharamshala	3814	1021	1552	1241	26.8	40.7	32.5

RESULTS OF HIGHER SECONDARY EXAMINATION- 2009

Table 12 -Annual and Supplementary Examination Results - Percentage-wise-ST Students

Sl. No.	Name of the Board	Total Number of Students Passed	Out of the Total, Number of Students passed with marks			Percentage of Students passed with marks		
			60% & above	50% to below 60%	Below 50%	60% & above	50% to below 60%	Below 50%
1	2	3	4	5	6	7	8	9
15	J.K State Board of School Education							
16	Jharkhand Academic Council, Ranchi	35204	3152	13163	18889	9.0	37.4	53.7
17	Department of Pre-University Education, Karnataka	14553	4608	3988	5957	31.7	27.4	40.9
18	Kerala Board of Higher Secondary Examination	2233	137	364	1008	6.1	16.3	45.1
19	Maharashtra State Board of Secondary & Higher Secondary Education	46860	12274	24823	9763	26.2	53.0	20.8
20	Board of Secondary Education, Madhya Pradesh	21854	5601	9486	6767	25.6	43.4	31.0
21	Council of Higher Secondary Education, Imphal, Manipur	5473	1354	2330	1789	24.7	42.6	32.7
22	Meghalaya Board of School Education	9401	889	3660	4852	9.5	38.9	51.6
23	Mizoram Board of School Education	4219	535	1389	2295	12.7	32.9	54.4
24	Nagaland Board of School Education	7674	412	876	6386	5.4	11.4	83.2
25	Council of Higher Secondary Education, Orissa	14595	514	3122	10959	3.5	21.4	75.1
26	Punjab School Education Board, Mohali	51	Percentage-wise Results not awarded					
27	Board of Secondary Education, Rajasthan, Ajmer	34365	12664	14365	7336	36.9	41.8	21.3
28	Tamil Nadu State Board of School Examination	2733	1436	945	352	52.5	34.6	12.9

RESULTS OF HIGHER SECONDARY EXAMINATION- 2009

Table 12 -Annual and Supplementary Examination Results - Percentage-wise-ST Students

Sl. No.	Name of the Board	Total Number of Students Passed	Out of the Total, Number of Students passed with marks			Percentage of Students passed with marks		
			60% & above	50% to below 60%	Below 50%	60% & above	50% to below 60%	Below 50%
1	2	3	4	5	6	7	8	9
29	Tripura Board of Secondary Education	1909	17	202	1690	0.9	10.6	88.5
30	Uttar Pradesh Board of High School & Intermediate Education	7021	1587	3024	2410	22.6	43.1	34.3
31	Uttanchal Shiksha Evm Pariksha Parishad, Ramnagar	2355	96	490	1769	4.1	20.8	75.1
32	West Bengal Council of Higher Education, Kolkata	9240	1051	3059	5130	11.4	33.1	55.5
33	Board of Madarsa Education, West Bengal, Kolkata **							
Total		348244						

RESULTS OF HIGHER SECONDARY EXAMINATION- 2009

Table 13 - Higher Secondary Open School Examination Board Results

Sl. No.	Name of the Board	Number of Students																	
		All Categories						Scheduled Caste						Scheduled Tribe					
		Appeared			Passed			Appeared			Passed			Appeared			Passed		
		Boys	Girls	Total	Boys	Girls	Total	Boys	Girls	Total	Boys	Girls	Total	Boys	Girls	Total	Boys	Girls	Total
1	2	3	4	5	6	7	8	9	10	11	12	13	14	15	16	17	18	19	20
1	National Institute of Open Schooling, New Delhi	225013	92557	317570	79200	35693	114893	28834	9482	38316	8871	3313	12184	8873	8590	17463	3171	3199	6370
2	Chattisgarh State Open School	4612	3557	8169	2784	2368	5152	536	431	967	315	276	591	1297	990	2287	733	600	1333
3	Madhya Pradesh State Open School Board of Secondary Education	19439	13237	32676	15269	13386	28655	2062	2064	4126	1640	1440	3080	2008	1739	3747	1509	1236	2745
4	Rajasthan State Open School, Rajasthan	4693	4594	9287	1572	1803	3375	716	655	1371	223	247	470	614	380	994	203	121	324
5	Rabindra Mukta Vidyalaya (West Bengal State Open School)	4247	3865	8112	1247	1281	2528	803	628	1431	249	197	446	333	330	663	60	90	150
Total		258004	117810	375814	100072	54531	154603	32951	13260	46211	11298	5473	16771	13125	12029	25154	5676	5246	10922

Note: In Open Schooling System, candidates are not classified as 'Regular' or 'Private'.

RESULTS OF HIGHER SECONDARY EXAMINATION- 2009

Table 14 -Open School Examination Board Results - Percentage-wise-All Categories

Sl. No.	Name of the Board	Total Number of Students Passed	Out of the Total, Number of Students passed with marks			Percentage of Students passed with marks		
			60% & above	50% to below 60%	Below 50%	60% & above	50% to below 60%	Below 50%
1	2	3	4	5	6	7	8	9
1	National Institute of Open Schooling, New Delhi	114893	18402	35952	60539	16.0	31.3	52.7
2	Chattisgarh State Open School	5152	156	1122	3874	3.0	21.8	75.2
3	Madhya Pradesh State Open School Board of Secondary Education	28655	5818	12886	9951	20.3	45.0	34.7
4	Rajasthan State Open School, Rajasthan	3375	GRADING SYSTEM					
5	Rabindra Mukta Vidyalaya (West Bengal State Open School)	2528	85	702	1741	3.4	27.8	68.9
Total		154603						

RESULTS OF HIGHER SECONDARY EXAMINATION- 2009

Table 15 -Open School Examination Board Results - Percentage-wise-SC Students

Sl. No.	Name of the Board	Total Number of Students Passed	Out of the Total, Number of Students passed with marks			Percentage of Students passed with marks		
			60% & above	50% to below 60%	Below 50%	60% & above	50% to below 60%	Below 50%
1	2	3	4	5	6	7	8	9
1	National Institute of Open Schooling, New Delhi	12184	1221	3099	7864	10.0	25.4	64.5
2	Chattisgarh State Open School	591	17	117	457	2.9	19.8	77.3
3	Madhya Pradesh State Open School Board of Secondary Education	3080	490	1417	1173	15.9	46.0	38.1
4	Rajasthan State Open School, Rajasthan	470	GRADING SYSTEM					
5	Rabindra Mukta Vidyalaya (West Bengal State Open School)	446	7	108	331	1.6	24.2	74.2
Total		16771						

RESULTS OF HIGHER SECONDARY EXAMINATION- 2009

Table 16 -Open School Examination Board Results - Percentage-wise-ST Students

Sl. No.	Name of the Board	Total Number of Students Passed	Out of the Total, Number of Students passed with marks			Percentage of Students passed with marks		
			60% & above	50% to below 60%	Below 50%	60% & above	50% to below 60%	Below 50%
1	2	3	4	5	6	7	8	9
1	National Institute of Open Schooling, New Delhi	6370	531	1841	3998	8.3	28.9	62.8
2	Chattisgarh State Open School	1333	34	225	1074	2.6	16.9	80.6
3	Madhya Pradesh State Open School Board of Secondary Education	2745	364	1295	1086	13.3	47.2	39.6
4	Rajasthan State Open School, Rajasthan	324	GRADING SYSTEM					
5	Rabindra Mukta Vidyalaya (West Bengal State Open School)	150	8	18	124	5.3	12.0	82.7
Total		10922						

Statement 1 - HIGHER SECONDARY EXAMINATION RESULTS DURING 2005 - 2009

Year	Number of Students																	
	All Categories						Scheduled Caste						Scheduled Tribe					
	Appeared			Passed			Appeared			Passed			Appeared			Passed		
	Boys	Girls	Total	Boys	Girls	Total	Boys	Girls	Total	Boys	Girls	Total	Boys	Girls	Total	Boys	Girls	Total
2005	4423634	3104976	7528610	3007558	2376341	5383899	627962	388482	1016444	368230	249018	617248	228249	120526	348775	124092	75989	200081
2006	5020748	3412045	8432793	3507082	2624376	6131458	735321	441370	1176691	465185	306969	772154	244078	139102	383180	139939	88276	228215
2007	5186501	3681654	8868155	3666845	2899333	6566178	714190	456873	1171063	474507	333173	807680	261005	161028	422033	152994	102083	255077
2008	5652764	4116807	9769571	3863721	3271583	7135304	818129	542735	1360864	493367	378824	872191	315632	199898	515530	192337	130247	322584
2009	6116582	4435289	10551871	4466627	3578009	8044636	867146	597093	1464239	575460	441324	1016784	325082	217017	542099	212426	146740	359166

Statement 2 - HIGHER SECONDARY EXAMINATION PASS PERCENTAGE DURING 2005 - 2009

Year	All Categories			Scheduled Caste			Scheduled Tribe		
	Boys	Girls	Total	Boys	Girls	Total	Boys	Girls	Total
2005	68.0	76.5	71.5	58.6	64.1	60.7	54.4	63.0	57.4
2006	69.9	76.9	72.7	63.3	69.5	65.6	57.3	63.5	59.6
2007	70.7	78.8	74.0	66.4	72.9	69.0	58.6	63.4	60.4
2008	68.4	79.5	73.0	60.3	69.8	64.1	60.9	65.2	62.6
2009	73.0	80.7	76.2	66.4	73.9	69.4	65.3	67.6	66.3

Statement 3 - Students movement from Class X onwards

Year	Number of Students														
	I Passed in Class X			II Enrolled in Class XI			III Enrolled in Class XII			IV Appeared in Class XII			V Passed in Class XII		
	Boys	Girls	Total	Boys	Girls	Total	Boys	Girls	Total	Boys	Girls	Total	Boys	Girls	Total
2005	4964179	3645676	8609855	4084952	2959640	7044592									
2006	5428736	4079333	9508069	4319210	3206395	7525605	3738821	2775982	6514803						
2007	5798647	4546040	10344687	4899935	3706327	8606262	4358196	3293321	7651517	5186501	3681654	8868155	3666845	2899333	6566178
2008							4429693	3409234	7838927	5652764	4116807	9769571	3863721	3271583	7135304
2009										6116582	4435289	10551871	4466627	3578009	8044636